

Improving Public Health In California Through Climate Change Strategies

CARB Meeting July 13, 2018

Solange Gould, DrPH, MPH
Chief, Health Equity Policy and Planning Unit

Jason Vargo, PhD, MPH, MCRP
Lead Research Scientist, Climate Change & Health Equity Program



California Department of Public Health



Climate Change and Health Equity Program

Today's Presentation Summary

- **Health inequities in California**
- **Health is determined primarily by social determinants of health:**
 - Living conditions—physical, social, economic, and services. (e.g., income/jobs, housing, transportation, discrimination, decision-making power).
- **Main causes of death in California are from chronic diseases, which can be mitigated by climate strategies that prioritize physical activity and healthy food.**
- **All climate change policies will have some impact on these social determinants of health, and represent a significant opportunity to improve population health and health inequities.**

Health Inequities



STOCKTON
95202
Life Expectancy
73

IRVINE
92606
Life Expectancy
88

Social Determinants of Health



Social Determinants of Health



California's Burden of Premature Death

CHRONIC DISEASES

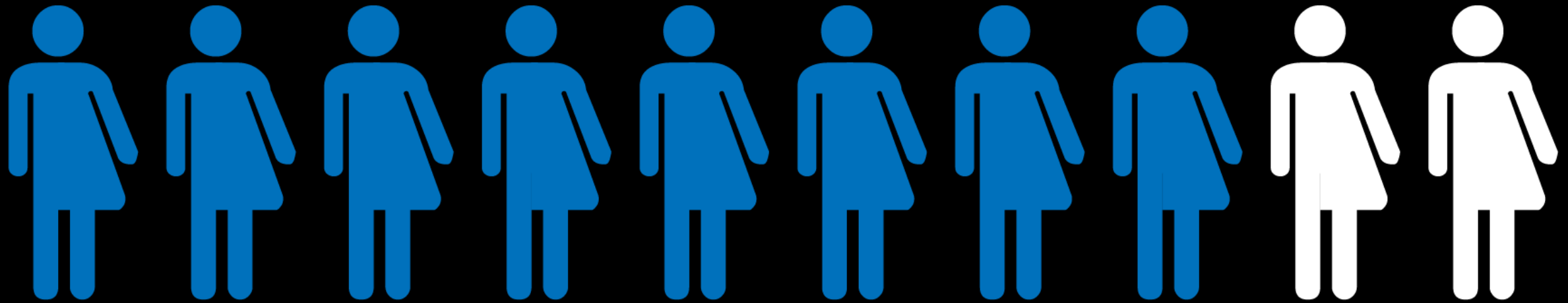
**COMMUN-
ICABLE
DISEASE**

INJURIES

California's Burden of Premature Death

<u>Rank</u>	<u>%YLL*</u>
1. Ischemic heart disease	15.0%
2. Lung cancer	5.6%
3. Cerebrovascular disease	4.6%
4. COPD	4.0%
5. Alzheimer disease	3.9%
6. Self-harm	3.8%
7. Road injuries	3.8%
8. Drug use disorders	3.2%
9. Colorectal cancer	3.0%
10. Diabetes	2.5%

8 out of 10 deaths in California are due to chronic diseases like heart disease, stroke, cancer, type 2 diabetes, obesity and chronic respiratory ailments.



6

conditions

**arthritis
asthma
cardiovascular dis.
diabetes
cancer
depression**

=

42

percent

**of all
healthcare
expenditures**

=

98

billion dollars

**annually
in treatment
costs for
California**

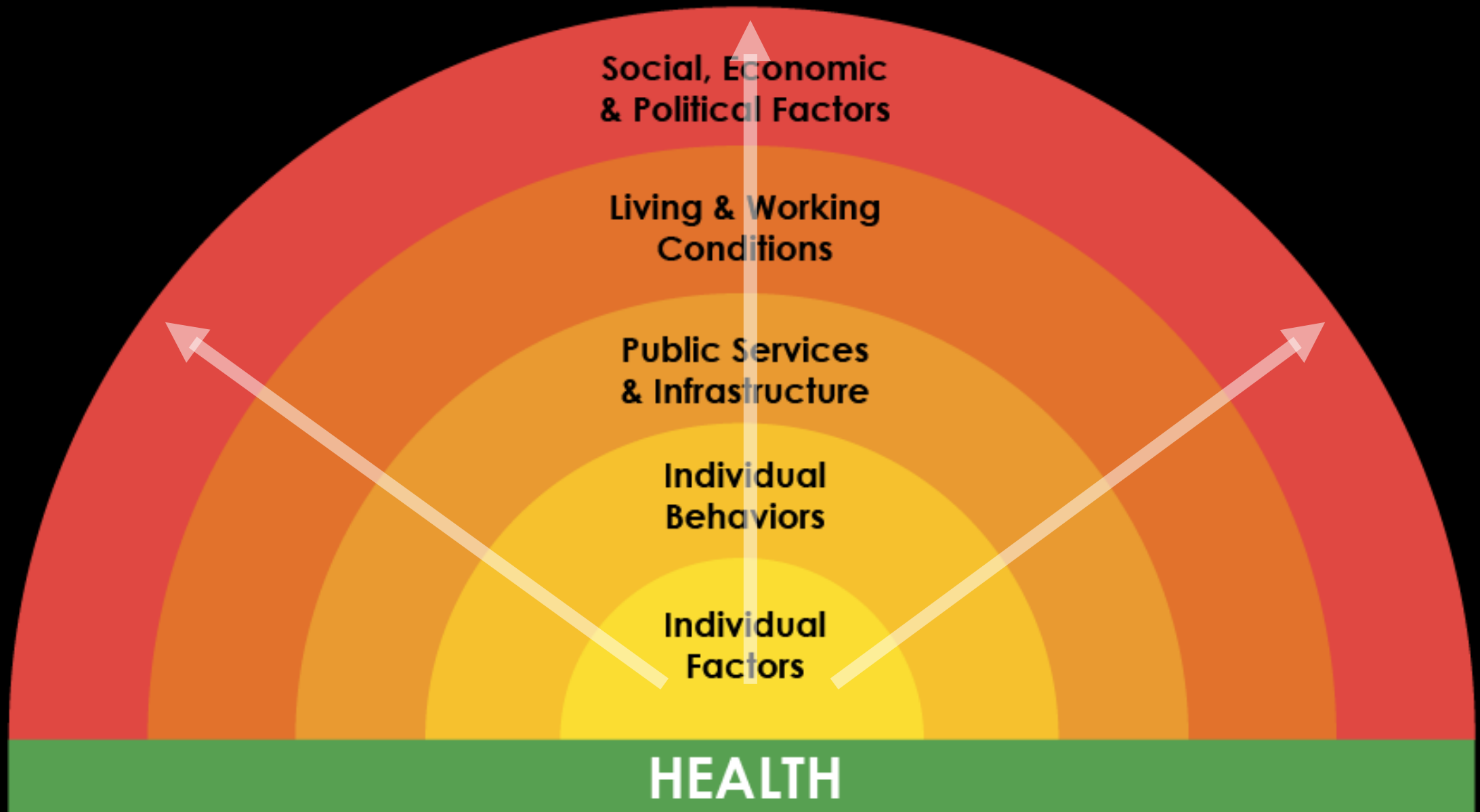
Risk Factors for California Premature Death

<u>Rank</u>	<u>% YLL*</u>
1. High body mass index	13.7%
2. Smoking	13.1%
3. High blood pressure	12.9%
4. High blood sugar	9.8%
5. High cholesterol	7.1%
6. Alcohol use	6.9%
7. Drug use	5.8%
8. Diet low in whole grains	4.7%
9. Impaired kidney function	4.3%
10. Diet high in sodium	3.6%
11. Ambient PM air pollution	3.3%



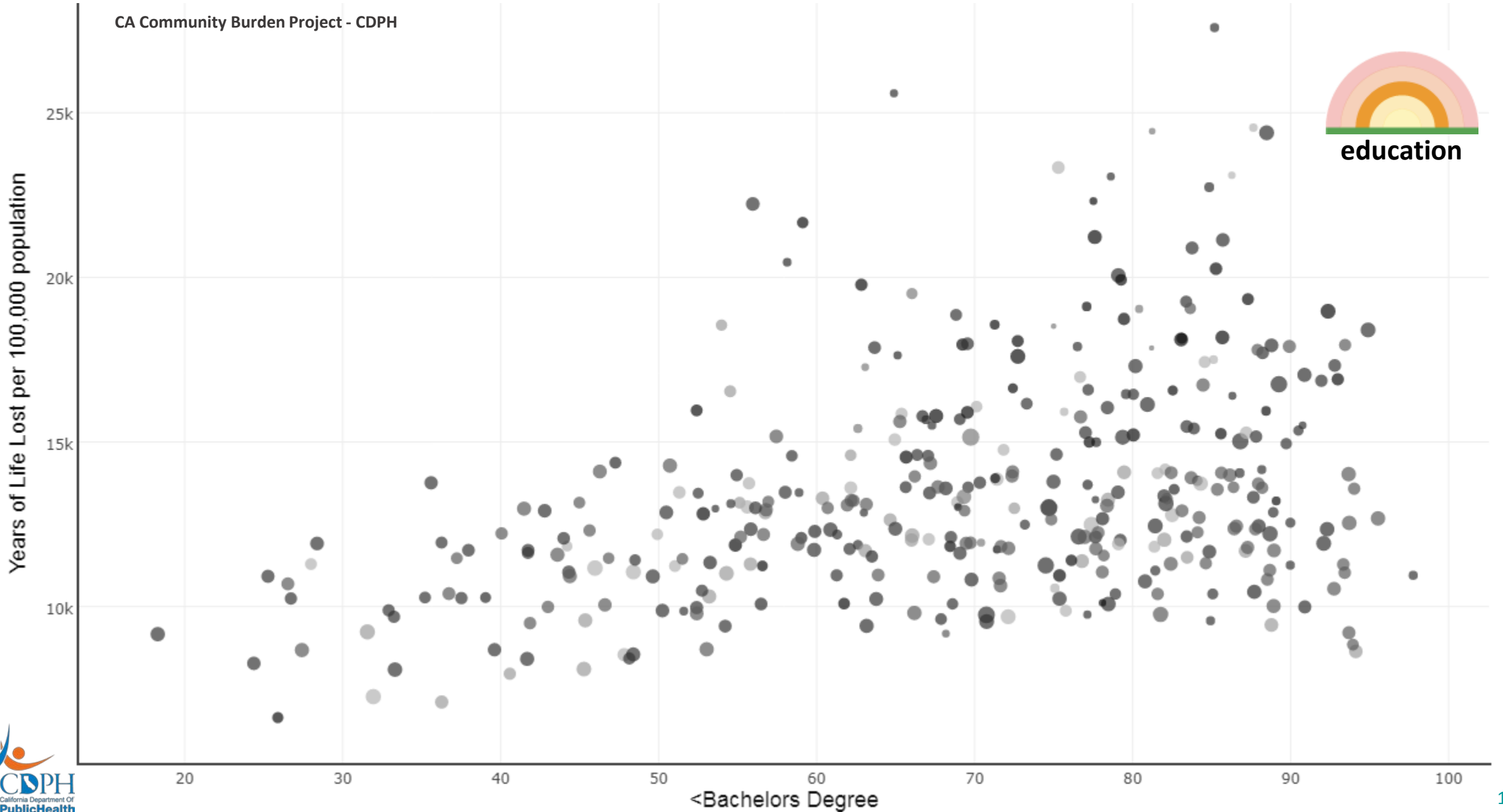
behaviors

Social Determinants of Health



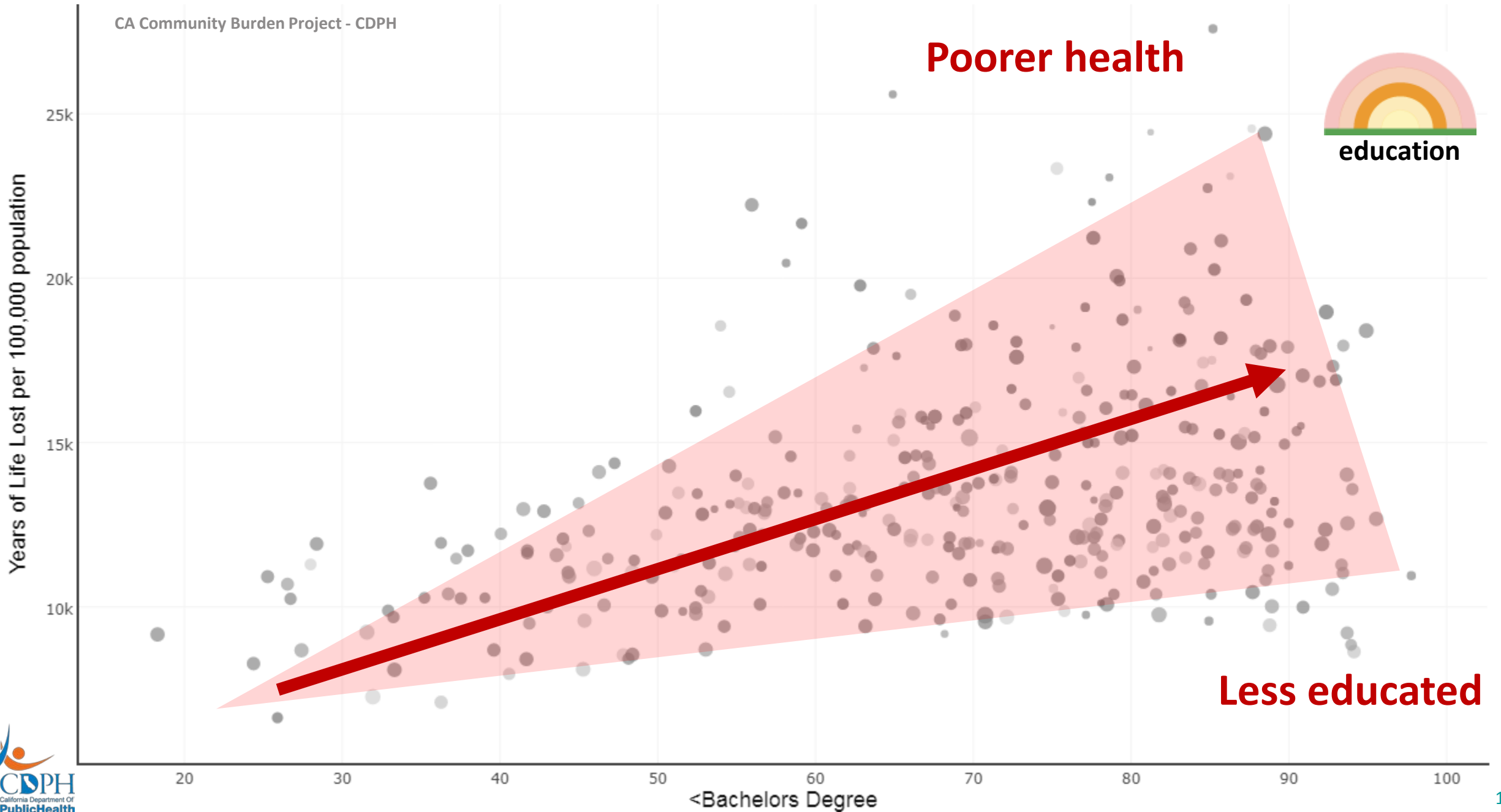
Association of Educational Attainment and Premature Death in California Communities (2015)

CA Community Burden Project - CDPH



Association of Educational Attainment and Premature Death in California Communities (2015)

CA Community Burden Project - CDPH



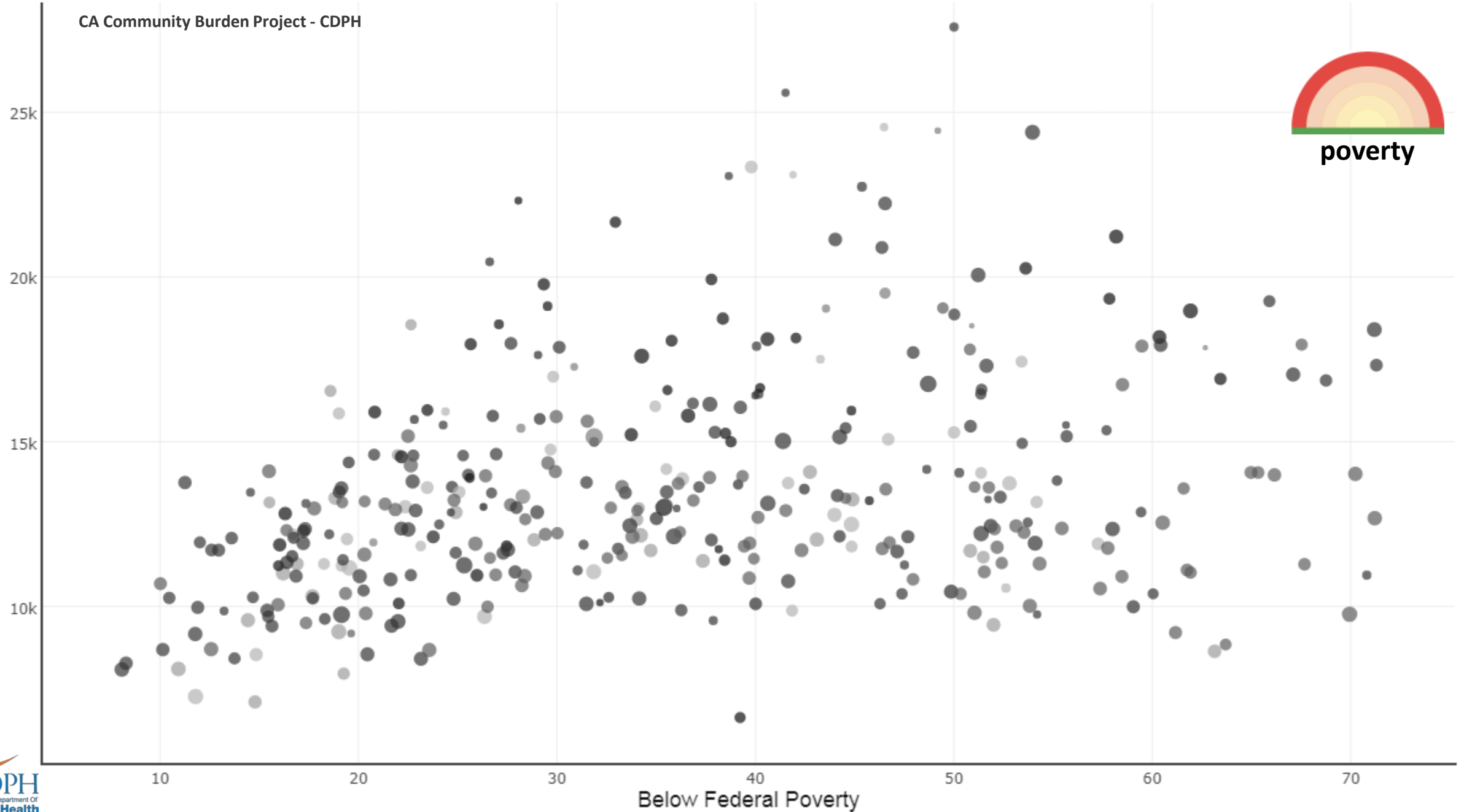
Association of Poverty and Premature Death in California Communities (2015)

CA Community Burden Project - CDPH



poverty

Years of Life Lost per 100,000 population



Association of Poverty and Premature Death in California Communities (2015)

CA Community Burden Project - CDPH



Years of Life Lost per 100,000 population

Better health

10k

15k

20k

25k

More economic security

Below Federal Poverty

10

20

30

40

50

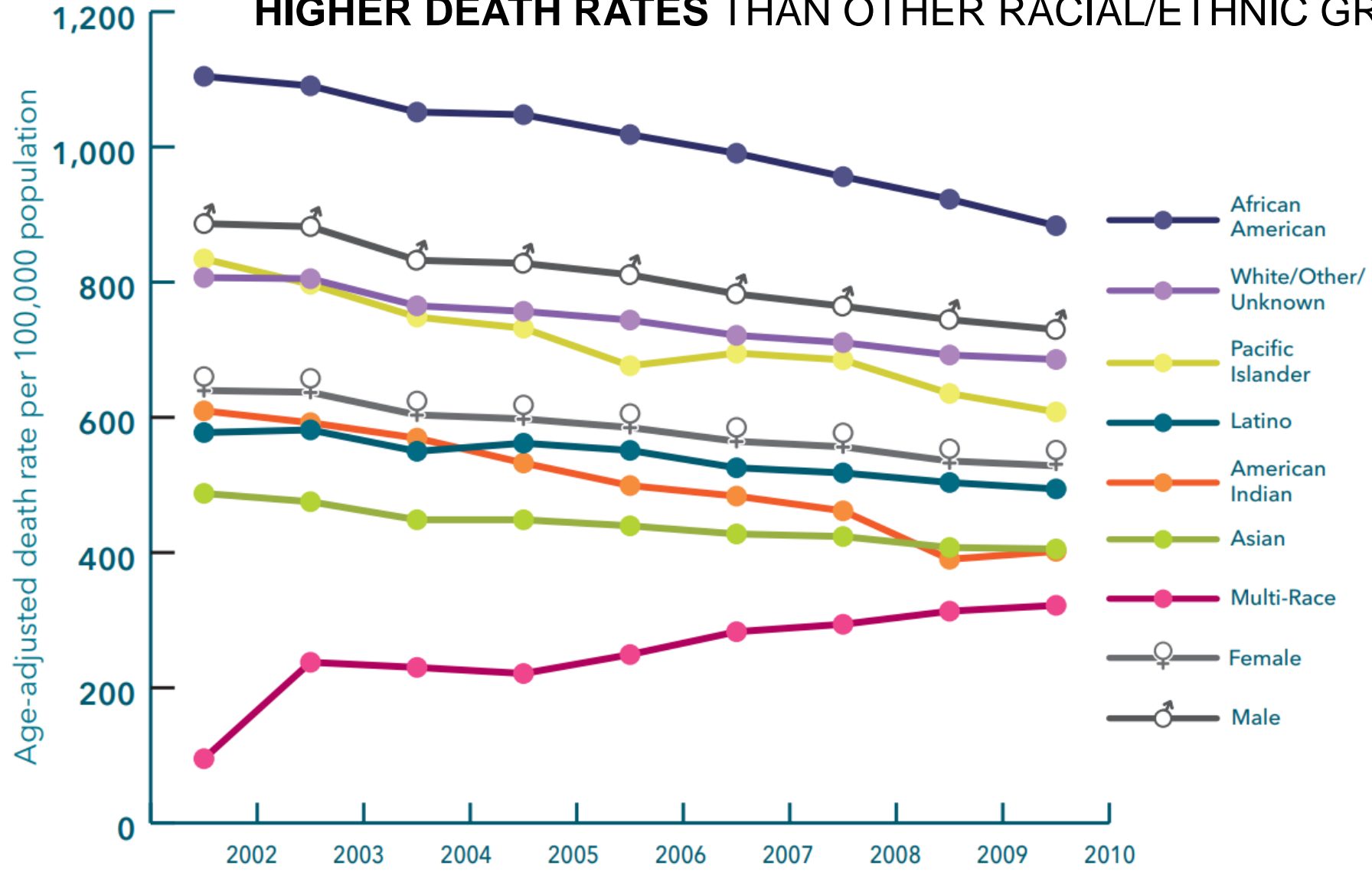
60

70

ALTHOUGH DEATH RATES IN CALIFORNIA HAVE DECLINED, DISPARITIES PERSIST, WITH **AFRICAN AMERICANS HAVING HIGHER DEATH RATES** THAN OTHER RACIAL/ETHNIC GROUPS

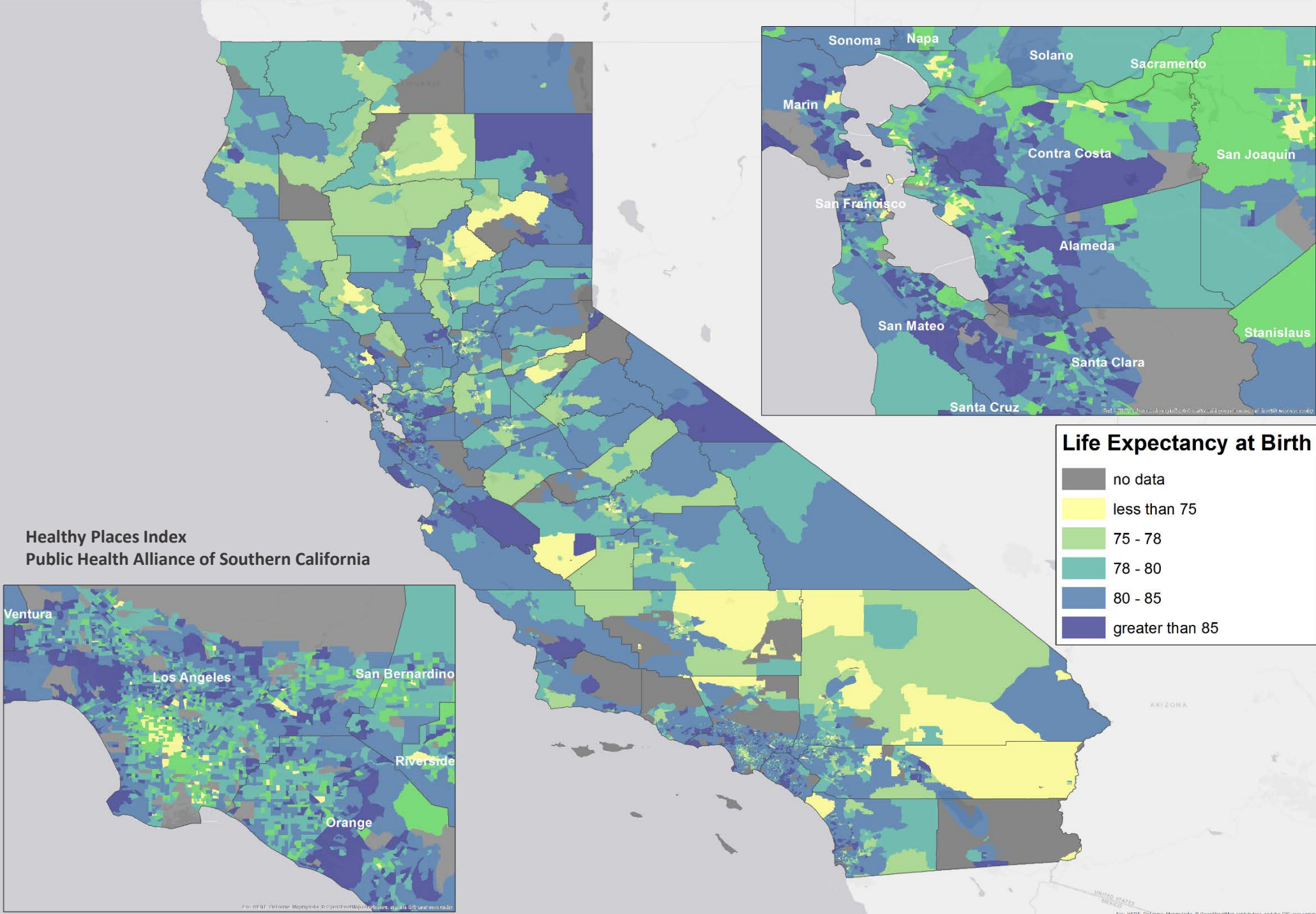


race

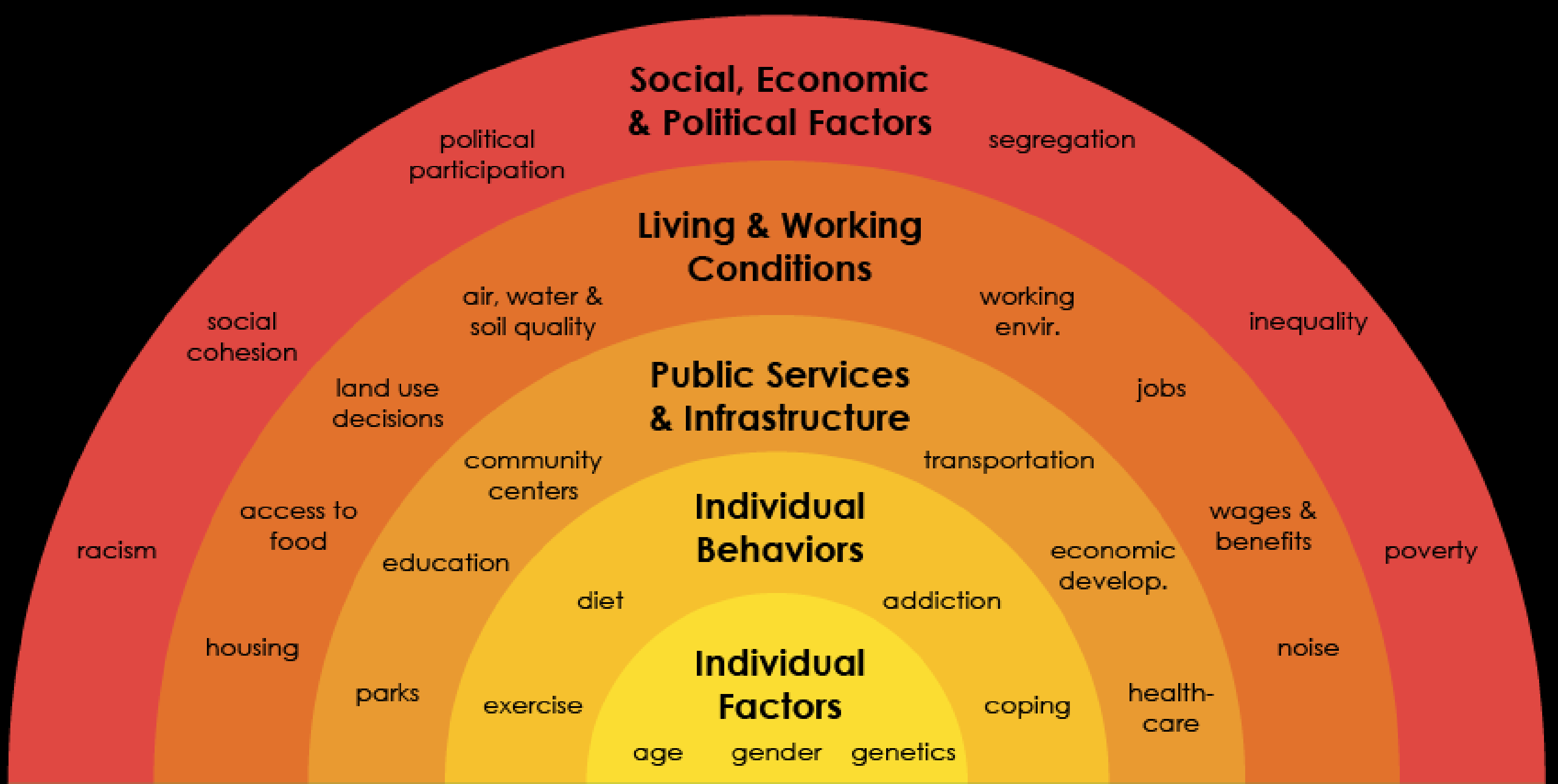




living conditions



Healthy Places Index
Public Health Alliance of Southern California



CLIMATE STRATEGIES & HEALTH

**Social, Economic
& Political Factors**

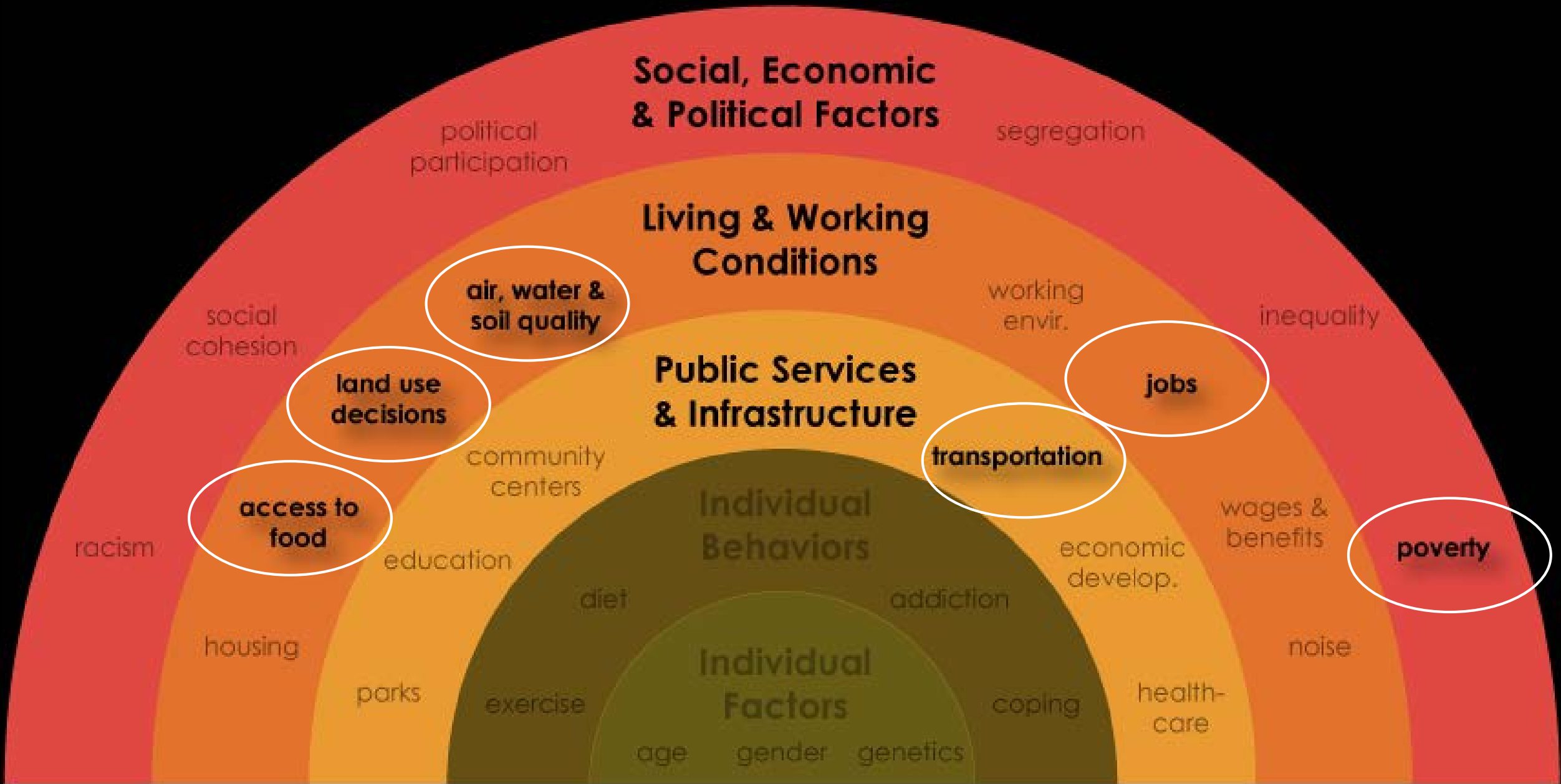
**Living & Working
Conditions**

**Public Services
& Infrastructure**

Individual
Behaviors

Individual
Factors

PRIORITIZE UPSTREAM DRIVERS OF HEALTH



PRIORITIZE ACTIVITIES WITH MULTIPLE BENEFITS

Thank you!

Solange Gould, DrPH, MPH
Chief, Health Equity Policy and Planning Unit
Solange.Gould@cdph.ca.gov

Jason Vargo, PhD, MPH, MCRP
Lead Research Scientist, Climate Change & Health Equity Program
Jason.Vargo@cdph.ca.gov



California Department of Public Health



Climate Change and Health Equity Program