



# Community Meeting

---

## Study of Neighborhood Air near Petroleum Sources (SNAPS)

JULY 9, 2019

KNOX PRESBYTERIAN CHURCH

# Outline



Introduction and Motivation

Scope of Work

Monitoring Equipment

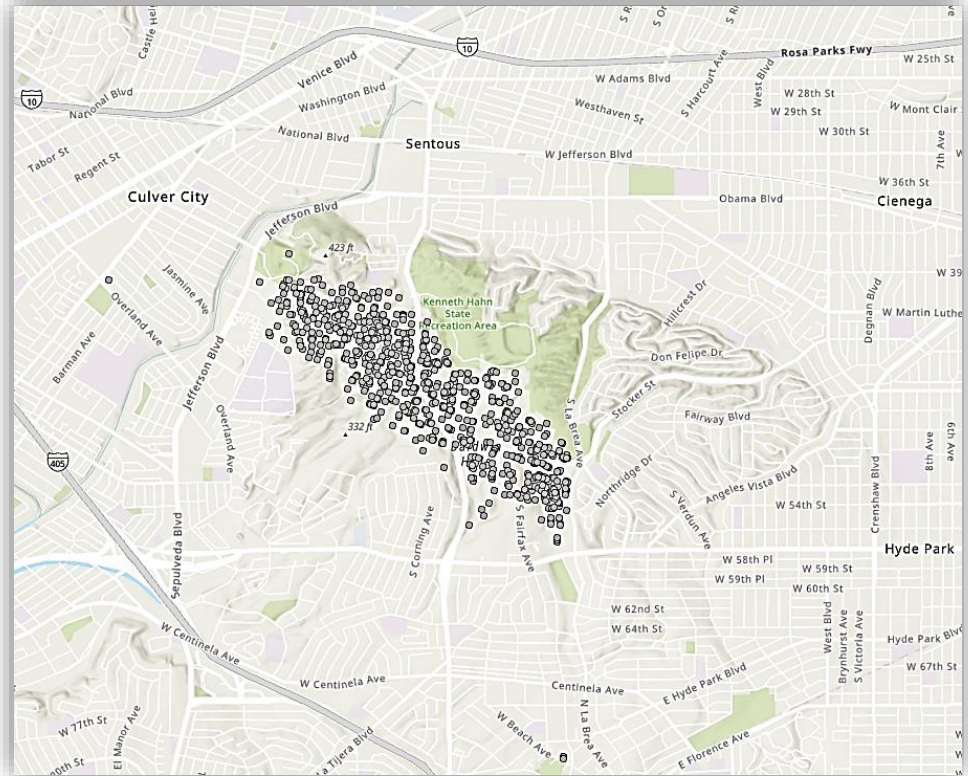
Potential Monitoring Sites

Next Steps

Q&A

# What is SNAPS?

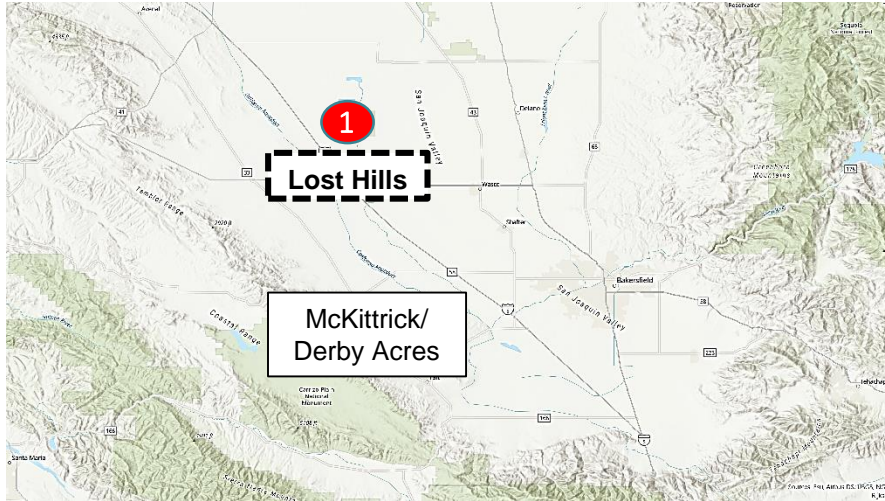
**S**tudy  
of  
**N**eighborhood  
**A**ir  
near  
**P**etroleum  
**S**ources



# Motivation for SNAPS

- Exposure concerns raised by communities
- Aliso Canyon underground natural gas storage leak
- California Council on Science and Technology (CCST) recommendations
- Part of broader CARB effort to understand impacts of oil and gas operations

# First Round Communities



# SNAPS Scope

## Program Goals

Characterize air quality  
in communities near oil  
and gas operations

Identify pollution  
sources as feasible

Analyze data for  
possible health risks

## Major Pollutants

Toxic Air Contaminants (TACs)

Volatile Organic Compounds (VOCs)

Criteria (Smog Forming) Pollutants  
(particulate matter, carbon monoxide,  
sulfur dioxide, ozone)

Metals

Glycols

Hydrogen  
Sulfide

Methane



# Stationary Trailer



- Limited-term, intensive air pollutant monitoring
- State-of-the-art instrumentation
- Capability to monitor over 200 pollutants



# Mobile Monitoring Vehicle

Community and near-source air pollutant screening  
Provide measurements as needed away from trailer  
Can be used to supplement trailer monitoring

Pollutants:

Methane

Carbon dioxide/monoxide

Hydrogen Sulfide

BTEX

Speciated VOCs





# Communicating Results

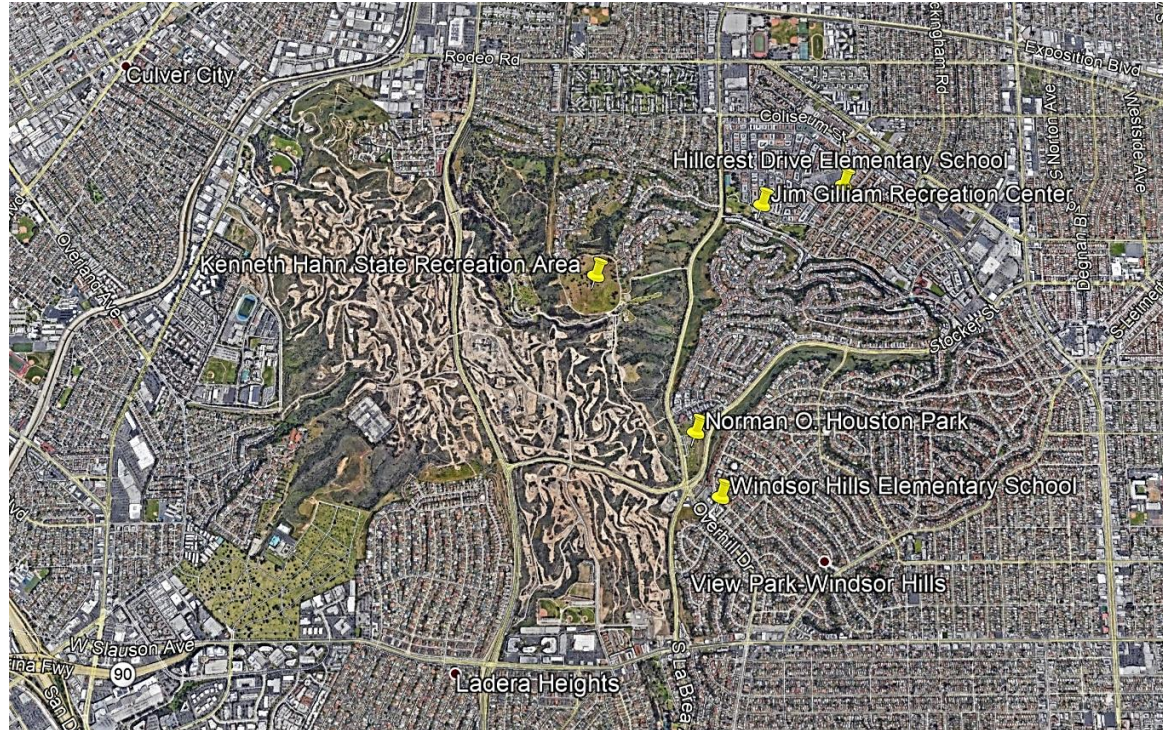
Response Tier	Pollutant/criteria	Time to Public Posting of Data	Agencies included in analysis	Agencies notified if Standards are Exceeded
Tier I Data collected in real time	CH <sub>4</sub> , H <sub>2</sub> S, O <sub>3</sub> , CO, Black Carbon, PM <sub>2.5</sub>	Hourly <sup>(1)</sup>	CARB OEHHA	Air districts
Tier II All other data	Toxic air contaminants (TACs), non-TAC VOCs and metals	With published study <sup>(2)</sup>	CARB OEHHA	Air districts CalEPA

Note: If data show potential for immediate health impact, CARB and OEHHA will notify CalOES immediately. If preliminary data show potential levels of concern, CARB and OEHHA will evaluate and inform districts and communities as appropriate.

(1) Results streamed hourly on [project website](#).

(2) Study will be published as quickly as possible.

# Prospective Monitoring Sites





# Prospective Monitoring Sites

## KENNETH HAHN STATE RECREATION AREA



## WINDSOR HILLS ELEMENTARY SCHOOL

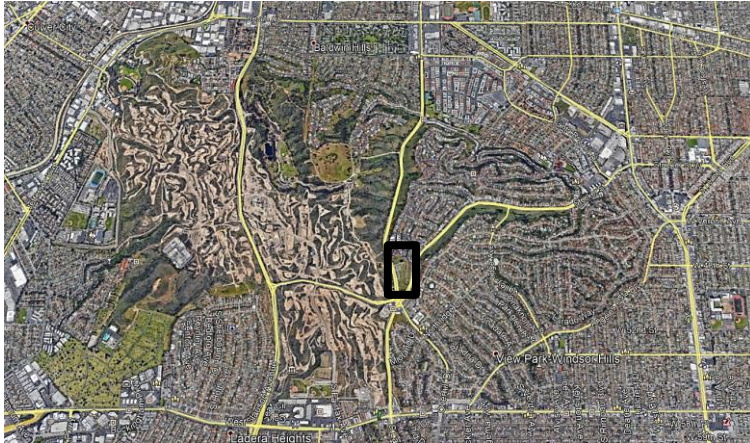


- <math><1/8</math> mile downwind of Inglewood Oil Field
- Downwind of gas plant and La Cienega Blvd

- 1/4 mile downwind of Inglewood Oil Field
- Close proximity to La Brea Ave, Stocker St

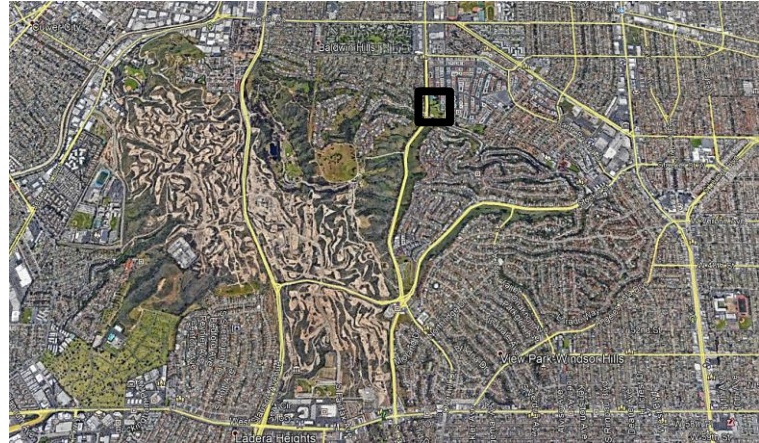
# Prospective Monitoring Sites

## NORMAN O. HOUSTON PARK



- 1/8 mile downwind of Inglewood Oil Field
- Close proximity to La Brea Ave, Stocker St

## JIM GILLIAM PARK AND RECREATION CENTER



- 1 mile downwind of Inglewood Oil Field
- Adjacent to La Brea Ave



# Prospective Monitoring Sites

HILLCREST DRIVE  
ELEMENTARY SCHOOL

**SUGGESTIONS?**



- 1 1/3 miles downwind of Inglewood Oil Field
- Close proximity to W Martin Luther King Jr Blvd

**CARB is looking for input from the community.  
Are there other locations we should consider?**



# What are the next steps?

## Future Community Meetings

- Air monitoring kickoff meeting
- Mid-monitoring meeting
- Final report meeting

## Data Analysis and Final Report

- CARB
- OEHHA
- Final report community meeting
  - Discuss results and conclusions
  - Explore follow-up measures and broader solutions, as appropriate



# OEHHA Evaluation of Potential Health Risks



Compare short- and longer-term exposure levels to health-based guidance values

*Acute, 8-hour, chronic Reference Exposure Levels (RELs)*

*Cancer potencies*

Characterize potential health risks

Follow up on measured chemicals without existing guidance levels

# What are the next steps? (cont.)



If elevated concentrations found:

Attempt to determine the source

Coordinate with SCAQMD and DOGGR

Work with operators and industry to pursue solutions

Explore broader solutions, as appropriate

# Resources and Contact Information

- Project webpage  
<https://ww2.arb.ca.gov/our-work/programs/study-neighborhood-air-near-petroleum-sources>
- Visit project webpage to Subscribe and receive email updates
- Email us at [SNAPS@arb.ca.gov](mailto:SNAPS@arb.ca.gov) or call contacts below:

## Events & General Project Questions

Carolyn Lozo, Chief  
Oil and Gas and Greenhouse Gas Mitigation Branch  
California Air Resources Board  
(916) 445-1104

## Air Monitoring Technical Questions

Walter Ham, Manager  
Advanced Monitoring Techniques Section  
California Air Resources Board  
(916) 322-8116