

San Joaquin Valley Communities
Recommended for Additional
Clean Air Resources and Public
Engagement under AB 617

Initial Recommendations – April 30, 2018

Table of Contents

1	Introduction	2
2	District's Initial Community Recommendations	4
3	Prioritization of Recommended Communities	5
4	Public Participation.....	6

1 Introduction

The air quality challenges that the communities in the San Joaquin Valley face are unmatched by any other region in the nation. Despite decades of progress and significant reductions in air pollution, the San Joaquin Valley, due to its unique geography, topography, and meteorology, continues to face daunting challenges in meeting the latest federal health-based air quality standards. AB 617, if implemented properly, is expected to bring additional clean air resources and strategies to Valley communities that are burdened by socioeconomic disadvantages and air pollution despite significant emissions reductions that have already been achieved regionally.

The following charts illustrate the enormous progress that the San Joaquin Valley has experienced as a region:

Figure 1:

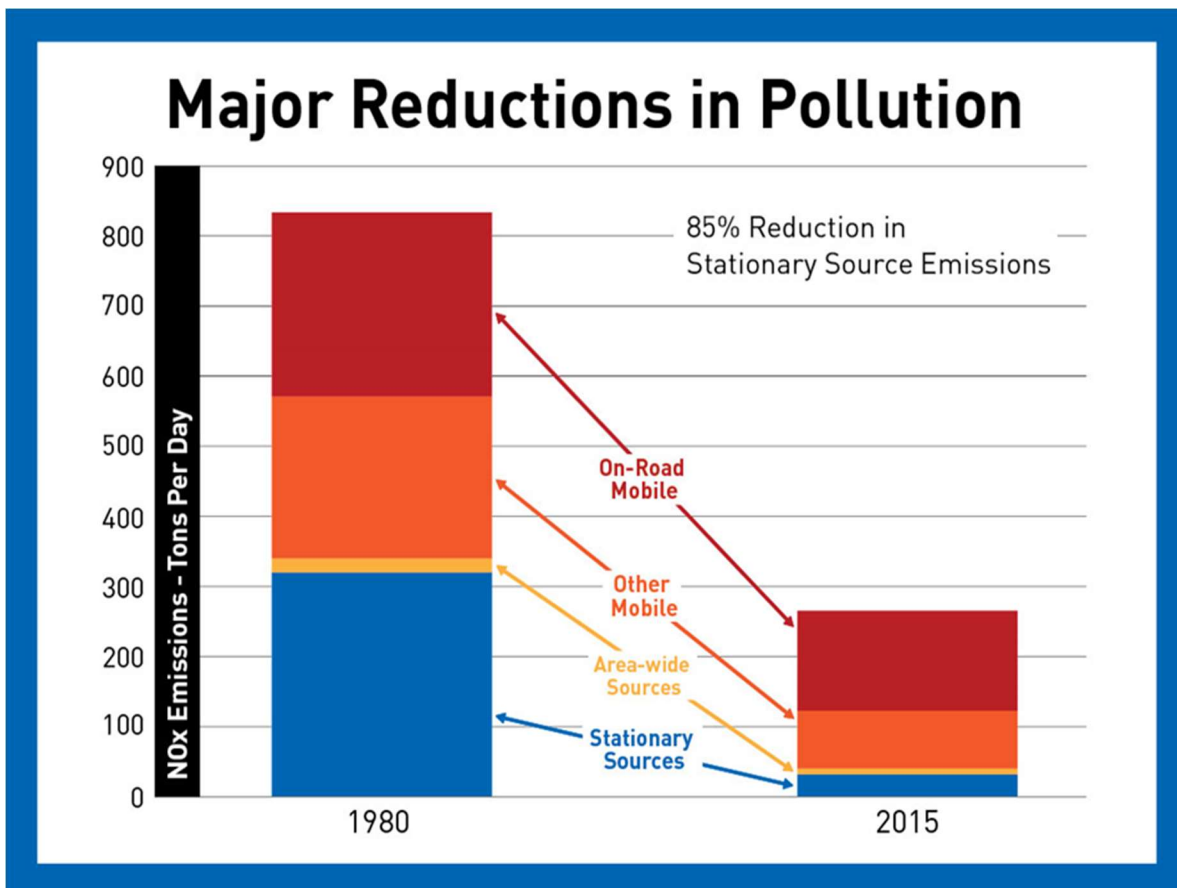


Figure 2:

Cancer Risk 95% Reduction

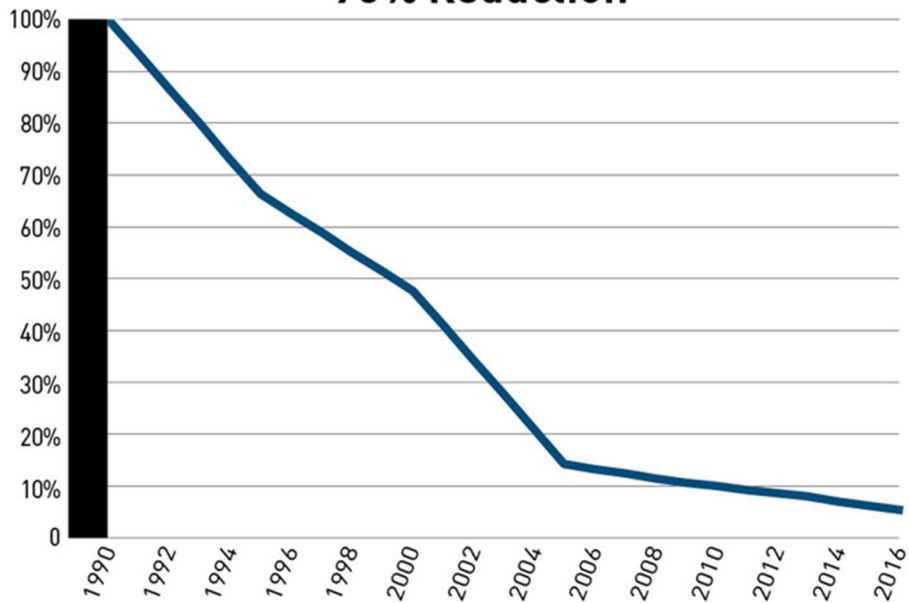


Figure 3:

Population Exposure to High PM2.5 Days 85% Reduction

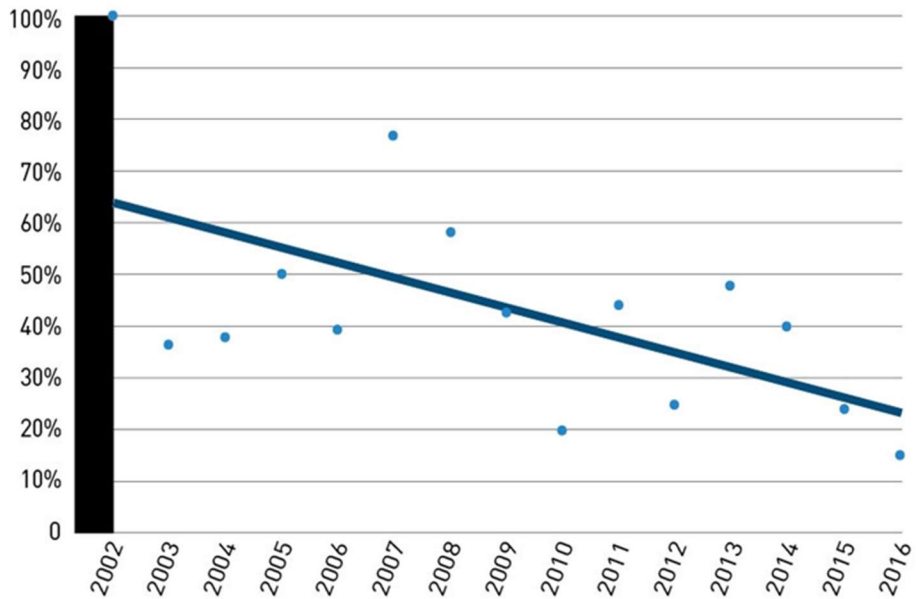
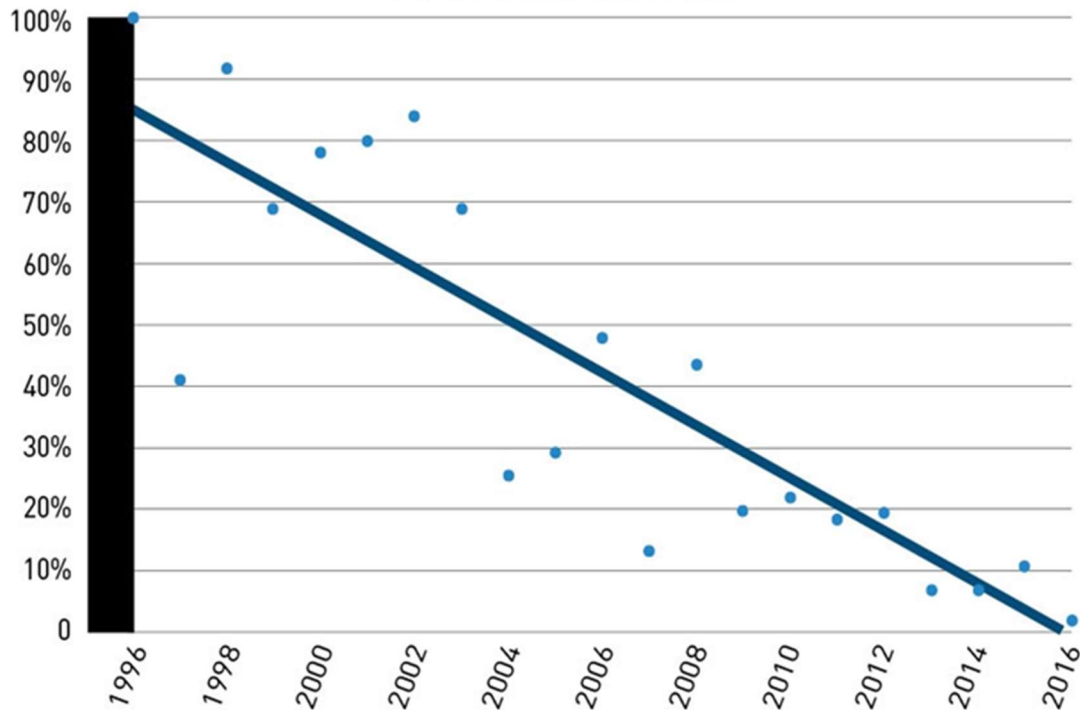


Figure 4:

Population Exposure to High Ozone Days 90% Reduction



2 District's Initial Community Recommendations

To assist CARB in the selection of communities under AB 617, CARB has requested that the District provide its recommended initial list of communities by April 30, 2018 and then a final list of recommended communities be submitted to CARB by July 31, 2018 after a robust public process. Appendix A is the list of communities recommended by the District based on community self-nominations received and the following criteria:

- **Include the top 30% most impacted communities, as determined by CalEnviroScreen, within California located within the San Joaquin Valley:**
The District believes that the true burden on a community must include cumulative burden from multiple factors including socioeconomic conditions and health impacts from other causes including air pollution. The District accepts CalEnviroScreen as the best available tool for identifying disadvantaged communities taking into account overall cumulative burdens.

- ***Include census tracts with spatial distribution of gridded diesel PM emissions that exceed 10 kg/day from on-road and non-road sources:*** Diesel particulate emissions are the single largest air pollution contributor to cancer health risk in the Valley and state. It is estimated that about 70% of total known cancer risk related to air toxics in California is attributable to diesel particulate matter.

3 Prioritization of Recommended Communities

Due to the large number of impacted communities throughout the state and limited available resources, the District recognizes that action to further reduce emissions must be phased in over multiple years. Therefore, the districts and CARB must develop criteria for communities that will be selected for action each year. Towards that end, the District recommends the following criteria for prioritizing communities in the San Joaquin Valley:

- A. Population-weighted exposure to high concentrations of PM2.5:*** Although a community as a whole may be designated as non-attainment under the federal Clean Air Act, the frequency by which a community is exposed to high levels of PM2.5 concentrations varies greatly throughout the San Joaquin Valley. This is also true with respect to the magnitude of peak concentration experienced in each community. The District believes that communities where a greater portion of the population experiences higher frequency and magnitude of PM2.5 concentrations should be prioritized.
- B. Population-weighted exposure to high concentrations of ozone:*** Although a community as a whole may be designated as non-attainment under the federal Clean Air Act, the frequency by which a community is exposed to high levels of ozone concentrations varies greatly throughout the San Joaquin Valley. This is also true with respect to the magnitude of peak concentration experienced in each community. The District believes that communities where a greater portion of the population experiences higher frequency and magnitude of ozone concentrations should be prioritized.
- C. Greater exposure to PM2.5 vs ozone:*** Although exposure to high levels of ozone has an impact to public health, numerous studies have indicated that prolonged exposure to high concentrations of PM2.5 has an even greater impact on health, including decreased lung function, hypertension, heart disease, cancer, and heart failure. Due to this, the District recognizes that PM2.5 has a more severe health impact than ozone, and should be prioritized as such.
- D. Communities for which action to reduce air pollution will provide health benefits to other communities:*** The District envisions opportunities where actions to reduce air pollution in certain communities has the potential to benefit other communities in the region. These scenarios could occur when reductions

in emissions in one community can benefit other communities downwind that are indirectly impacted by the same stream of air pollution. Furthermore, additional communities can benefit from reducing air pollution from mobile sources of air pollution involving vehicles that travel regionally.

- E. Households that are both low income and severely burdened by housing costs:** Studies have shown that high rent burden can mean a higher likelihood of postponing medical services for financial reasons. High rent burden is also associated with worse self-reported health conditions. High housing cost burdens and unaffordable housing situations can also contribute to residential instability, increase vulnerability to acute and chronic health problems, worsen stress and depression, and can lead to poor educational outcomes for children.
- F. Poverty:** Wealth influences health because it helps determine one's living conditions, nutrition, occupation, and access to health care and other health-promoting resources. For example, studies have shown a stronger effect of air pollution on mortality and childhood asthma among low income communities. Other studies have found that neighborhood-level income modifies the relationship between particulate air pollution and preterm birth as well as traffic and low birth weight, with mothers living in low income neighborhoods having higher risk of both outcomes.
- G. Unemployment:** Studies of neighborhood socioeconomic factors have found stress to be a major factor in reported poor health among residents of disadvantaged communities, and both financial and emotional stress are direct results of unemployment.

4 Public Participation

The District has been undergoing an extensive and robust public process to solicit public input on the implementation of AB 617 requirements, including multiple public workshops and meetings throughout the Valley. As part of this ongoing effort, the District invites public comments with respect to this initial list of communities and the proposed prioritization criteria. Public comments may be emailed to ab617@valleyair.org. In addition, the District will hold public workshops in the coming months to receive public input prior to submitting the final list of recommended communities and prioritization factors to CARB by July 31, 2018.

Appendix A:

Initial List of Communities Recommended for Additional Clean Air Resources under AB 617

(Updated on May 2, 2018 to include additional information for each recommended census tract)

Census Tract	Population	County	ZIP	City	Poverty Percentile	Housing Burden Percentile	Unemployment Percentile
6019000100	2860	Fresno	93721	Fresno	99.21	66.51	NA
6019000200	3167	Fresno	93706	Fresno	99.56	97.85	87.98
6019000300	3609	Fresno	93706	Fresno	97.88	91.06	66.75
6019000400	6343	Fresno	93721	Fresno	99.08	71.34	98.27
6019000501	2815	Fresno	93721	Fresno	94.90	99.21	72.98
6019000502	3606	Fresno	93701	Fresno	98.58	65.55	77.88
6019000600	6161	Fresno	93721	Fresno	99.80	97.96	97.07
6019000700	3921	Fresno	93706	Fresno	89.58	86.28	66.75
6019000800	964	Fresno	93706	Fresno	97.22	81.19	93.43
6019000901	3151	Fresno	93706	Fresno	98.62	21.74	99.19
6019000902	5252	Fresno	93706	Fresno	97.54	63.54	97.13
6019001000	4106	Fresno	93706	Fresno	95.90	90.72	95.49
6019001100	3174	Fresno	93706	Fresno	97.12	79.40	91.72
6019001201	5936	Fresno	93725	Fresno	93.51	89.79	95.58
6019001202	4756	Fresno	93725	Fresno	97.60	88.06	96.99
6019001301	5653	Fresno	93702	Fresno	98.97	87.38	95.77
6019001303	2888	Fresno	93702	Fresno	99.92	89.79	75.99
6019001304	5796	Fresno	93702	Fresno	98.74	76.12	97.36
6019001407	4694	Fresno	93727	Fresno	97.20	99.58	96.54
6019001408	2504	Fresno	93727	Fresno	78.52	79.97	69.48
6019001409	1848	Fresno	93727	Fresno	37.39	3.88	38.51
6019001410	9109	Fresno	93725	Fresno	73.76	38.46	74.37
6019001411	5276	Fresno	93727	Fresno	73.19	76.43	89.57
6019001412	2790	Fresno	93727	Fresno	56.42	21.22	37.67
6019001413	4605	Fresno	93727	Fresno	36.22	42.08	75.52
6019001414	7381	Fresno	93727	Fresno	40.39	7.46	51.17
6019001500	2206	Fresno	93725	Fresno	90.23	83.98	93.65

Census Tract	Population	County	ZIP	City	Poverty Percentile	Housing Burden Percentile	Unemployment Percentile
6019001600	5099	Fresno	93625	Fowler	79.81	57.34	39.54
6019001700	5701	Fresno	93725	Fresno	71.92	53.12	79.15
6019001800	4615	Fresno	93706	Fresno	63.92	31.01	68.17
6019001900	2914	Fresno	93706	Fresno	77.93	26.43	84.10
6019002000	6369	Fresno	93728	Fresno	98.58	75.53	96.99
6019002100	5419	Fresno	93728	Fresno	82.58	75.25	90.63
6019002200	3594	Fresno	93728	Fresno	80.41	47.99	96.54
6019002300	3624	Fresno	93728	Fresno	92.76	91.06	97.79
6019002400	4959	Fresno	93703	Fresno	98.43	96.34	94.64
6019002501	5098	Fresno	93703	Fresno	99.82	93.45	97.26
6019002502	5431	Fresno	93702	Fresno	99.64	96.23	97.99
6019002601	5821	Fresno	93702	Fresno	96.48	75.01	86.88
6019002602	3520	Fresno	93702	Fresno	93.35	89.19	51.17
6019002701	4673	Fresno	93702	Fresno	93.48	83.85	98.45
6019002702	5882	Fresno	93702	Fresno	97.96	83.56	82.00
6019002800	5205	Fresno	93703	Fresno	98.43	89.19	96.90
6019002903	4329	Fresno	93727	Fresno	98.54	94.71	71.82
6019002904	2897	Fresno	93727	Fresno	78.63	68.95	84.41
6019002905	2889	Fresno	93727	Fresno	85.72	79.06	56.11
6019002906	5520	Fresno	93727	Fresno	95.11	71.34	68.17
6019003001	3175	Fresno	93727	Fresno	81.55	93.89	73.59
6019003003	4154	Fresno	93727	Fresno	97.44	92.90	87.12
6019003004	2301	Fresno	93727	Fresno	73.05	44.81	71.24
6019003102	7048	Fresno	93612	Clovis	82.83	50.33	94.29
6019003103	5708	Fresno	93612	Clovis	70.94	58.97	72.43
6019003104	3810	Fresno	93727	Fresno	60.93	3.41	20.10
6019003201	4398	Fresno	93703	Fresno	92.82	83.98	91.95

Census Tract	Population	County	ZIP	City	Poverty Percentile	Housing Burden Percentile	Unemployment Percentile
6019003202	5265	Fresno	93703	Fresno	88.49	91.84	97.33
6019003301	3507	Fresno	93703	Fresno	79.23	55.15	94.89
6019003302	4749	Fresno	93703	Fresno	91.41	83.12	76.34
6019003400	4555	Fresno	93703	Fresno	94.57	95.35	96.04
6019003500	5674	Fresno	93704	Fresno	77.32	88.17	93.06
6019003600	4009	Fresno	93704	Fresno	58.89	43.59	47.67
6019003701	3314	Fresno	93705	Fresno	92.76	92.90	86.61
6019003702	4933	Fresno	93705	Fresno	87.68	71.34	92.85
6019003803	8153	Fresno	93723	Fresno	59.35	41.57	75.52
6019003804	5531	Fresno	93722	Fresno	66.64	32.25	81.11
6019003805	6852	Fresno	93722	Fresno	97.49	67.03	92.85
6019003807	3362	Fresno	93722	Fresno	75.31	28.07	96.67
6019003808	5082	Fresno	93722	Fresno	68.81	28.07	48.58
6019003809	4771	Fresno	93722	Fresno	75.70	40.44	91.56
6019003810	5256	Fresno	93722	Fresno	54.00	47.99	88.46
6019003900	5804	Fresno	93630	Kerman	82.70	22.21	28.77
6019004001	7248	Fresno	93630	Kerman	75.02	49.89	64.73
6019004002	7129	Fresno	93630	Kerman	79.92	40.44	38.51
6019004100	3306	Fresno	93723	Fresno	78.74	0.84	80.26
6019004205	5888	Fresno	93722	Fresno	85.14	90.96	71.82
6019004207	8115	Fresno	93723	Fresno	58.37	15.05	65.55
6019004208	7124	Fresno	93722	Fresno	9.49	8.86	29.83
6019004210	3480	Fresno	93722	Fresno	66.64	62.74	64.73
6019004211	6319	Fresno	93722	Fresno	28.11	4.86	50.27
6019004212	10762	Fresno	93722	Fresno	65.13	38.06	71.24
6019004213	3248	Fresno	93711	Fresno	49.33	22.21	74.93
6019004214	4978	Fresno	93711	Fresno	38.16	19.64	10.41

Census Tract	Population	County	ZIP	City	Poverty Percentile	Housing Burden Percentile	Unemployment Percentile
6019004215	4475	Fresno	93722	Fresno	32.92	8.12	57.71
6019004216	2629	Fresno	93722	Fresno	51.23	8.35	73.59
6019004301	3853	Fresno	93711	Fresno	15.06	24.99	6.38
6019004302	4848	Fresno	93711	Fresno	29.57	17.12	37.67
6019004303	4162	Fresno	93711	Fresno	28.60	18.24	11.17
6019004404	3556	Fresno	93650	Fresno	89.13	63.54	92.25
6019004405	4040	Fresno	93720	Fresno	18.69	16.78	15.01
6019004406	5211	Fresno	93720	Fresno	51.73	20.17	85.53
6019004408	3517	Fresno	93711	Fresno	42.16	56.50	66.75
6019004409	3486	Fresno	93711	Fresno	45.72	37.46	68.17
6019004503	4723	Fresno	93704	Fresno	39.46	15.05	58.46
6019004504	4762	Fresno	93710	Fresno	77.93	39.54	79.45
6019004505	4866	Fresno	93710	Fresno	88.59	82.18	99.34
6019004506	3158	Fresno	93704	Fresno	17.69	15.99	51.87
6019004601	2641	Fresno	93705	Fresno	58.16	32.25	62.53
6019004602	2555	Fresno	93704	Fresno	39.92	15.45	4.25
6019004701	6682	Fresno	93705	Fresno	94.12	78.41	90.40
6019004703	4218	Fresno	93705	Fresno	86.90	79.40	95.77
6019004704	5212	Fresno	93705	Fresno	98.48	93.75	84.73
6019004801	4604	Fresno	93704	Fresno	92.88	94.58	79.82
6019004802	4599	Fresno	93705	Fresno	95.65	88.36	98.32
6019004901	4052	Fresno	93704	Fresno	87.43	81.47	12.69
6019004902	1985	Fresno	93704	Fresno	86.49	47.99	86.61
6019005000	3917	Fresno	93726	Fresno	87.94	24.99	87.98
6019005100	5723	Fresno	93726	Fresno	90.80	83.12	96.83
6019005202	3619	Fresno	93726	Fresno	92.95	67.35	90.63
6019005203	4519	Fresno	93726	Fresno	84.78	66.51	97.54

Census Tract	Population	County	ZIP	City	Poverty Percentile	Housing Burden Percentile	Unemployment Percentile
6019005204	4105	Fresno	93726	Fresno	92.22	94.14	94.89
6019005301	5740	Fresno	93726	Fresno	74.00	55.15	75.52
6019005302	5208	Fresno	93726	Fresno	92.22	58.64	61.35
6019005304	5305	Fresno	93726	Fresno	88.96	60.71	98.20
6019005305	3635	Fresno	93726	Fresno	89.82	48.53	89.26
6019005403	4171	Fresno	93710	Fresno	98.37	96.15	93.65
6019005405	4145	Fresno	93710	Fresno	32.24	33.07	35.89
6019005406	3899	Fresno	93710	Fresno	37.39	8.35	44.97
6019005407	3139	Fresno	93710	Fresno	57.98	9.14	26.31
6019005408	1276	Fresno	93710	Fresno	98.78	98.86	81.61
6019005409	3560	Fresno	93710	Fresno	87.19	84.96	95.33
6019005410	3298	Fresno	93710	Fresno	59.67	37.46	87.69
6019005503	4254	Fresno	93730	Fresno	30.60	9.47	39.54
6019005504	2295	Fresno	93730	Fresno	17.26	7.25	36.77
6019005505	6613	Fresno	93720	Fresno	15.93	0.67	59.12
6019005507	5732	Fresno	93720	Fresno	25.77	4.86	15.01
6019005508	5796	Fresno	93619	Clovis	8.42	1.94	63.24
6019005509	4678	Fresno	93611	Clovis	44.68	27.27	32.87
6019005510	4997	Fresno	93720	Fresno	35.01	47.99	34.89
6019005512	4824	Fresno	93611	Clovis	20.89	8.35	11.17
6019005513	2952	Fresno	93611	Clovis	12.92	0.44	53.51
6019005514	3961	Fresno	93611	Clovis	29.15	37.46	71.24
6019005516	5527	Fresno	93720	Fresno	24.21	42.08	74.37
6019005517	7487	Fresno	93730	Fresno	3.18	3.63	1.98
6019005518	2753	Fresno	93619	Clovis	13.94	21.22	0.95
6019005520	2698	Fresno	93619	Clovis	4.26	5.52	6.94
6019005522	4467	Fresno	93619	Clovis	12.43	1.32	20.10

Census Tract	Population	County	ZIP	City	Poverty Percentile	Housing Burden Percentile	Unemployment Percentile
6019005524	4571	Fresno	93619	Clovis	2.82	5.27	17.29
6019005602	5467	Fresno	93612	Clovis	74.12	47.99	22.33
6019005605	1470	Fresno	93710	Fresno	32.24	1.21	39.54
6019005606	3847	Fresno	93612	Clovis	59.86	23.51	32.87
6019005607	3993	Fresno	93612	Clovis	91.80	65.14	94.64
6019005608	3064	Fresno	93612	Clovis	77.10	51.90	96.83
6019005701	3697	Fresno	93611	Clovis	44.68	76.91	59.12
6019005702	5243	Fresno	93611	Clovis	15.06	0.09	45.97
6019005703	5176	Fresno	93611	Clovis	21.68	5.52	47.67
6019005704	5542	Fresno	93612	Clovis	70.14	36.08	82.80
6019005801	4856	Fresno	93727	Fresno	65.69	61.65	48.58
6019005802	4195	Fresno	93611	Clovis	14.33	22.21	5.53
6019005804	6626	Fresno	93611	Clovis	70.61	46.84	79.82
6019005805	3798	Fresno	93727	Fresno	37.95	20.17	40.51
6019005904	4192	Fresno	93657	Sanger	9.35	0.29	23.82
6019005907	3095	Fresno	93611	Clovis	15.29	2.01	15.01
6019005909	4627	Fresno	93619	Clovis	19.66	1.84	61.91
6019005911	3386	Fresno	93619	Clovis	20.89	1.21	76.86
6019006000	8895	Fresno	93657	Sanger	63.76	58.97	51.17
6019006100	7536	Fresno	93657	Sanger	68.32	30.01	84.10
6019006201	2608	Fresno	93657	Sanger	98.06	75.53	92.68
6019006202	6807	Fresno	93657	Sanger	86.49	35.16	87.98
6019006300	7254	Fresno	93654	Reedley	40.62	40.44	68.17
6019006501	6662	Fresno	93654	Reedley	94.38	72.81	92.68
6019006502	4159	Fresno	93646	Orange Cove	96.73	91.84	94.89
6019006602	5597	Fresno	93654	Reedley	97.65	88.79	80.26
6019006603	2047	Fresno	93654	Reedley	58.63	36.08	48.58

Census Tract	Population	County	ZIP	City	Poverty Percentile	Housing Burden Percentile	Unemployment Percentile
6019006604	7959	Fresno	93654	Reedley	93.48	57.34	94.42
6019006700	6304	Fresno	93654	Reedley	54.58	19.19	77.40
6019006802	4019	Fresno	93654	Reedley	92.39	42.08	NA
6019006900	3170	Fresno	93616	Del Rey	92.14	69.29	88.22
6019007002	4514	Fresno	93662	Selma	89.30	32.25	46.86
6019007003	7750	Fresno	93662	Selma	61.04	21.22	84.41
6019007004	5520	Fresno	93662	Selma	55.73	29.06	28.77
6019007100	7904	Fresno	93662	Selma	93.84	45.46	85.53
6019007201	7671	Fresno	93631	Kingsburg	45.96	15.45	43.10
6019007202	5109	Fresno	93631	Kingsburg	57.98	75.25	92.68
6019007300	4869	Fresno	93662	Selma	81.73	38.06	72.43
6019007400	3548	Fresno	93242	Laton	79.75	14.00	74.93
6019007500	5287	Fresno	93609	Caruthers	82.20	36.48	87.12
6019007600	4806	Fresno	93706	Fresno	94.20	34.69	42.25
6019007700	5599	Fresno	93656	Riverdale	88.59	34.69	83.70
6019007801	2722	Fresno	93234	Huron	96.35	2.81	15.84
6019007802	5269	Fresno	93234	Huron	99.74	65.14	82.35
6019008100	5691	Fresno	93210	Coalinga	66.81	17.12	76.86
6019008200	6978	Fresno	93608	Cantua Creek	96.90	62.07	55.30
6019008301	5989	Fresno	93640	Mendota	97.40	79.40	98.88
6019008302	6562	Fresno	93640	Mendota	99.57	82.93	98.88
6019008401	7991	Fresno	93622	Firebaugh	84.19	44.26	66.75
6019008402	1152	Fresno	93622	Firebaugh	91.33	1.75	65.55
6019008501	4585	Fresno	93662	Selma	99.12	61.07	98.39
6019008502	7929	Fresno	93648	Parlier	95.99	61.65	93.78
6029000101	12240	Kern	93308	Bakersfield	45.56	44.26	44.97
6029000102	3055	Kern	93308	Bakersfield	72.22	24.49	91.37

Census Tract	Population	County	ZIP	City	Poverty Percentile	Housing Burden Percentile	Unemployment Percentile
6029000200	7644	Kern	93308	Bakersfield	96.52	93.35	89.57
6029000300	4217	Kern	93308	Bakersfield	91.90	74.03	98.32
6029000400	4319	Kern	93308	Bakersfield	97.34	91.06	96.67
6029000503	6347	Kern	93314	Bakersfield	9.35	3.63	15.01
6029000504	4086	Kern	93308	Bakersfield	61.94	51.56	55.30
6029000505	3764	Kern	93308	Bakersfield	14.58	11.34	3.55
6029000506	2795	Kern	93308	Bakersfield	42.41	34.69	23.82
6029000507	3598	Kern	93308	Bakersfield	30.60	16.78	32.10
6029000600	6931	Kern	93301	Bakersfield	95.68	89.79	80.26
6029000700	4825	Kern	93305	Bakersfield	55.54	12.12	54.39
6029000800	4925	Kern	93305	Bakersfield	67.09	45.93	97.13
6029000902	3340	Kern	93306	Bakersfield	58.16	39.87	95.65
6029000903	3653	Kern	93306	Bakersfield	71.16	29.56	46.86
6029000904	4008	Kern	93306	Bakersfield	69.18	32.67	56.83
6029000905	2483	Kern	93306	Bakersfield	56.79	49.47	78.74
6029000906	4355	Kern	93306	Bakersfield	52.70	36.48	44.04
6029000907	2463	Kern	93306	Bakersfield	72.68	44.81	74.37
6029000908	5493	Kern	93306	Bakersfield	68.61	14.52	33.82
6029000909	2406	Kern	93306	Bakersfield	16.67	0.14	12.69
6029001000	9186	Kern	93307	Bakersfield	80.87	29.56	92.25
6029001101	4413	Kern	93306	Bakersfield	96.13	45.93	59.12
6029001102	6682	Kern	93306	Bakersfield	96.22	85.57	95.49
6029001103	4782	Kern	93306	Bakersfield	97.74	86.70	89.02
6029001201	2895	Kern	93305	Bakersfield	98.84	94.00	96.04
6029001202	6264	Kern	93305	Bakersfield	98.82	92.51	87.69
6029001300	7559	Kern	93305	Bakersfield	98.96	90.00	91.56
6029001400	7766	Kern	93305	Bakersfield	97.20	96.53	97.91

Census Tract	Population	County	ZIP	City	Poverty Percentile	Housing Burden Percentile	Unemployment Percentile
6029001500	3147	Kern	93305	Bakersfield	99.03	92.98	75.99
6029001600	1390	Kern	93301	Bakersfield	94.70	82.48	90.20
6029001700	4287	Kern	93301	Bakersfield	56.04	20.17	38.51
6029001801	5579	Kern	93309	Bakersfield	76.42	32.25	44.04
6029001802	5408	Kern	93309	Bakersfield	36.04	22.66	44.97
6029001901	3434	Kern	93304	Bakersfield	61.77	38.46	51.87
6029001902	4679	Kern	93304	Bakersfield	90.47	77.60	81.11
6029002000	7111	Kern	93304	Bakersfield	96.13	98.03	57.71
6029002100	3852	Kern	93307	Bakersfield	94.03	90.72	97.46
6029002200	6537	Kern	93307	Bakersfield	98.54	95.93	99.92
6029002301	9743	Kern	93307	Bakersfield	97.12	89.79	97.13
6029002302	3378	Kern	93307	Bakersfield	94.34	94.00	97.54
6029002400	7478	Kern	93307	Bakersfield	86.98	80.81	91.56
6029002500	9122	Kern	93307	Bakersfield	95.55	81.19	99.51
6029002600	3539	Kern	93307	Bakersfield	83.58	77.86	89.02
6029002700	5370	Kern	93304	Bakersfield	78.78	62.74	73.59
6029002804	2672	Kern	93309	Bakersfield	40.06	32.25	11.17
6029002806	2176	Kern	93311	Bakersfield	39.28	30.46	42.25
6029002807	3894	Kern	93309	Bakersfield	6.47	0.77	9.37
6029002808	7257	Kern	93311	Bakersfield	37.25	37.46	11.75
6029002811	3854	Kern	93311	Bakersfield	0.26	3.88	0.56
6029002812	5215	Kern	93309	Bakersfield	91.57	94.22	98.69
6029002813	4161	Kern	93309	Bakersfield	87.59	70.20	82.80
6029002814	4158	Kern	93309	Bakersfield	79.75	65.14	71.82
6029002815	4282	Kern	93309	Bakersfield	72.32	53.71	85.53
6029002816	5465	Kern	93309	Bakersfield	85.47	53.12	87.38
6029002817	5173	Kern	93309	Bakersfield	85.57	40.44	86.24

Census Tract	Population	County	ZIP	City	Poverty Percentile	Housing Burden Percentile	Unemployment Percentile
6029002818	3761	Kern	93309	Bakersfield	41.86	44.26	20.10
6029002819	4586	Kern	93309	Bakersfield	64.79	24.99	19.25
6029002820	6301	Kern	93311	Bakersfield	29.15	7.02	20.10
6029002821	4897	Kern	93311	Bakersfield	40.21	23.19	36.77
6029002900	7449	Kern	93304	Bakersfield	81.22	62.74	88.46
6029003000	7374	Kern	93304	Bakersfield	92.61	79.70	91.95
6029003103	3979	Kern	93307	Bakersfield	91.33	74.38	99.23
6029003112	5116	Kern	93313	Bakersfield	59.07	35.16	57.71
6029003113	4784	Kern	93304	Bakersfield	85.87	73.17	72.98
6029003114	7654	Kern	93313	Bakersfield	59.07	37.46	85.16
6029003115	5482	Kern	93304	Bakersfield	83.27	76.43	85.53
6029003121	8264	Kern	93307	Bakersfield	93.12	93.56	99.00
6029003122	8845	Kern	93307	Bakersfield	81.99	51.56	65.55
6029003123	15296	Kern	93311	Bakersfield	15.93	37.46	64.04
6029003124	5414	Kern	93313	Bakersfield	36.86	42.08	85.53
6029003202	15579	Kern	93307	Bakersfield	86.25	55.59	79.45
6029003203	2383	Kern	93314	Bakersfield	0.93	1.42	48.58
6029003205	8998	Kern	93313	Bakersfield	62.80	57.34	46.86
6029003206	12112	Kern	93313	Bakersfield	51.44	49.47	50.27
6029003304	5248	Kern	93251	MC Kittrick	53.53	6.04	89.91
6029003400	4318	Kern	93268	Taft	84.34	58.64	72.98
6029003500	6156	Kern	93268	Taft	71.92	34.69	44.04
6029003700	3953	Kern	93206	Buttonwillow	64.94	20.17	76.86
6029003804	15464	Kern	93312	Bakersfield	19.08	10.35	1.98
6029003805	8774	Kern	93312	Bakersfield	14.58	0.56	55.30
6029003806	4889	Kern	93312	Bakersfield	17.54	7.02	12.69
6029003807	3616	Kern	93312	Bakersfield	45.37	4.24	83.70

Census Tract	Population	County	ZIP	City	Poverty Percentile	Housing Burden Percentile	Unemployment Percentile
6029003808	4439	Kern	93312	Bakersfield	22.77	9.14	18.33
6029003810	2578	Kern	93312	Bakersfield	3.72	0.24	26.31
6029003811	2661	Kern	93312	Bakersfield	43.07	10.35	48.58
6029003812	4367	Kern	93312	Bakersfield	26.00	12.49	47.67
6029003813	7613	Kern	93312	Bakersfield	8.08	2.26	15.01
6029003900	2250	Kern	93263	Shafter	79.28	NA	NA
6029004000	7704	Kern	93263	Shafter	81.48	44.81	65.55
6029004101	4917	Kern	93263	Shafter	74.22	19.19	62.53
6029004102	5451	Kern	93263	Shafter	97.90	39.08	98.27
6029004200	1320	Kern	93263	Shafter	82.38	46.43	79.82
6029004301	7416	Kern	93280	Wasco	84.86	27.27	87.98
6029004302	5710	Kern	93280	Wasco	NA	NA	NA
6029004402	5437	Kern	93280	Wasco	99.31	58.01	92.68
6029004500	3937	Kern	93249	Lost Hills	95.75	39.08	26.31
6029004604	15845	Kern	93250	MC Farland	80.59	65.55	79.45
6029004701	8868	Kern	93250	MC Farland	98.29	60.24	92.25
6029004702	4051	Kern	93250	MC Farland	96.90	64.39	91.10
6029004800	9297	Kern	93215	Delano	98.65	65.14	91.10
6029004901	5733	Kern	93215	Delano	93.19	56.09	93.22
6029004902	8349	Kern	93215	Delano	77.39	62.07	88.46
6029005003	3543	Kern	93215	Delano	94.90	74.73	88.68
6029005004	7219	Kern	93215	Delano	72.82	36.08	38.51
6029005103	2564	Kern	93308	Bakersfield	47.68	7.02	53.51
6029005204	6158	Kern	93285	Wofford Heights	86.25	56.50	84.10
6029006007	5474	Kern	93560	Rosamond	27.59	3.05	63.24
6029006201	2877	Kern	93307	Bakersfield	90.71	21.74	87.12

Census Tract	Population	County	ZIP	City	Poverty Percentile	Housing Burden Percentile	Unemployment Percentile
6029006202	6401	Kern	93203	Arvin	84.65	42.51	48.58
6029006303	6784	Kern	93203	Arvin	98.89	50.33	94.73
6029006304	3895	Kern	93203	Arvin	98.19	35.52	85.89
6029006401	8320	Kern	93241	Lamont	92.67	52.30	71.82
6031000100	3457	Kings	93230	Hanford	56.54	2.63	48.58
6031000200	2271	Kings	93245	Lemoore	51.73	56.09	12.69
6031000300	7446	Kings	93245	Lemoore	78.30	72.81	90.40
6031000403	5281	Kings	93245	Lemoore	67.97	19.64	94.29
6031000404	9791	Kings	93245	Lemoore	53.60	9.47	49.49
6031000500	5476	Kings	93230	Hanford	74.22	33.07	97.96
6031000601	10021	Kings	93230	Hanford	40.39	14.00	68.79
6031000602	5676	Kings	93230	Hanford	7.67	2.37	4.65
6031000701	5321	Kings	93230	Hanford	35.58	7.25	18.33
6031000800	4858	Kings	93230	Hanford	72.32	17.58	81.61
6031000900	8057	Kings	93230	Hanford	94.47	46.43	95.33
6031001001	4176	Kings	93230	Hanford	38.16	9.14	59.88
6031001002	4424	Kings	93230	Hanford	87.50	76.12	90.40
6031001003	5699	Kings	93230	Hanford	75.81	35.52	83.18
6031001100	6613	Kings	93230	Hanford	95.14	57.74	96.14
6031001300	3761	Kings	93212	Corcoran	95.86	75.53	96.61
6031001401	3002	Kings	93212	Corcoran	91.11	54.70	68.79
6031001402	2384	Kings	93212	Corcoran	97.88	96.03	34.89
6031001601	4516	Kings	93239	Kettleman City	86.25	36.94	74.37
6031001701	9142	Kings	93204	Avenal	95.14	88.58	92.85
6039000201	9049	Madera	93610	Chowchilla	72.82	NA	NA
6039000202	6109	Madera	93610	Chowchilla	70.94	25.51	35.89

Census Tract	Population	County	ZIP	City	Poverty Percentile	Housing Burden Percentile	Unemployment Percentile
6039000300	8213	Madera	93610	Chowchilla	90.63	81.91	55.30
6039000400	1288	Madera	93622	Firebaugh	65.38	18.24	91.37
6039000502	10473	Madera	93637	Madera	91.57	60.24	13.48
6039000503	8539	Madera	93637	Madera	28.60	15.05	34.89
6039000506	6438	Madera	93638	Madera	62.41	15.05	15.01
6039000507	10546	Madera	93638	Madera	76.57	41.57	20.10
6039000508	6878	Madera	93636	Madera	84.19	15.99	43.10
6039000602	5161	Madera	93638	Madera	95.31	75.01	5.98
6039000603	5585	Madera	93638	Madera	89.69	68.44	20.10
6039000604	5467	Madera	93638	Madera	95.46	24.03	24.66
6039000700	10776	Madera	93637	Madera	37.66	10.07	20.10
6039000800	7027	Madera	93637	Madera	94.82	59.39	24.66
6039000900	9612	Madera	93638	Madera	96.79	58.97	53.51
6039001000	5319	Madera	93637	Madera	62.07	5.12	33.82
6047000201	3626	Merced	95303	Ballico	77.93	28.61	76.86
6047000202	1841	Merced	95315	Delhi	90.01	NA	23.82
6047000203	9272	Merced	95315	Delhi	72.57	12.49	82.35
6047000301	4790	Merced	95334	Livingston	70.61	25.51	86.61
6047000303	2158	Merced	95334	Livingston	67.97	12.49	93.06
6047000304	9116	Merced	95334	Livingston	70.28	32.67	80.71
6047000401	1834	Merced	95374	Stevinson	83.67	92.61	96.61
6047000503	3292	Merced	95388	Winton	63.76	42.51	61.91
6047000504	6129	Merced	95388	Winton	85.25	54.70	96.99
6047000505	6156	Merced	95301	Atwater	81.22	44.81	82.80
6047000601	5438	Merced	95301	Atwater	86.02	73.51	87.69
6047000602	3550	Merced	95301	Atwater	91.33	42.51	97.26
6047000603	6143	Merced	95301	Atwater	81.31	39.08	92.25

Census Tract	Population	County	ZIP	City	Poverty Percentile	Housing Burden Percentile	Unemployment Percentile
6047000701	3191	Merced	95301	Atwater	95.60	47.33	99.82
6047000801	4444	Merced	95301	Atwater	59.67	32.25	72.43
6047000802	4296	Merced	95301	Atwater	43.77	16.35	30.90
6047000901	3970	Merced	95341	Merced	67.28	12.12	55.30
6047000902	8419	Merced	95341	Merced	80.41	44.26	89.91
6047001002	13467	Merced	95348	Merced	60.40	47.33	91.95
6047001003	4061	Merced	95348	Merced	95.55	89.79	97.07
6047001004	3968	Merced	95348	Merced	84.34	77.11	62.53
6047001005	2406	Merced	95348	Merced	91.41	31.78	98.95
6047001101	5880	Merced	95340	Merced	55.73	43.59	68.17
6047001200	5023	Merced	95340	Merced	66.64	26.43	62.53
6047001301	3213	Merced	95340	Merced	84.19	49.01	54.39
6047001302	3264	Merced	95340	Merced	94.78	90.00	98.62
6047001401	3953	Merced	95340	Merced	92.76	74.38	99.37
6047001402	4277	Merced	95340	Merced	78.74	56.50	96.19
6047001501	2693	Merced	95341	Merced	87.43	54.70	95.09
6047001502	2822	Merced	95341	Merced	98.29	73.51	99.66
6047001503	4438	Merced	95341	Merced	97.79	77.11	89.57
6047001601	4498	Merced	95341	Merced	99.96	37.46	72.43
6047001602	7243	Merced	95341	Merced	93.93	76.91	90.84
6047001700	6335	Merced	95341	Merced	92.07	73.51	92.68
6047001901	5739	Merced	95340	Merced	92.32	53.71	99.09
6047001902	2572	Merced	95333	Le Grand	79.75	27.27	95.09
6047002000	7835	Merced	95322	Gustine	76.87	46.43	91.10
6047002100	3862	Merced	93635	Los Banos	81.09	35.52	90.84
6047002201	6097	Merced	93635	Los Banos	96.35	71.34	86.61
6047002202	9923	Merced	93635	Los Banos	83.86	53.71	91.37

Census Tract	Population	County	ZIP	City	Poverty Percentile	Housing Burden Percentile	Unemployment Percentile
6047002301	6680	Merced	93635	Los Banos	49.33	31.42	23.07
6047002302	13709	Merced	93635	Los Banos	80.87	39.54	86.88
6047002401	1756	Merced	93620	Dos Palos	82.28	NA	35.89
6047002402	7505	Merced	93620	Dos Palos	93.35	57.74	98.20
6047002500	2328	Merced	95369	Snelling	56.23	26.43	76.34
6047002600	5319	Merced	95341	Merced	52.96	4.24	59.88
6077000100	3863	San Joaquin	95202	Stockton	99.42	95.80	99.73
6077000300	2396	San Joaquin	95203	Stockton	97.03	74.73	82.00
6077000401	3043	San Joaquin	95203	Stockton	69.30	24.03	56.11
6077000402	4582	San Joaquin	95202	Stockton	95.02	93.89	97.63
6077000500	2749	San Joaquin	95205	Stockton	91.01	99.49	96.40
6077000600	2279	San Joaquin	95205	Stockton	98.54	90.56	84.10
6077000700	5269	San Joaquin	95206	Stockton	98.19	90.96	89.02
6077000801	6692	San Joaquin	95203	Stockton	85.57	63.54	94.97
6077000900	5859	San Joaquin	95203	Stockton	81.60	71.34	97.72
6077001000	4915	San Joaquin	95204	Stockton	66.03	69.61	97.36
6077001101	4931	San Joaquin	95204	Stockton	69.30	30.46	79.82
6077001102	4889	San Joaquin	95204	Stockton	66.35	53.12	85.89

Census Tract	Population	County	ZIP	City	Poverty Percentile	Housing Burden Percentile	Unemployment Percentile
6077001200	5303	San Joaquin	95204	Stockton	50.26	16.78	56.11
6077001300	4903	San Joaquin	95204	Stockton	69.49	74.38	89.91
6077001400	4425	San Joaquin	95204	Stockton	75.21	41.03	64.73
6077001500	8384	San Joaquin	95205	Stockton	87.43	70.53	93.78
6077001600	2383	San Joaquin	95205	Stockton	94.47	56.92	90.84
6077001700	3998	San Joaquin	95205	Stockton	93.48	63.20	71.24
6077001800	3939	San Joaquin	95205	Stockton	88.17	82.67	95.49
6077001900	5592	San Joaquin	95205	Stockton	96.52	79.97	86.61
6077002000	3977	San Joaquin	95205	Stockton	92.01	62.43	93.82
6077002100	5546	San Joaquin	95205	Stockton	88.02	63.54	97.91
6077002201	2771	San Joaquin	95206	Stockton	91.90	80.81	84.41
6077002202	5417	San Joaquin	95206	Stockton	94.70	84.82	93.65
6077002300	5020	San Joaquin	95206	Stockton	96.13	97.25	92.68
6077002401	5001	San Joaquin	95206	Stockton	94.38	88.06	96.27
6077002402	2219	San Joaquin	95206	Stockton	93.73	89.79	97.07

Census Tract	Population	County	ZIP	City	Poverty Percentile	Housing Burden Percentile	Unemployment Percentile
6077002503	2560	San Joaquin	95206	Stockton	99.15	39.87	97.54
6077002504	3982	San Joaquin	95206	Stockton	72.13	35.52	62.53
6077002701	6409	San Joaquin	95215	Stockton	88.49	60.24	96.14
6077002702	4239	San Joaquin	95215	Stockton	94.90	55.15	92.93
6077002800	6052	San Joaquin	95206	Stockton	68.71	59.39	95.33
6077003109	5630	San Joaquin	95207	Stockton	58.89	31.78	74.93
6077003110	3708	San Joaquin	95207	Stockton	80.50	90.42	86.61
6077003111	3754	San Joaquin	95207	Stockton	75.02	70.53	44.04
6077003112	2974	San Joaquin	95207	Stockton	57.47	82.18	54.39
6077003113	6256	San Joaquin	95207	Stockton	85.05	79.97	89.02
6077003203	3519	San Joaquin	95207	Stockton	51.73	35.52	74.37
6077003205	3537	San Joaquin	95209	Stockton	46.11	15.45	90.40
6077003208	12534	San Joaquin	95209	Stockton	29.88	24.49	45.97
6077003209	3540	San Joaquin	95209	Stockton	42.29	36.94	74.37
6077003210	2800	San Joaquin	95209	Stockton	42.29	35.16	99.26

Census Tract	Population	County	ZIP	City	Poverty Percentile	Housing Burden Percentile	Unemployment Percentile
6077003213	4571	San Joaquin	95209	Stockton	59.86	65.14	91.10
6077003214	3054	San Joaquin	95209	Stockton	36.47	11.34	74.37
6077003216	2725	San Joaquin	95209	Stockton	57.98	73.17	95.49
6077003305	3704	San Joaquin	95207	Stockton	64.30	32.67	92.25
6077003306	4229	San Joaquin	95207	Stockton	73.76	47.33	65.55
6077003307	4559	San Joaquin	95207	Stockton	90.23	87.64	95.15
6077003308	1590	San Joaquin	95207	Stockton	67.09	88.46	72.98
6077003310	4191	San Joaquin	95210	Stockton	81.01	79.40	92.25
6077003311	3303	San Joaquin	95210	Stockton	77.59	79.97	94.11
6077003312	3220	San Joaquin	95207	Stockton	97.27	97.78	99.39
6077003313	2926	San Joaquin	95207	Stockton	89.82	92.78	97.46
6077003403	4586	San Joaquin	95210	Stockton	73.88	81.91	93.78
6077003404	5842	San Joaquin	95210	Stockton	90.07	55.15	93.22
6077003405	4214	San Joaquin	95210	Stockton	90.95	89.19	94.64
6077003406	3700	San Joaquin	95210	Stockton	94.52	95.71	98.88

Census Tract	Population	County	ZIP	City	Poverty Percentile	Housing Burden Percentile	Unemployment Percentile
6077003407	2914	San Joaquin	95210	Stockton	89.89	85.21	89.26
6077003409	4450	San Joaquin	95210	Stockton	80.70	52.67	88.68
6077003410	5778	San Joaquin	95210	Stockton	70.46	40.44	95.15
6077003500	20177	San Joaquin	95212	Stockton	50.70	38.06	72.98
6077003601	3453	San Joaquin	95215	Stockton	44.68	6.04	79.82
6077003700	3570	San Joaquin	95215	Stockton	88.17	21.74	99.59
6077003801	12552	San Joaquin	95206	Stockton	59.35	47.99	79.82
6077003802	6519	San Joaquin	95206	Stockton	58.89	26.43	84.73
6077003803	5281	San Joaquin	95231	French Camp	85.05	68.95	84.73
6077003900	1749	San Joaquin	95206	Stockton	80.41	NA	35.89
6077004203	3883	San Joaquin	95240	Lodi	83.93	89.19	76.86
6077004204	3006	San Joaquin	95240	Lodi	47.17	73.17	61.35
6077004302	5718	San Joaquin	95240	Lodi	71.68	34.16	75.99
6077004303	4610	San Joaquin	95242	Lodi	33.12	17.12	60.55
6077004305	5702	San Joaquin	95242	Lodi	34.38	20.17	64.04

Census Tract	Population	County	ZIP	City	Poverty Percentile	Housing Burden Percentile	Unemployment Percentile
6077004307	3753	San Joaquin	95240	Lodi	51.07	54.18	36.77
6077004308	3870	San Joaquin	95240	Lodi	72.96	88.36	87.12
6077004402	4998	San Joaquin	95240	Lodi	53.53	79.70	50.27
6077004403	4230	San Joaquin	95240	Lodi	97.95	85.42	98.11
6077004404	3670	San Joaquin	95240	Lodi	95.46	70.20	78.41
6077004501	2327	San Joaquin	95240	Lodi	65.13	24.99	82.80
6077004502	4450	San Joaquin	95240	Lodi	95.68	85.21	92.45
6077004902	6106	San Joaquin	95320	Escalon	51.93	20.17	74.37
6077005001	5569	San Joaquin	95366	Ripon	38.53	9.47	36.77
6077005106	6017	San Joaquin	95337	Manteca	44.17	11.34	78.74
6077005108	4463	San Joaquin	95336	Manteca	72.68	47.99	78.74
6077005109	4016	San Joaquin	95336	Manteca	81.22	56.50	98.45
6077005110	6488	San Joaquin	95336	Manteca	71.88	45.46	95.77
6077005113	6156	San Joaquin	95336	Manteca	39.28	33.56	47.67
6077005114	7721	San Joaquin	95337	Manteca	43.07	34.16	68.79

Census Tract	Population	County	ZIP	City	Poverty Percentile	Housing Burden Percentile	Unemployment Percentile
6077005119	6006	San Joaquin	95330	Lathrop	52.09	53.71	65.55
6077005122	4829	San Joaquin	95330	Lathrop	50.11	49.47	66.13
6077005123	4493	San Joaquin	95337	Manteca	49.94	8.63	89.57
6077005124	3438	San Joaquin	95336	Manteca	55.90	53.12	76.34
6077005125	1859	San Joaquin	95336	Manteca	56.42	23.51	72.98
6077005126	4131	San Joaquin	95336	Manteca	74.32	59.82	91.37
6077005127	5510	San Joaquin	95330	Lathrop	47.17	30.46	78.41
6077005129	3582	San Joaquin	95330	Lathrop	63.13	65.55	84.41
6077005130	3186	San Joaquin	95330	Lathrop	60.40	6.75	39.54
6077005131	4173	San Joaquin	95336	Manteca	63.76	14.52	52.82
6077005132	3257	San Joaquin	95337	Manteca	83.58	51.56	92.85
6077005133	4249	San Joaquin	95337	Manteca	47.00	0.77	80.71
6077005134	4743	San Joaquin	95336	Manteca	42.60	20.73	92.45
6077005135	5139	San Joaquin	95336	Manteca	37.07	10.35	59.12
6077005202	6765	San Joaquin	95304	Tracy	45.37	6.75	63.24

Census Tract	Population	County	ZIP	City	Poverty Percentile	Housing Burden Percentile	Unemployment Percentile
6077005206	16787	San Joaquin	95304	Tracy	28.98	15.99	80.26
6077005209	6858	San Joaquin	95377	Tracy	23.93	19.19	13.48
6077005302	6507	San Joaquin	95376	Tracy	63.33	33.07	70.57
6077005303	4694	San Joaquin	95376	Tracy	70.06	70.53	71.24
6077005305	6495	San Joaquin	95376	Tracy	49.79	52.30	85.16
6077005307	3214	San Joaquin	95376	Tracy	57.47	18.76	92.85
6077005308	4189	San Joaquin	95376	Tracy	37.07	27.61	95.49
6077005405	3417	San Joaquin	95376	Tracy	56.42	47.33	51.17
6077005406	3262	San Joaquin	95376	Tracy	64.10	24.49	77.40
6077005501	5268	San Joaquin	95304	Tracy	58.37	1.75	69.48
6099000202	6593	Stanislaus	95361	Oakdale	59.35	25.51	65.55
6099000203	8756	Stanislaus	95361	Oakdale	53.93	41.57	95.58
6099000301	1987	Stanislaus	95367	Riverbank	89.13	40.44	82.80
6099000302	2641	Stanislaus	95367	Riverbank	55.90	79.70	77.88
6099000303	5883	Stanislaus	95367	Riverbank	69.18	16.78	80.71
6099000304	5003	Stanislaus	95367	Riverbank	83.93	63.54	88.46
6099000402	10095	Stanislaus	95357	Modesto	21.91	16.35	53.51
6099000403	4317	Stanislaus	95357	Modesto	48.15	20.73	26.31
6099000404	5564	Stanislaus	95356	Modesto	59.86	80.81	66.75

Census Tract	Population	County	ZIP	City	Poverty Percentile	Housing Burden Percentile	Unemployment Percentile
6099000501	7165	Stanislaus	95356	Modesto	22.33	3.88	17.29
6099000503	4930	Stanislaus	95356	Modesto	47.00	41.57	57.71
6099000504	8692	Stanislaus	95356	Modesto	20.39	16.78	22.33
6099000505	4895	Stanislaus	95356	Modesto	58.48	46.43	72.43
6099000506	4295	Stanislaus	95356	Modesto	61.50	81.70	86.88
6099000510	8480	Stanislaus	95358	Modesto	57.23	35.52	62.53
6099000601	4647	Stanislaus	95358	Modesto	33.75	3.41	88.68
6099000602	2953	Stanislaus	95351	Modesto	53.78	76.43	95.15
6099000801	6216	Stanislaus	95350	Modesto	46.69	55.59	62.53
6099000803	4789	Stanislaus	95350	Modesto	94.90	75.53	82.80
6099000805	6188	Stanislaus	95350	Modesto	77.20	84.64	90.20
6099000806	4231	Stanislaus	95350	Modesto	38.88	41.03	85.16
6099000807	3694	Stanislaus	95356	Modesto	70.06	41.57	83.70
6099000905	6102	Stanislaus	95355	Modesto	37.95	24.03	84.41
6099000906	5810	Stanislaus	95355	Modesto	43.26	34.16	49.49
6099000907	3200	Stanislaus	95350	Modesto	34.58	12.86	35.89
6099000908	5093	Stanislaus	95355	Modesto	61.31	57.34	71.24
6099000909	4402	Stanislaus	95350	Modesto	78.63	87.19	87.69
6099000910	6585	Stanislaus	95355	Modesto	76.57	61.65	61.35
6099000911	4815	Stanislaus	95355	Modesto	62.95	7.25	70.00
6099000912	17129	Stanislaus	95355	Modesto	33.34	15.05	64.73
6099001001	6042	Stanislaus	95355	Modesto	54.42	64.39	75.52
6099001002	3153	Stanislaus	95350	Modesto	66.35	68.05	98.69
6099001100	3899	Stanislaus	95350	Modesto	69.30	76.12	74.93
6099001200	3623	Stanislaus	95354	Modesto	70.38	52.30	82.00
6099001300	5778	Stanislaus	95350	Modesto	47.00	40.44	74.37
6099001400	6430	Stanislaus	95350	Modesto	85.62	96.53	99.45

Census Tract	Population	County	ZIP	City	Poverty Percentile	Housing Burden Percentile	Unemployment Percentile
6099001500	6551	Stanislaus	95358	Modesto	78.63	62.74	98.88
6099001601	4803	Stanislaus	95351	Modesto	88.41	92.24	95.15
6099001603	5706	Stanislaus	95351	Modesto	96.22	65.14	99.80
6099001604	3861	Stanislaus	95351	Modesto	98.78	85.42	99.37
6099001700	2589	Stanislaus	95351	Modesto	98.29	62.07	96.54
6099001800	2196	Stanislaus	95354	Modesto	86.98	56.92	99.19
6099001900	5257	Stanislaus	95354	Modesto	59.35	49.47	87.12
6099002002	4527	Stanislaus	95357	Modesto	90.47	70.91	97.96
6099002004	6022	Stanislaus	95354	Modesto	92.46	71.63	88.22
6099002005	3631	Stanislaus	95354	Modesto	70.14	69.29	92.85
6099002006	4458	Stanislaus	95357	Modesto	60.30	58.01	91.95
6099002100	4165	Stanislaus	95354	Modesto	97.74	76.12	94.64
6099002200	6223	Stanislaus	95351	Modesto	97.20	98.74	94.89
6099002301	7841	Stanislaus	95351	Modesto	89.58	97.08	98.20
6099002302	4010	Stanislaus	95351	Modesto	95.31	89.40	98.62
6099002401	3567	Stanislaus	95358	Modesto	73.88	52.30	96.90
6099002402	5559	Stanislaus	95358	Modesto	98.93	77.86	98.83
6099002501	7036	Stanislaus	95358	Modesto	70.76	68.95	90.63
6099002503	4368	Stanislaus	95307	Ceres	88.49	49.89	87.69
6099002504	4422	Stanislaus	95307	Ceres	71.30	65.14	97.46
6099002602	4561	Stanislaus	95307	Ceres	82.83	77.60	99.53
6099002603	2906	Stanislaus	95307	Ceres	65.24	31.01	76.34
6099002604	4681	Stanislaus	95307	Ceres	95.02	82.18	98.11
6099002605	3855	Stanislaus	95307	Ceres	79.75	62.43	96.40
6099002701	3811	Stanislaus	95351	Modesto	57.23	51.56	75.99
6099002702	6940	Stanislaus	95351	Modesto	82.83	56.50	89.02
6099002802	6310	Stanislaus	95357	Modesto	72.96	29.06	98.55

Census Tract	Population	County	ZIP	City	Poverty Percentile	Housing Burden Percentile	Unemployment Percentile
6099002902	7609	Stanislaus	95326	Hughson	65.13	55.59	86.61
6099003001	9397	Stanislaus	95307	Ceres	40.62	3.63	42.25
6099003002	6818	Stanislaus	95307	Ceres	82.94	73.17	98.39
6099003100	4000	Stanislaus	95358	Modesto	76.57	44.26	89.26
6099003201	5055	Stanislaus	95363	Patterson	80.59	60.71	82.80
6099003202	16007	Stanislaus	95363	Patterson	58.48	35.52	77.40
6099003300	5077	Stanislaus	95363	Patterson	73.76	26.43	94.89
6099003400	1601	Stanislaus	95360	Newman	86.02	NA	70.00
6099003500	10720	Stanislaus	95360	Newman	67.83	50.33	93.65
6099003603	3952	Stanislaus	95380	Turlock	64.30	56.92	98.62
6099003605	8007	Stanislaus	95382	Turlock	55.73	39.08	77.40
6099003606	10838	Stanislaus	95382	Turlock	24.21	17.96	75.99
6099003700	4796	Stanislaus	95380	Turlock	66.81	47.99	70.57
6099003802	5860	Stanislaus	95380	Turlock	93.84	90.25	98.39
6099003803	3004	Stanislaus	95380	Turlock	75.46	82.48	93.65
6099003804	6450	Stanislaus	95380	Turlock	60.58	71.88	97.13
6099003805	2667	Stanislaus	95380	Turlock	58.89	74.03	64.73
6099003904	4374	Stanislaus	95380	Turlock	82.58	47.99	78.41
6099003905	3871	Stanislaus	95380	Turlock	19.95	8.35	58.46
6099003906	4880	Stanislaus	95380	Turlock	91.33	84.32	83.18
6099003907	7460	Stanislaus	95382	Turlock	35.25	15.99	30.90
6099003908	2226	Stanislaus	95380	Turlock	90.33	61.65	40.51
6099003909	5980	Stanislaus	95382	Turlock	46.47	31.01	89.57
6099004000	3822	Stanislaus	95358	Modesto	42.16	8.12	44.97
6107000201	9406	Tulare	93647	Orosi	97.03	62.43	91.56
6107000202	2663	Tulare	93646	Orange Cove	87.32	46.43	82.00
6107000301	6717	Tulare	93618	Dinuba	72.13	25.97	52.82

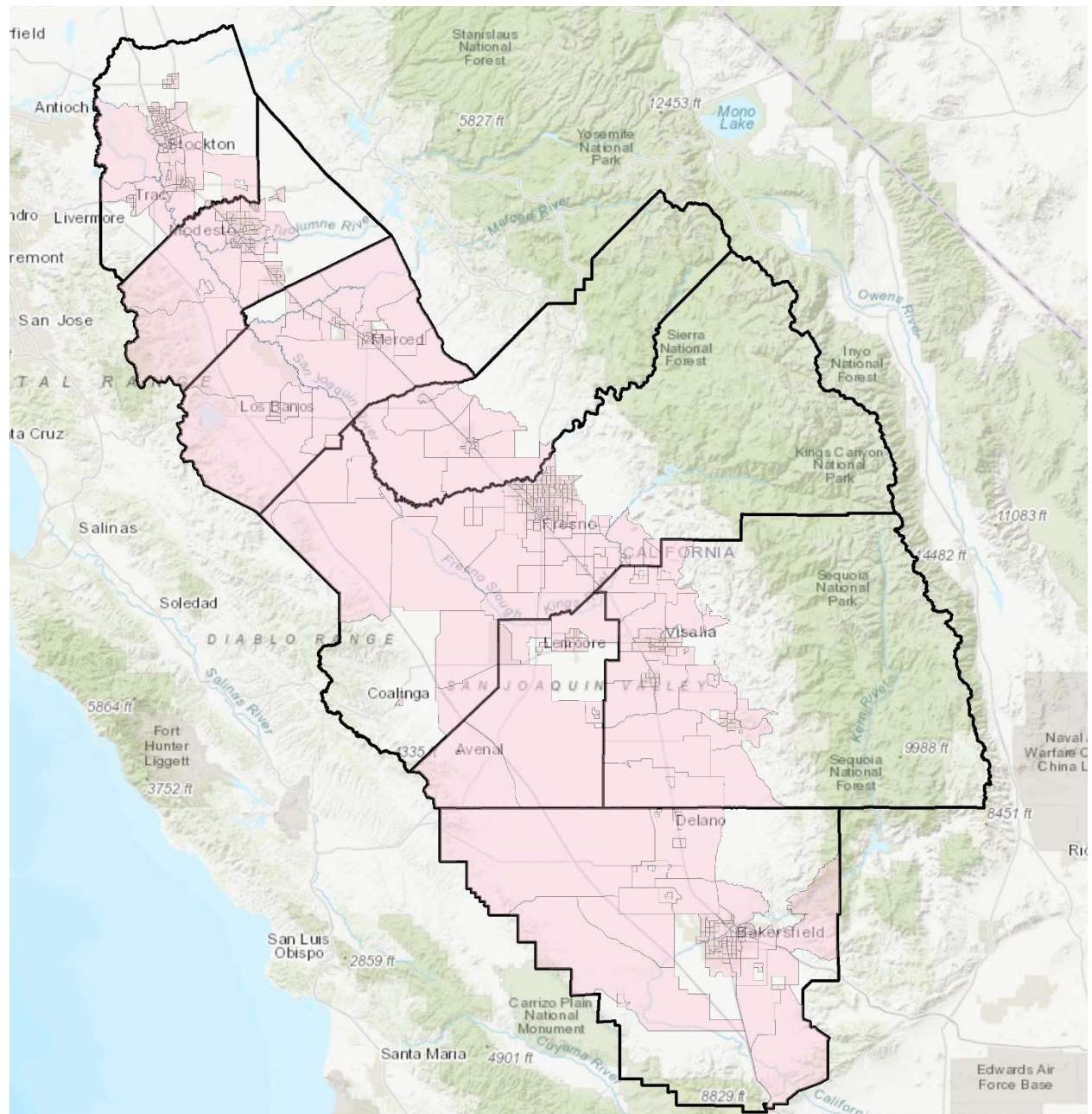
Census Tract	Population	County	ZIP	City	Poverty Percentile	Housing Burden Percentile	Unemployment Percentile
6107000302	3427	Tulare	93631	Kingsburg	98.33	57.34	91.95
6107000401	5193	Tulare	93618	Dinuba	86.90	44.81	83.70
6107000501	6712	Tulare	93618	Dinuba	96.90	82.48	81.61
6107000502	3405	Tulare	93618	Dinuba	86.25	24.99	81.11
6107000600	6200	Tulare	93615	Cutler	97.57	76.43	71.24
6107000701	2635	Tulare	93286	Woodlake	81.22	42.08	94.11
6107000800	7416	Tulare	93292	Visalia	94.34	39.08	83.70
6107000900	8171	Tulare	93291	Visalia	89.96	47.33	74.37
6107001003	19732	Tulare	93291	Visalia	46.83	7.25	15.84
6107001004	8235	Tulare	93291	Visalia	87.32	54.70	71.82
6107001005	2733	Tulare	93291	Visalia	35.01	35.16	30.90
6107001006	5765	Tulare	93291	Visalia	41.07	52.30	38.51
6107001100	6983	Tulare	93291	Visalia	98.93	87.07	98.69
6107001200	1337	Tulare	93291	Visalia	95.02	65.14	30.90
6107001302	8037	Tulare	93292	Visalia	71.16	54.18	29.83
6107001601	5587	Tulare	93223	Farmersville	93.48	25.97	95.09
6107001602	5745	Tulare	93292	Visalia	89.42	49.01	85.53
6107001701	6117	Tulare	93292	Visalia	92.07	91.95	50.27
6107001703	7149	Tulare	93292	Visalia	29.88	13.28	12.69
6107001704	6500	Tulare	93292	Visalia	49.33	24.03	66.13
6107001800	4689	Tulare	93277	Visalia	46.26	17.58	48.58
6107001901	3390	Tulare	93277	Visalia	51.73	15.45	9.37
6107001902	4016	Tulare	93277	Visalia	45.10	37.46	47.67
6107002002	4830	Tulare	93277	Visalia	66.22	30.01	61.91
6107002003	5663	Tulare	93277	Visalia	66.22	56.50	59.88
6107002004	4910	Tulare	93277	Visalia	42.29	67.68	33.82
6107002006	4378	Tulare	93277	Visalia	36.47	2.26	28.77

Census Tract	Population	County	ZIP	City	Poverty Percentile	Housing Burden Percentile	Unemployment Percentile
6107002007	8185	Tulare	93277	Visalia	45.56	46.84	35.89
6107002008	2769	Tulare	93277	Visalia	91.33	61.07	99.43
6107002009	4376	Tulare	93277	Visalia	64.51	44.81	62.53
6107002100	2499	Tulare	93274	Tulare	73.27	17.58	72.98
6107002202	5542	Tulare	93274	Tulare	98.58	82.18	73.59
6107002204	6126	Tulare	93274	Tulare	95.39	72.11	66.13
6107002302	4570	Tulare	93274	Tulare	50.70	22.66	41.43
6107002303	6447	Tulare	93274	Tulare	22.95	38.06	12.69
6107002304	1740	Tulare	93274	Tulare	76.72	61.65	59.12
6107002400	11470	Tulare	93274	Tulare	44.32	7.02	5.53
6107002500	3778	Tulare	93247	Lindsay	76.02	36.08	76.86
6107002601	4218	Tulare	93247	Lindsay	90.16	56.09	79.45
6107002800	3395	Tulare	93247	Lindsay	98.19	77.35	93.43
6107002901	3729	Tulare	93274	Tulare	95.46	65.14	80.71
6107002903	5097	Tulare	93274	Tulare	67.66	39.87	46.86
6107002904	5002	Tulare	93274	Tulare	63.33	38.46	66.75
6107003001	4652	Tulare	93274	Tulare	95.75	16.35	88.22
6107003002	3519	Tulare	93274	Tulare	87.08	68.05	80.26
6107003100	3591	Tulare	93274	Tulare	90.33	9.47	67.42
6107003200	6446	Tulare	93272	Tipton	98.06	13.59	72.43
6107003300	7837	Tulare	93267	Strathmore	89.01	67.35	83.70
6107003400	7016	Tulare	93257	Porterville	91.90	72.11	71.24
6107003502	10796	Tulare	93257	Porterville	67.42	9.47	51.87
6107003602	7114	Tulare	93257	Porterville	81.48	38.46	55.30
6107003700	5931	Tulare	93257	Porterville	90.07	59.39	78.41
6107003802	4123	Tulare	93257	Porterville	99.47	88.58	99.26
6107003901	7184	Tulare	93257	Porterville	92.61	41.57	92.25

Census Tract	Population	County	ZIP	City	Poverty Percentile	Housing Burden Percentile	Unemployment Percentile
6107003902	5847	Tulare	93257	Porterville	85.91	62.43	88.22
6107004101	9670	Tulare	93257	Porterville	96.59	49.01	77.40
6107004102	2028	Tulare	93257	Porterville	90.23	31.42	96.14
6107004200	6529	Tulare	93256	Pixley	99.17	55.15	80.71
6107004300	7682	Tulare	93219	Earlimart	96.59	65.92	97.33
6107004400	7470	Tulare	93219	Earlimart	99.37	62.07	95.33
6107004500	6628	Tulare	93207	California Hot Springs	89.82	67.03	74.37

Appendix B:

Initial Map of Communities Recommended for Additional
Clean Air Resources under AB 617



Appendix C:

Community Self-Recommendations Received

Name and Affiliation	Community	Source	Date Received
Nadine Spertus Public	Modesto	ARB CAPP Concept Paper Comment Log	03/08/2018
Saul Ruiz Martines Los Residentes Unidos de Lost Hills	Lost Hills	Nomination Letter	03/28/2018
Ara Marderosian Sequoia ForestKeeper	Sierra Forest	Nomination Letter	11/21/2017
Mr. Juan Flores Center on Race Poverty and the Environment	Delano	ARB Board Meeting	03/2018
	Shafter		
	Arvin		
	Bakersfield		
Nikita Daryanani Leadership Counsel for Justice and Accountability / California Environmental Justice Alliance	Impacted communities in San Joaquin Valley	ARB Board Meeting	
Nikita Daryanani Leadership Counsel for Justice and Accountability / Center on Race Poverty and the Environment	Shafter	ARB Concept Paper Docket Comment Number 18	04/13/2018
	Calwa		
	Malaga		