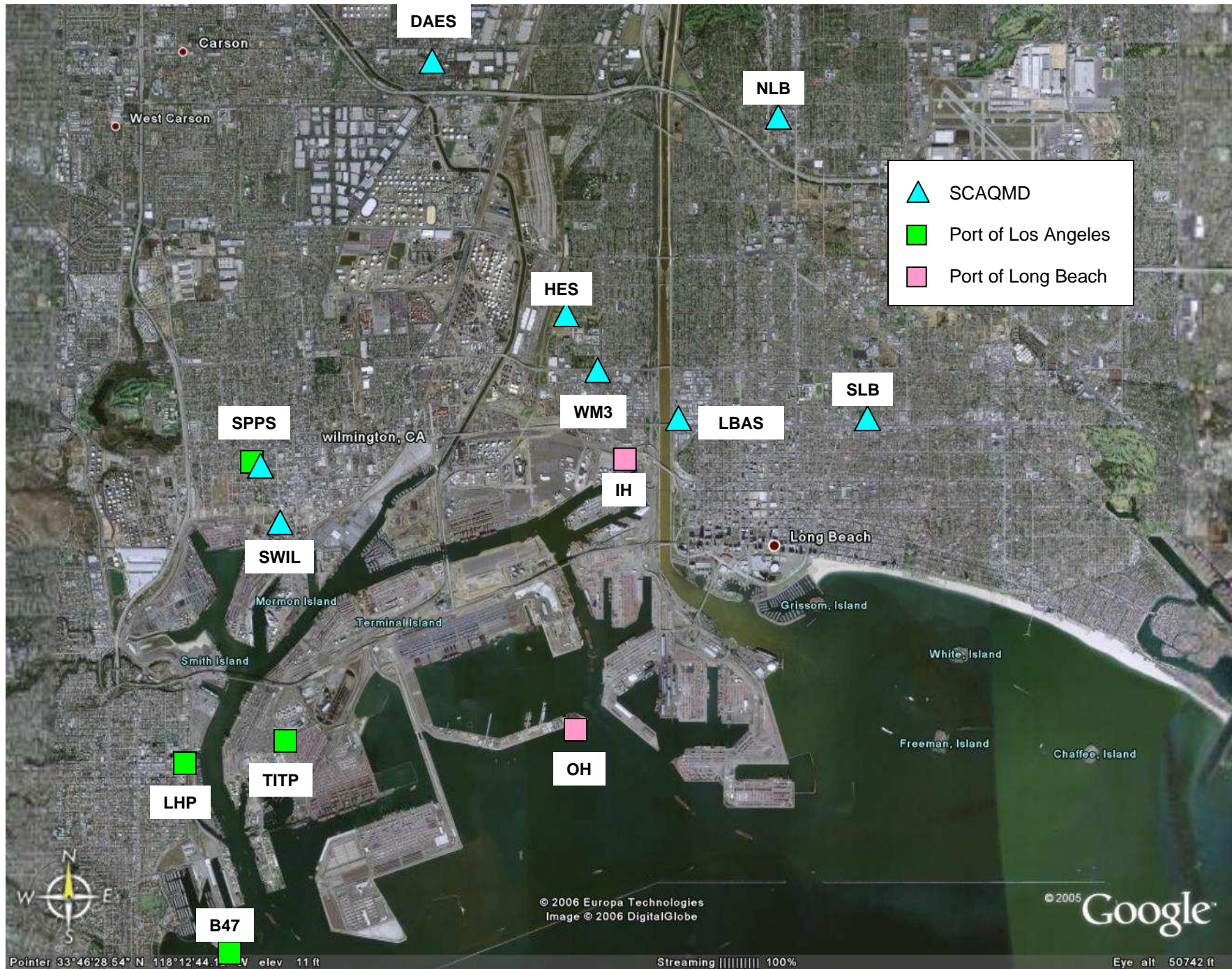


**Additional Monitoring Efforts
in the Area
that are Concurrent with
CARB's Harbor Communities
Monitoring Study**

Harbor Communities Monitoring Meeting

August 1, 2007

Wilmington Senior Center



Monitoring on Ports

Port	Site	EC	PAH	PM2.5	PM10	UFPC	Gas*	Met
LA	B47	X	+	X	+	+	+	X
	TITP	X	+	X		+	+	X
	LHP	X	+	X		+	+	X
	SPPS	X ¹	+	X	X	+	+	X
LB	OH			X	X		X	X
	IH			X	X		X	X
NOAA	6 sites							wind

* gaseous pollutants: O₃, NO_x, SO₂, CO; + in process of being added;

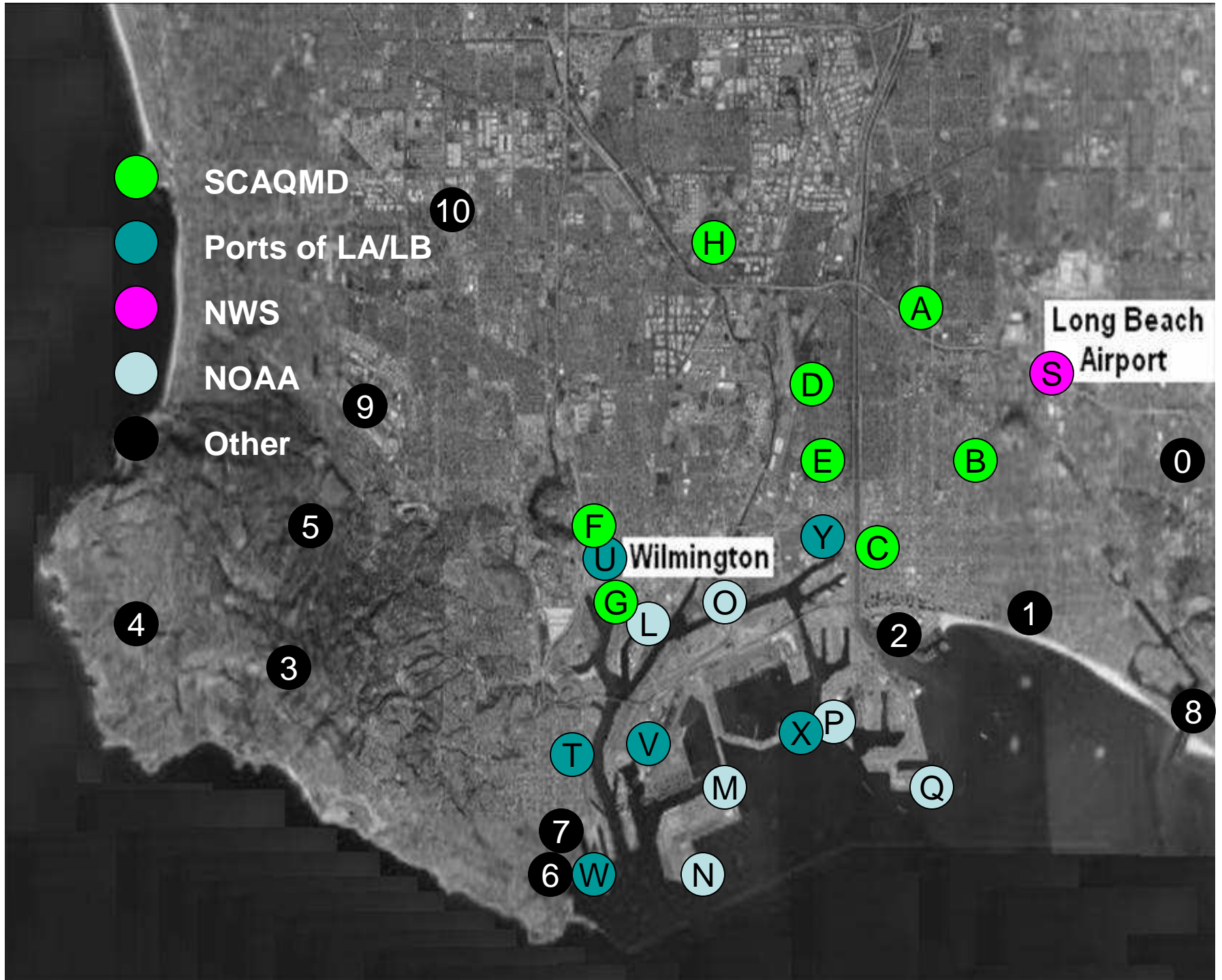
¹ aethalometer being added

Port Data on Web

- **Port of Long Beach (AQ & Met) -**
http://www.polb.com/environment/air_quality/air_monitoring.asp
- **Port of Los Angeles (AQ) -**
http://www.portoflosangeles.org/environment_aqm.htm
- **NOAA-PORTS (Met) -**
<http://tidesandcurrents.noaa.gov/lports/lports.shtml?port=ll>

Surface Meteorological Data being Collected for the HCMS

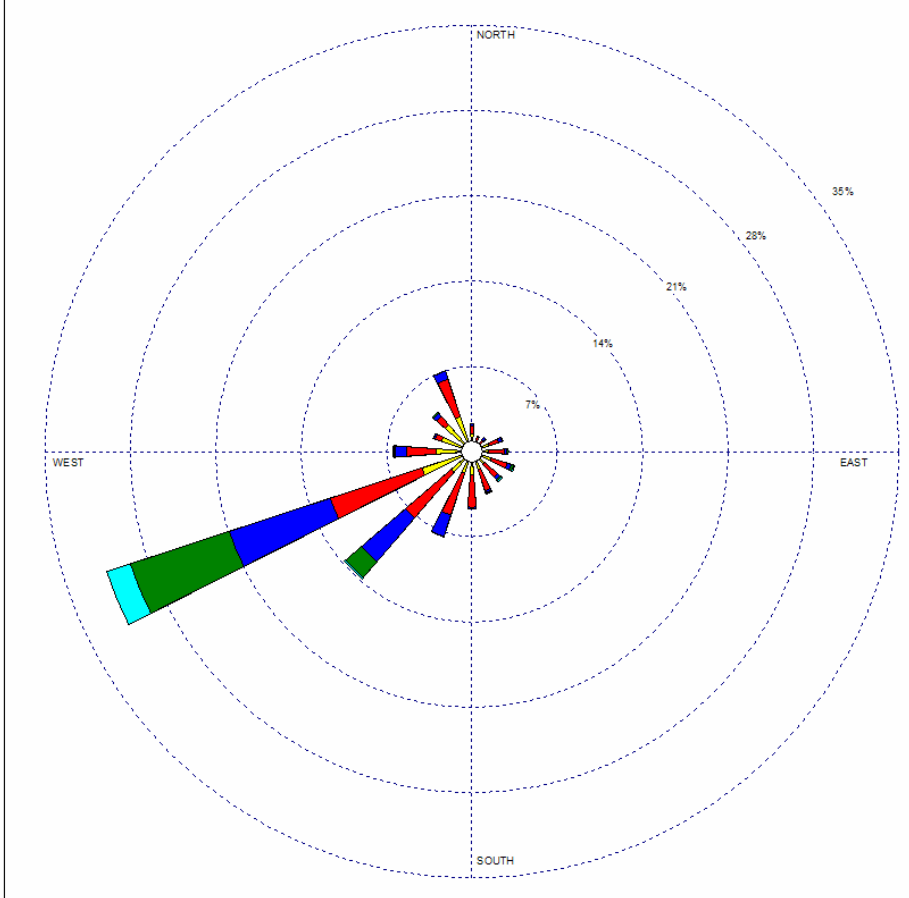
Site ID	Site Name	Site ID	Site Name
A	North Long Beach (SCAQMD)	U	Wilmington-SPP School (PoLA)
B	South Long Beach (SCAQMD)	V	Terminal Island TP (PoLA)
C	Long Beach–Anaheim St (SCAQMD)	W	Berth 47 (PoLA)
D	Hudson Elem. School (SCAQMD)	X	Outer Harbor (PoLB)
E	Wilmington-MATES III (SCAQMD)	Y	Inner Harbor (PoLB)
F	Wilmington-SPPS (SCAQMD)	0	Long Beach-KE6JDC (CWOP)
G	So. Wilmington-HB&F (SCAQMD)	1	Long Beach-CW6147 (CWOP)
H	Carson- Del Amo ES (SCAQMD)	2	Long Beach Aquarium (CWOP)
L	Berth 161 (NOAA)	3	Palos Verdes (CWOP)
M	Pier 400 (NOAA)	4	Rancho Palos Verdes (CWOP)
N	Angel's Gate (NOAA)	5	Rolling Hills Estates (CWOP)
O	Badger Ave. Bridge (NOAA)	6	San Pedro (CWOP)
P	Pier F (NOAA)	7	San Pedro #2 (CWOP)
Q	Pier J (NOAA)	8	Seal Beach #2 (CWOP)
S	Long Beach Airport-KLGB (NWS)	9	Zamperini AP-KTOA (NWS)
T	San Pedro-LHP (PoLA)	10	Torrance #2 (CWOP)



Complex Wind Patterns Indicated by Wind Roses

PoLA-Berth47 (W) 2005 PoLA-SPPS (U)

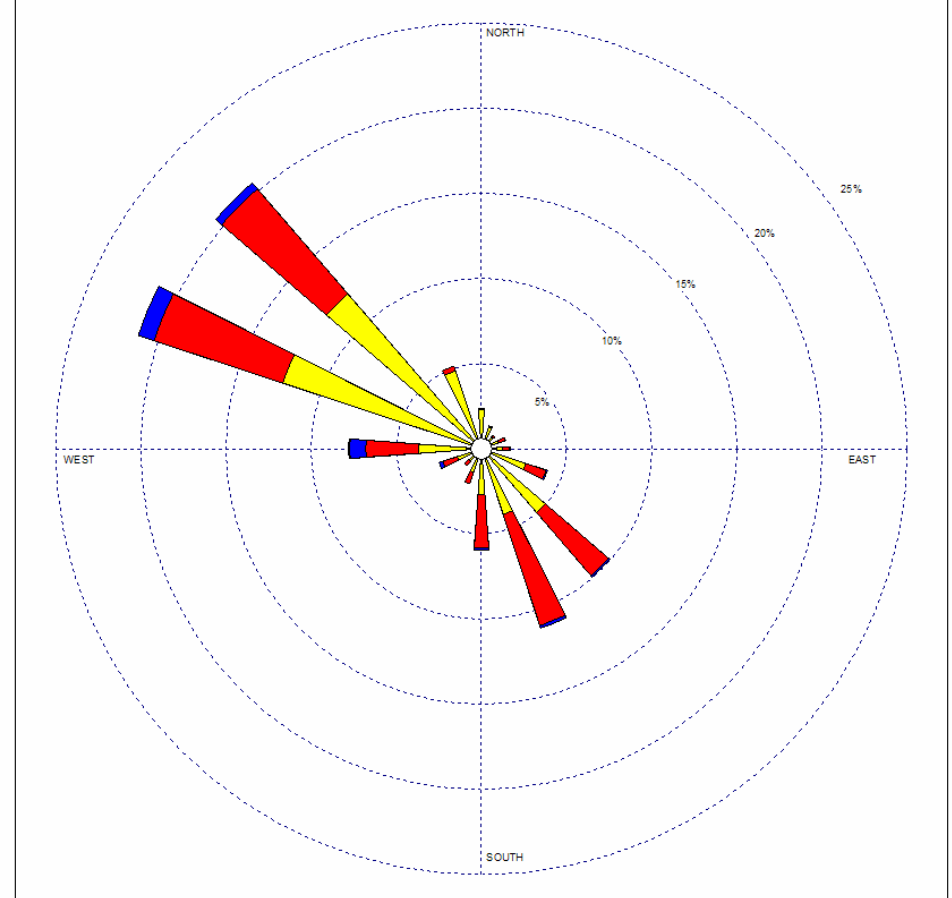
WIND ROSE PLOT
Wind Rose - POLA - Berth 47 Station - February thru December 2005



Wind Speed (m/s) > 5.00 6.00 - 9.00 4.00 - 6.00 2.00 - 4.00 0.00 - 2.00 0.20 - 0.00	MODELER Joel Torcolini	DATE 3/8/2006	COMPANY NAME SAIC
	DISPLAY Wind Speed	UNIT m/s	COMMENTS
	AVG. WIND SPEED 3.52 m/s	CALM WINDS 0.00%	PROJECT/PLOT NO.
	Direction (blowing from)	PLOT YEAR-DATE-TIME 2005 Jan 1 - Dec 31 Midnight - 11 PM	PROJECT/PLOT NO.

WRPLOT V1ew 3.5 by Lakes Environmental Software - www.lakes-environmental.com

WIND ROSE PLOT
Wind Rose - POLA - SPPS Station - February thru December 2005



Wind Speed (m/s) > 5.00 6.00 - 9.00 4.00 - 6.00 2.00 - 4.00 0.00 - 2.00 0.20 - 0.00	MODELER Joel Torcolini	DATE 3/8/2006	COMPANY NAME SAIC
	DISPLAY Wind Speed	UNIT m/s	COMMENTS
	AVG. WIND SPEED 1.91 m/s	CALM WINDS 0.01%	PROJECT/PLOT NO.
	Direction (blowing from)	PLOT YEAR-DATE-TIME 2005 Jan 1 - Dec 31 Midnight - 11 PM	PROJECT/PLOT NO.

WRPLOT V1ew 3.5 by Lakes Environmental Software - www.lakes-environmental.com

PoLB-IH (Y)

Mar07

PoLB-OH (X)

