

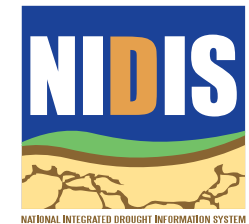
# Drought & Health Engagement

ADVANCING DROUGHT & HEALTH PLANNING  
ACROSS THE U.S.A.

---



Nicole A. Wall, Research and Outreach Specialist  
February 4, 2019  
nwall2@unl.edu



# How Local Voices are Heard

## IAP2 Spectrum of Public Participation



International Association  
for Public Participation

*Increasing Level of Public Impact*

**Public  
participation  
goal**

### **Inform**

To provide the public with balanced and objective information to assist them in understanding the problem, alternatives, opportunities and/or solutions.

### **Consult**

To obtain public feedback on analysis, alternatives and/or decisions.

### **Involve**

To work directly with the public throughout the process to ensure that public concerns and aspirations are consistently understood and considered.

### **Collaborate**

To partner with the public in each aspect of the decision including the development of alternatives and the identification of the preferred solution.

### **Empower**

To place final decision-making in the hands of the public.

# Mission of Stakeholder Engagement

---

**\*Create an environment so that people are empowered to connect with each other. One that is lasting, collaborative, and has communication\***



# Engagement Strategies



- Emergency Ops. Command Structure - Comm. Across Multiple Agencies
- Partnering w/ regional folks to produce newsletters, share communication leadership
- + Facebook / Social media channels
- MAX.gov (~~ETHA~~)
- Ez Central Repository for plans
- Uniform / Agreed-on information / sources / DATA
  - USDM
  - SNOWPACK
- Citizen Science
  - Tracking / Comm. Drought
    - Monthly US Central / Midwest Climate & Drought webinar
      - current conditions
      - seasonal outlook
  - Ag focus
- Drought 101 (Basic)



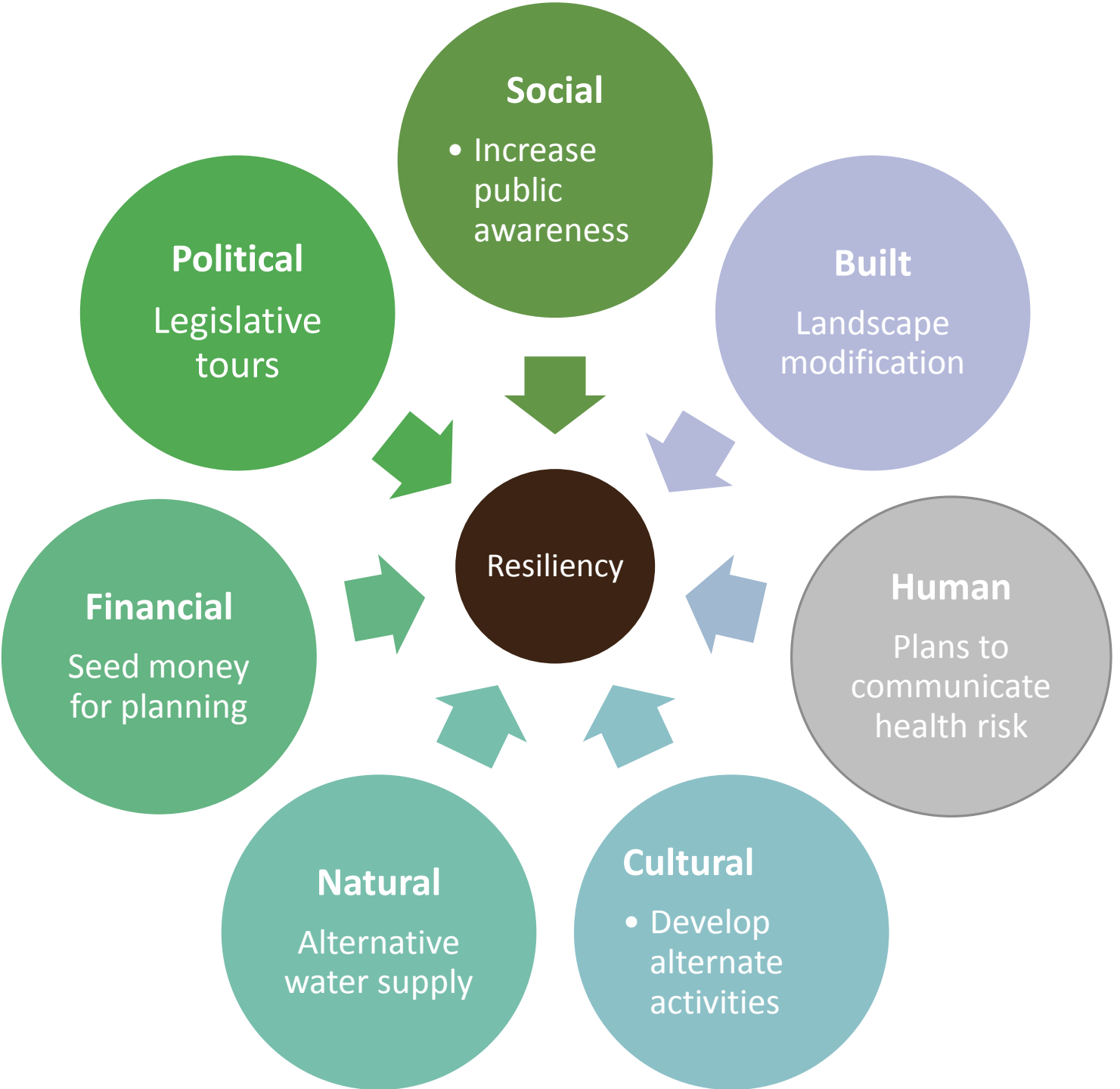


# Contexts & Opportunities for Drought Planning at Different Levels of Government

|                               | Monitoring | Water policy & planning | Health planning | Emergency Response & Multi-hazard plans |
|-------------------------------|------------|-------------------------|-----------------|---|
| Federal                       |            |                         |                 |   |
| State                         |            |                         |                 |   |
| Sub-state                     |            |                         |                 |   |
| Local<br>(county & municipal) |            |                         |                 |   |

**Tribal**  
Indian tribes are sovereign nations, often with tribal agencies that manage water, land and other resources.

# Drought Planning Strategies: CCF Model

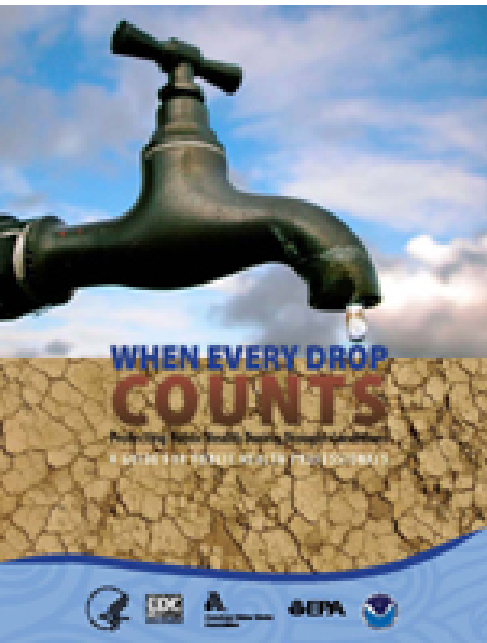


# Goal for Today's Working Session

---

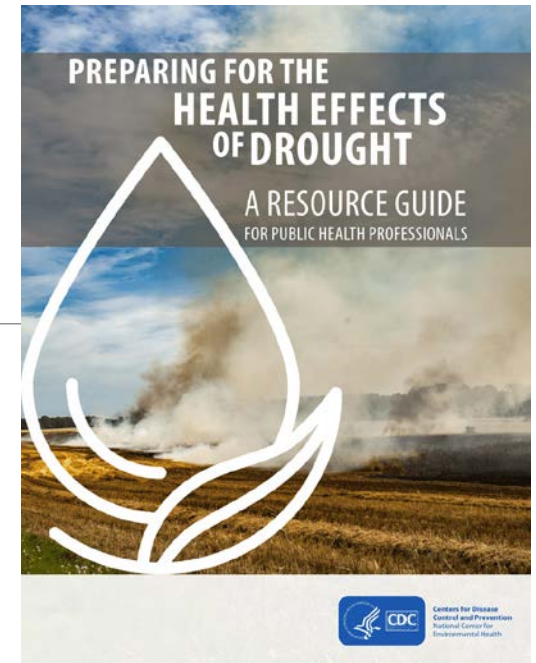
1. To be introduced to the new CDC's Preparing for the Health Effects of Drought: A Resource Guide for Public Health Officials and to explore how it might use for your health department or jurisdiction
2. For the organizers to better understand what your agency and your stakeholders would find useful in terms of future drought planning resources related to health





# Working Agenda

- **Local Voices: Mariposa and Tulare Counties Drought Response and Recovery Efforts**
- **CDC Data Resources Guide Overview**
- **Module 1 Overview**
- **Facilitated Discussion**
- **Module 5 Overview & Discussion**
- **Modules 2 & 3 Overview**
- **Facilitated Discussion (Lessons Learned, Infographic Resources)**
- **Workshop Closing (Post Evaluation and Moving Forward)**



## **Module 1: Conducting or Contributing to a Hazard and Vulnerability Assessment**

### **Considerations:**

- The role of data and impact monitoring (Module 4)  
What is most suitable or needed? (Worksheet 1)
- What steps are recommended to conduct a Hazard and Vulnerability assessment and are they applicable?  
How can they be adapted to better suit your needs?  
(Worksheet 2)

**Questions: Who and what is the most vulnerable in your community or jurisdiction related to drought? How would you start this process? Who should be involved in your hazard and vulnerability assessment planning? What is needed to help you start this process? How can you obtain these resources? (later discussion, module 5)**

## Module 5:

### How to find funding and resources

#### Considerations:

- Develop a needs based fundraising plan
- Research and identify funders

**Questions: What resources do you have to help integrate drought into your health activities? What resources are needed? How can you better identify these resource needs?**





## **Modules 2 &3 :** **Communications and Collaborations**

### **Considerations for Collaborations:**

- Getting involved in a regional drought planning task force
- Get involved early and explore the integration of health into larger planning efforts
- Be an information provider for drought and health
- Work with others who are interested and/or active in these efforts
- Build off your response efforts for future planning and mitigation efforts
- Educate and collaborate outside of your “comfort” zone

**Questions: What did you hear from the local “testimonies” related to drought and health help you better understand the role of communications and collaborations? What other resources are available to help you in these processes? (CDC and others?)**

## **Final Activities:** Post Evaluation & Moving Forward

### **Before Leaving:**

- Fill out the post evaluation so we can better understand your future needs and how to better serve other regions of stakeholders

**Questions: Please take a notecard and describe at least two things you plan to do after leaving this drought and health workshop. For those on the web cast, you can type them in the chat box.**

# OUR PARTNERS

