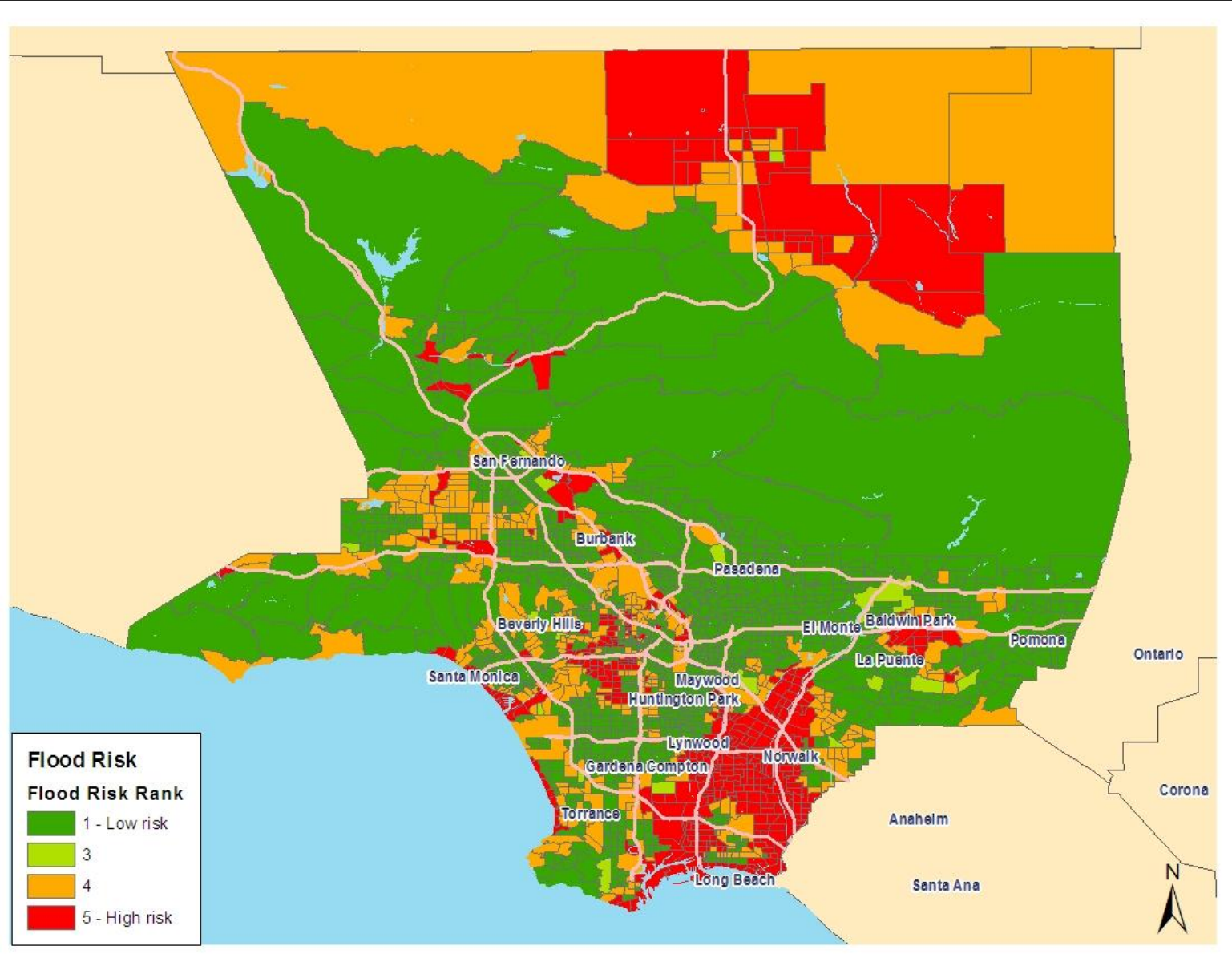


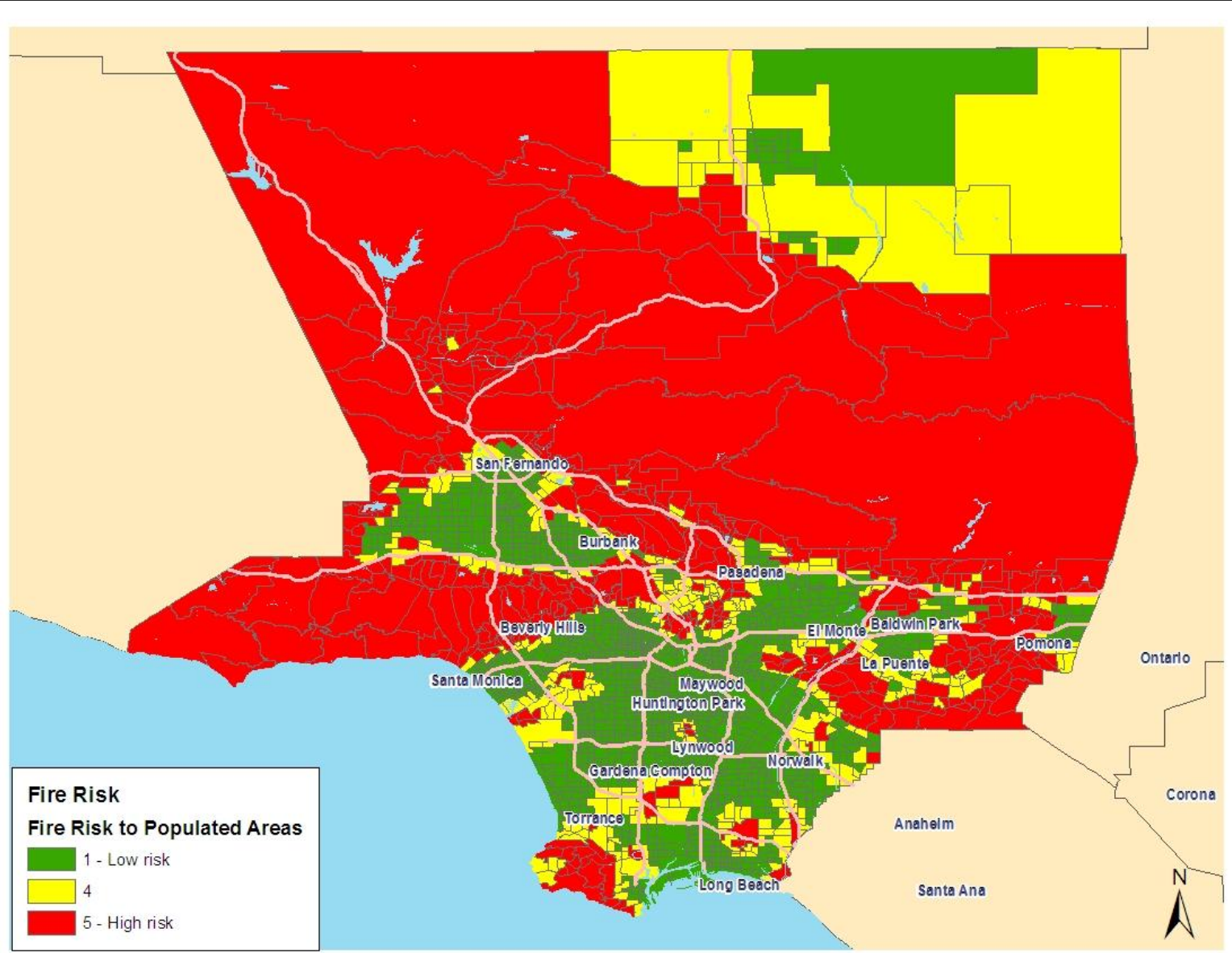
LA County Climate Change Vulnerability

RANK: Average FEMA flood risk



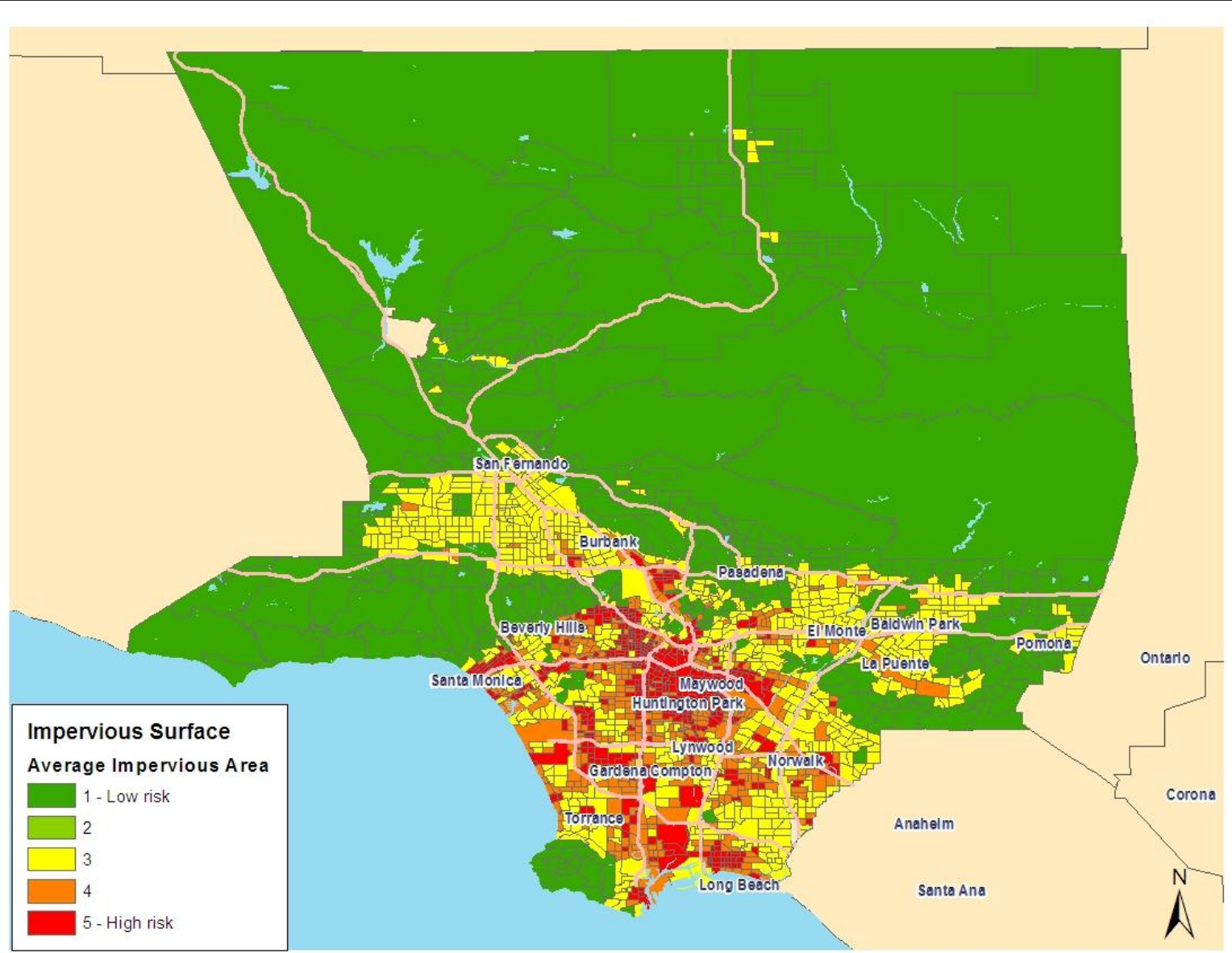
LA County Climate Change Vulnerability

RANK: Average risk of wildfire-urban interface



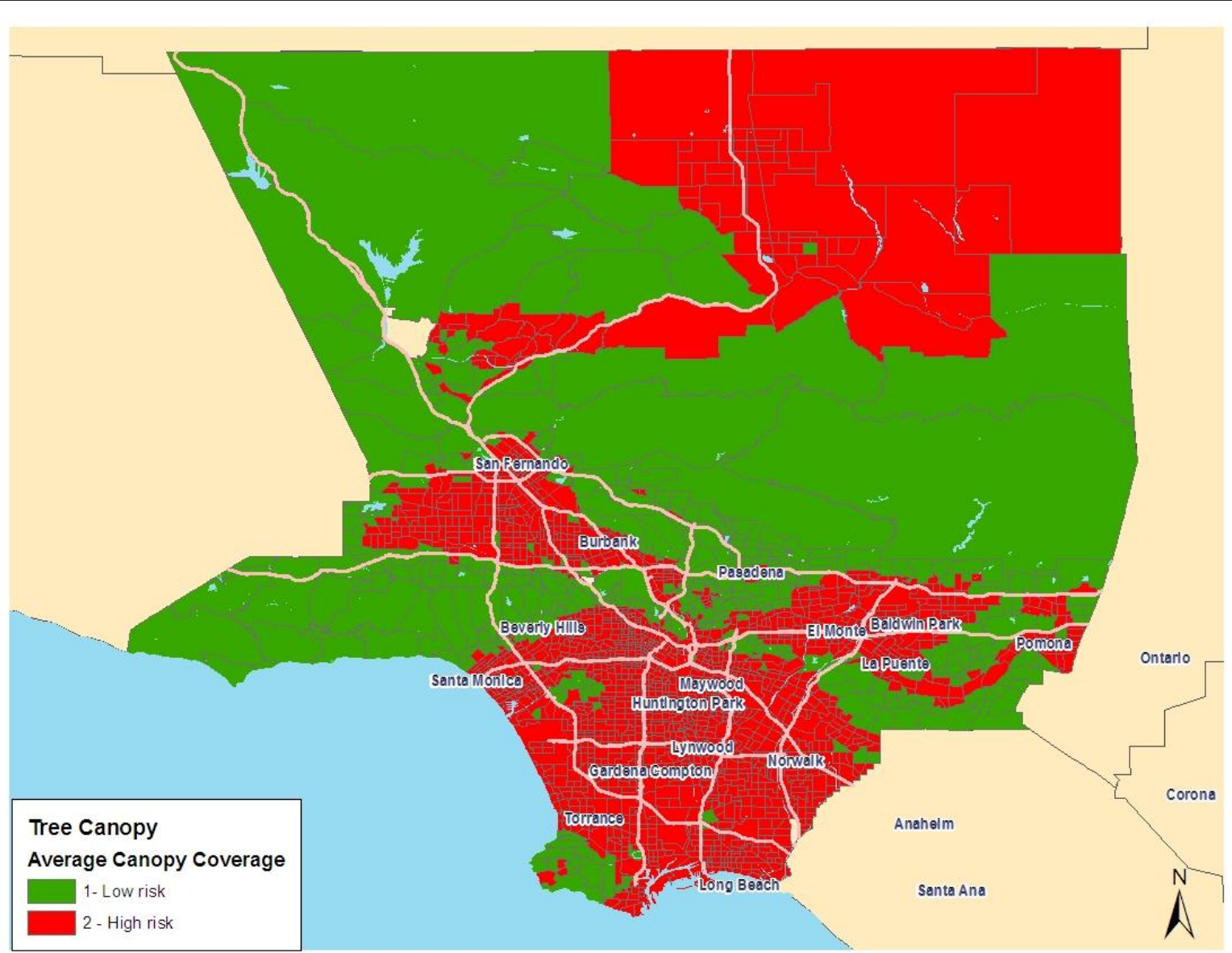
LA County Climate Change Vulnerability

RANK: Average coverage of impervious surfaces



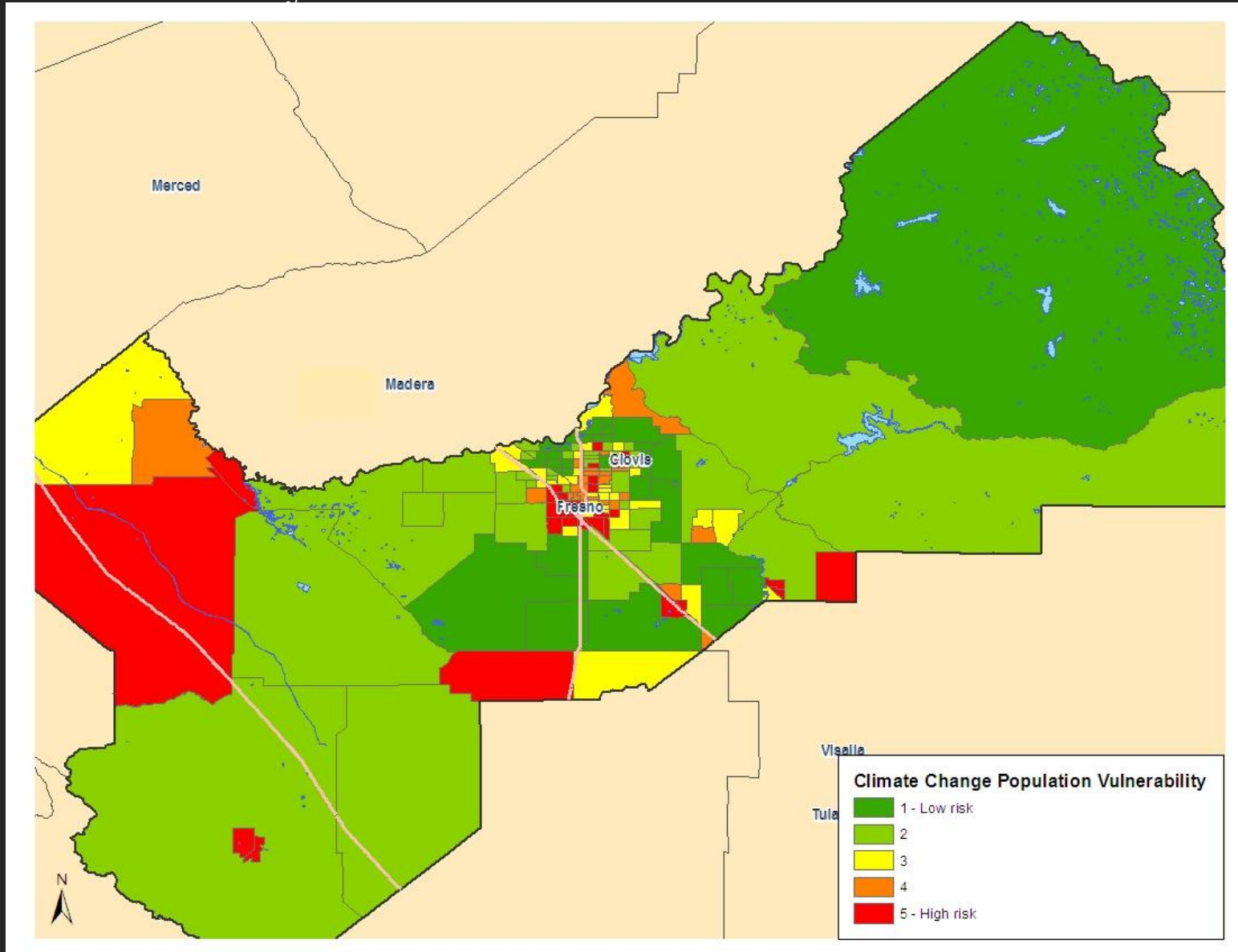
LA County Climate Change Vulnerability

RANK: Average tree canopy coverage



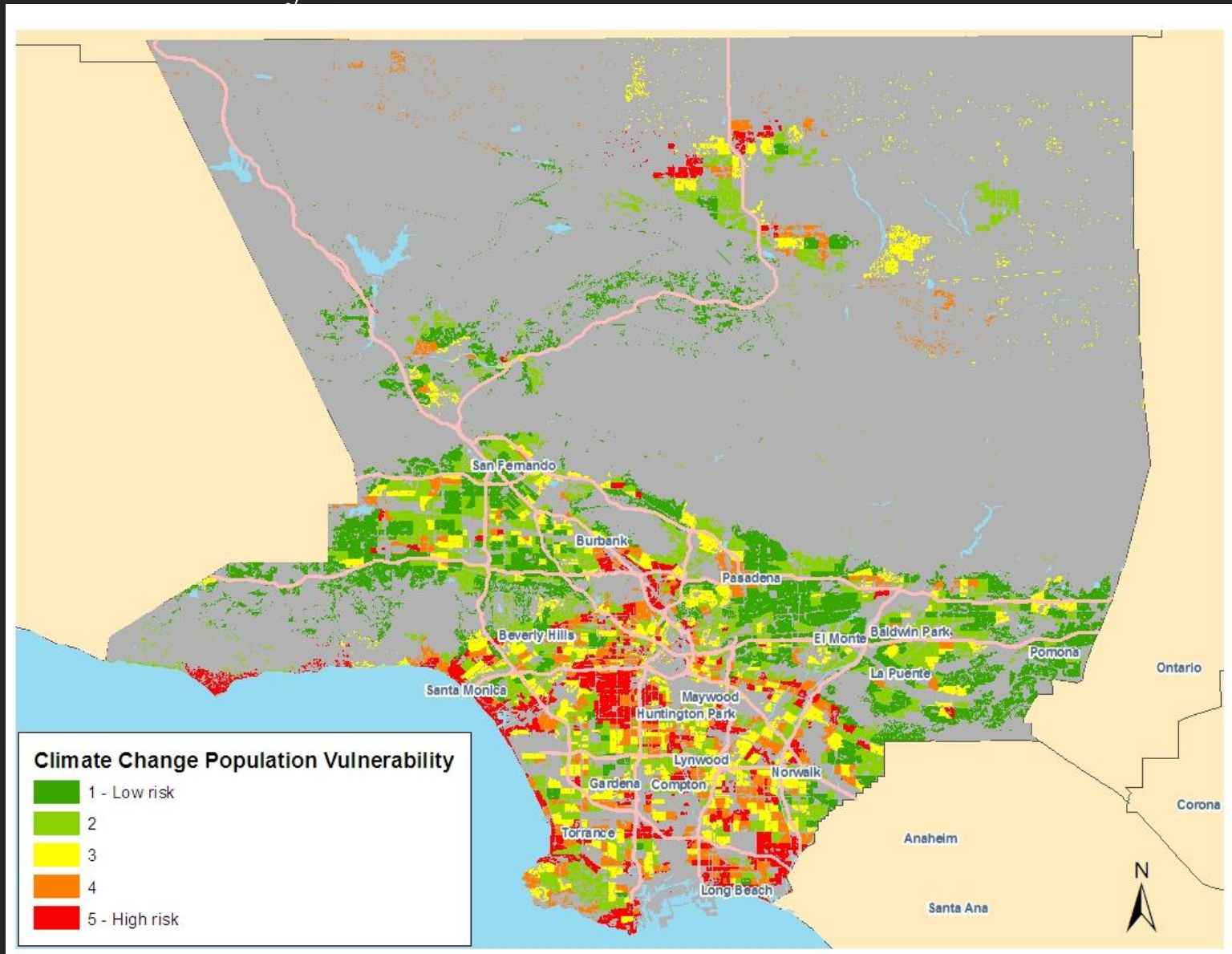
Fresno County Climate Change Vulnerability

Final Vulnerability Scores



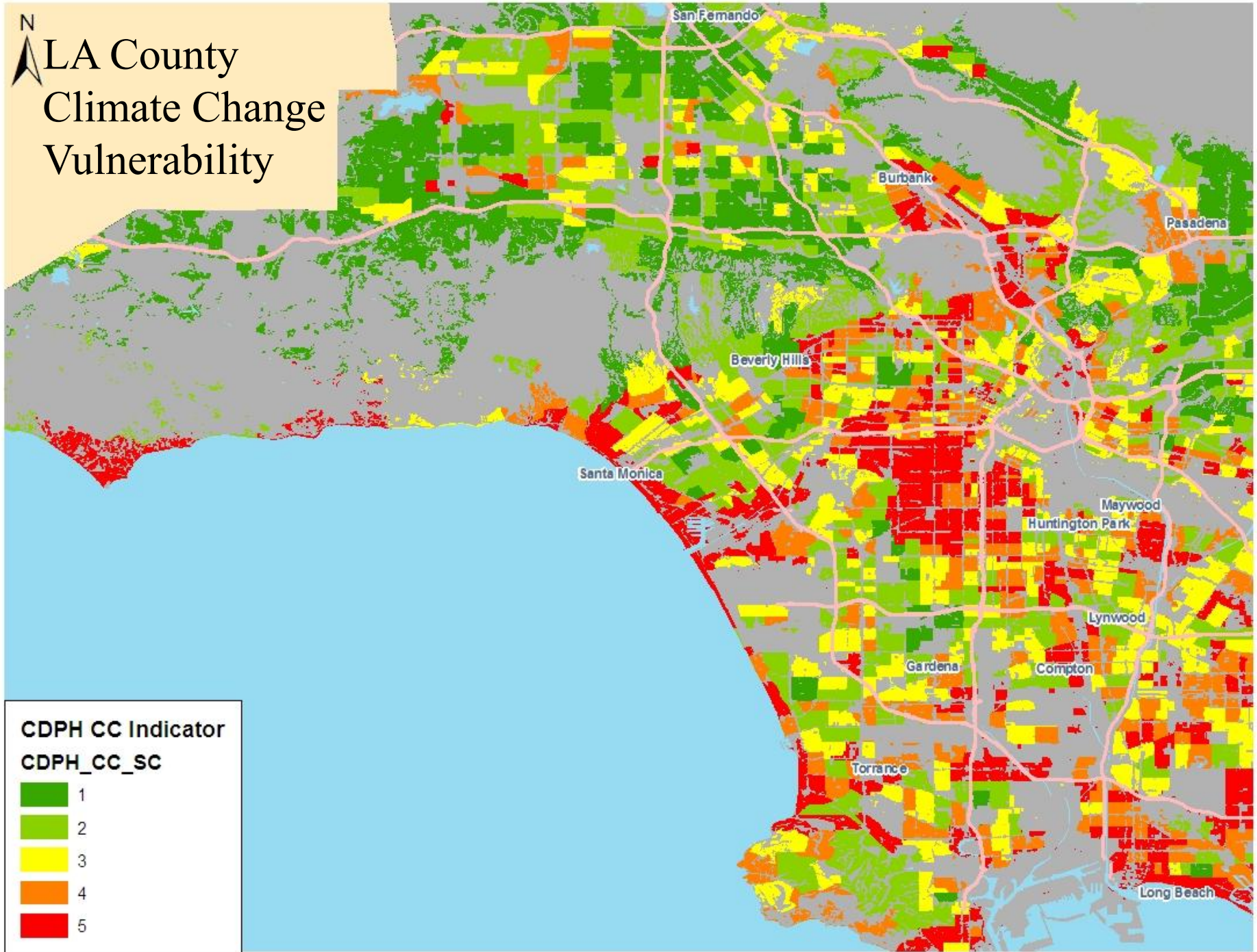
LA County Climate Change Vulnerability

Final Vulnerability Scores











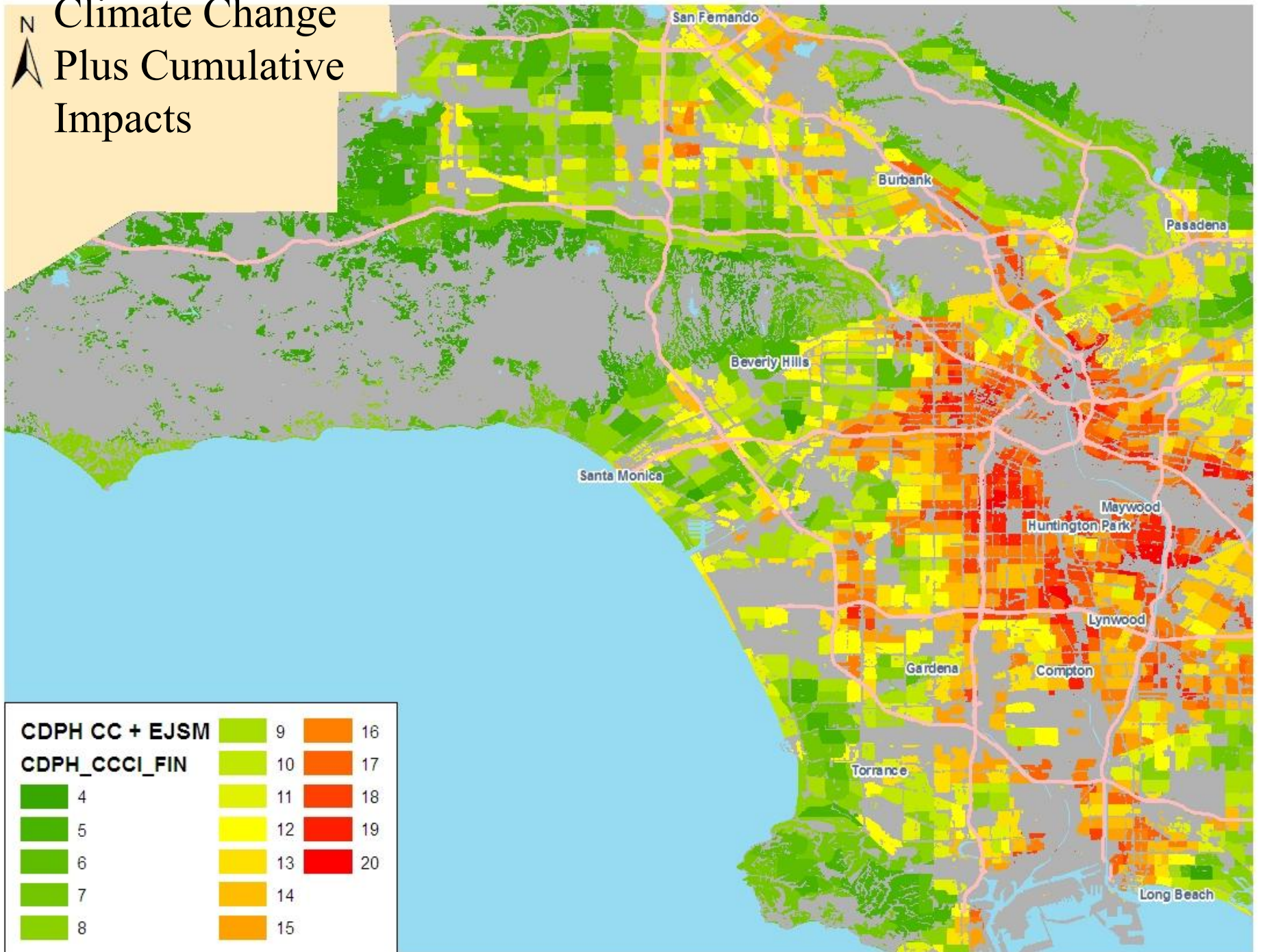
LA County Climate Change Vulnerability



CDPH CC Indicator
CDPH_CC_SC

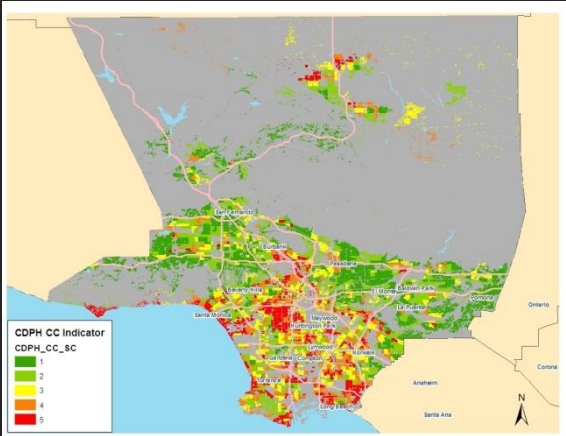
	1
	2
	3
	4
	5


**Climate Change
Plus Cumulative
Impacts**

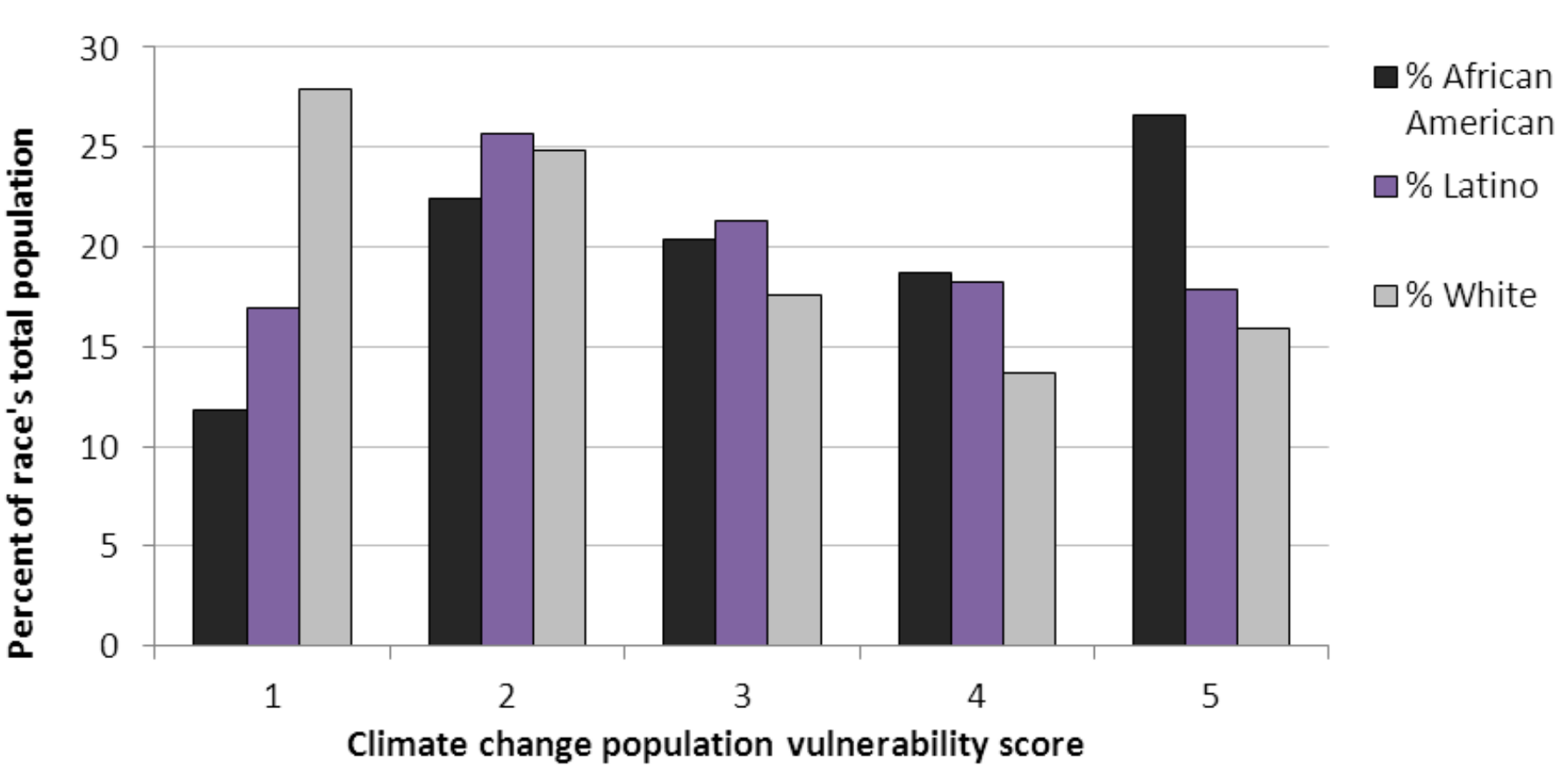


CDPH CC + EJSM			
	9		16
CDPH_CCCI_FIN			
	10		17
	11		18
	12		19
	13		20
	14		
	15		

46% of African Americans and 36% of Latinos reside in the two highest risk categories compared to 30% of whites

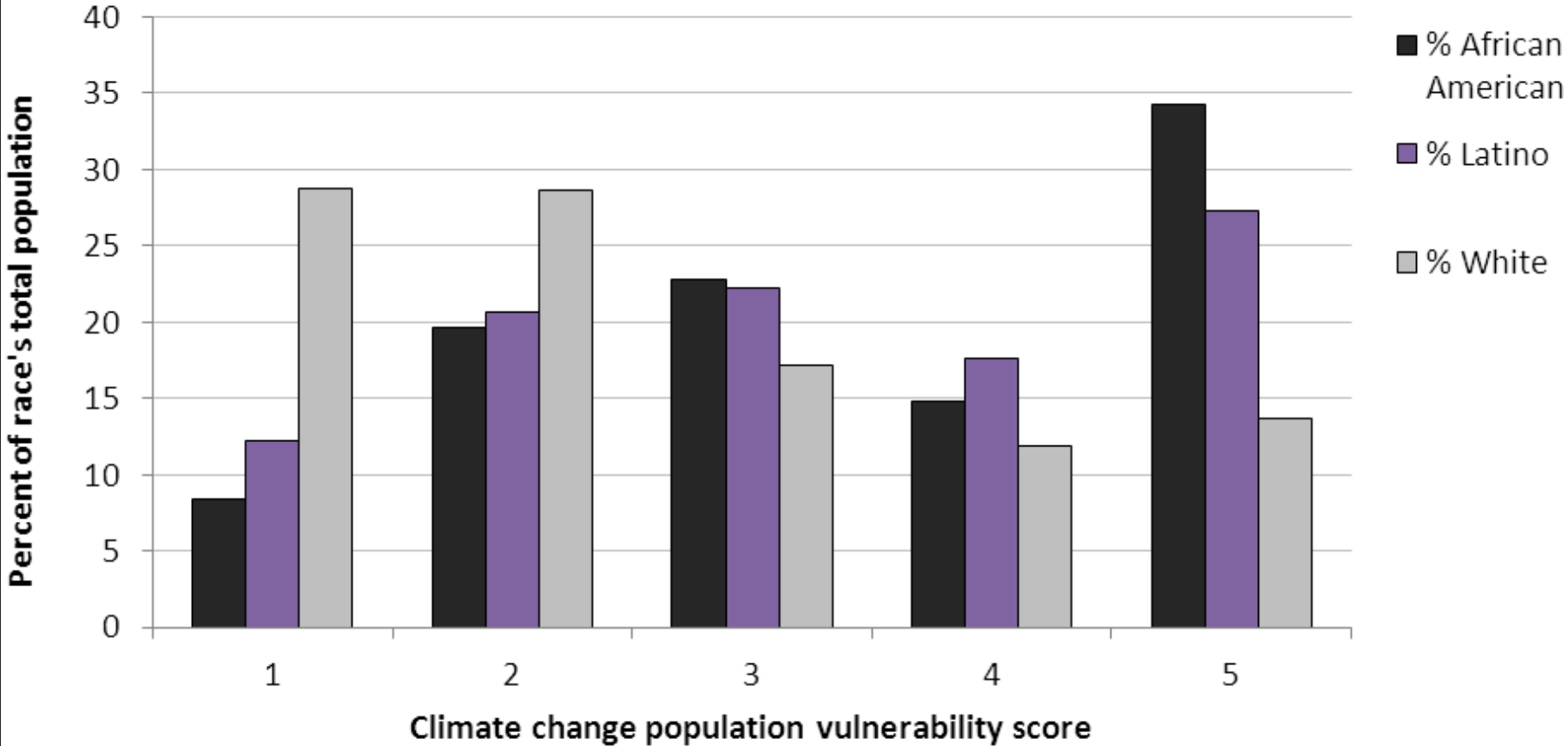
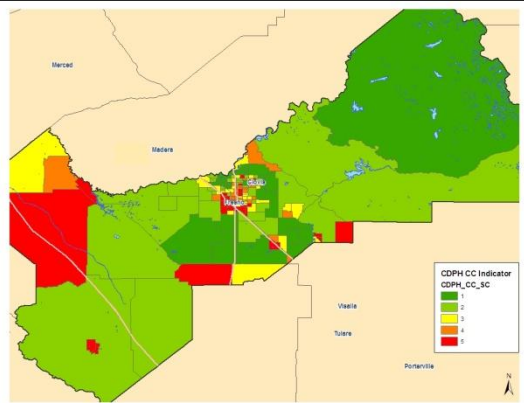


Los Angeles County

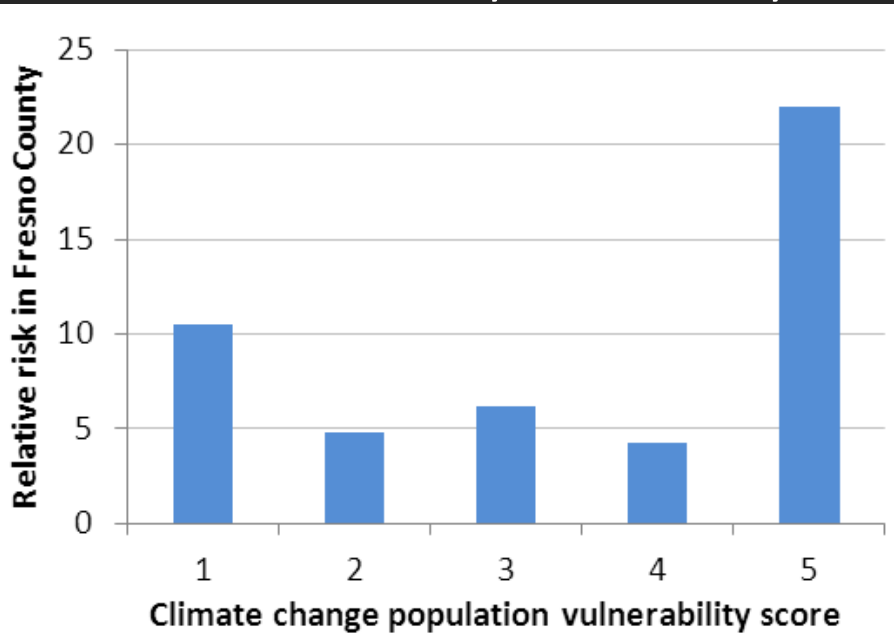


49% of African Americans and 45% of Latinos reside in the two highest risk categories compared to 26% of whites

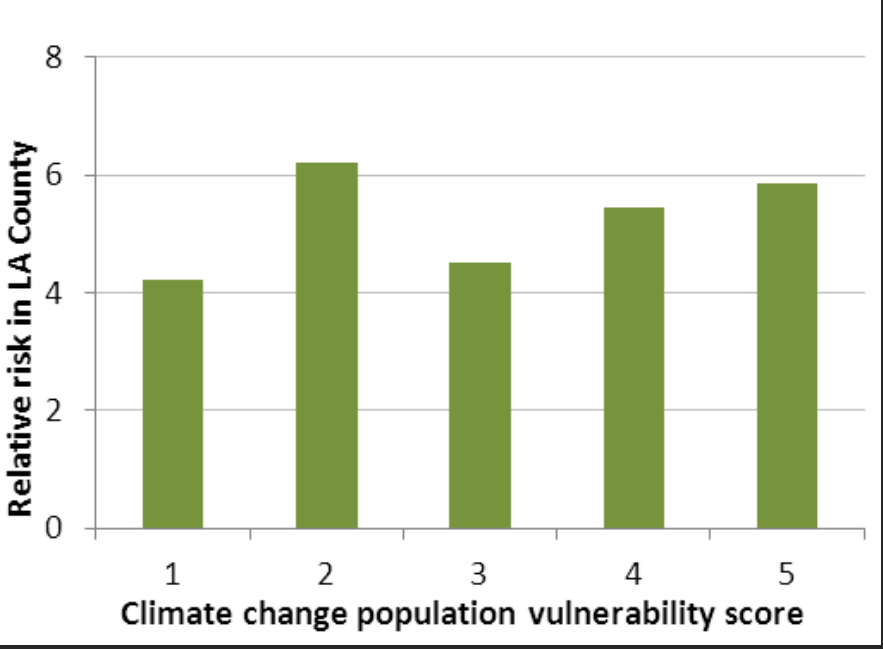
Fresno County



Fresno County: Relative risk of Emergency Visits for heat illness by vulnerability score



Los Angeles County: Relative risk of Emergency Visits for heat illness by vulnerability score



Conclusions

- Screening tool is able to identify local communities at high risk for climate change impacts
- Climate change risks are not distributed equally across racial/ethnic groups
- Climate change poses additional risks to areas already affected by cumulative hazards
- Tool could be improved by incorporating data on future risks, not just current risks

Acknowledgements

Justin Scoggins, Lauren Joe, Jonah Lipsitt,
Matthew Heberger, Alberto Ortega, Colleen Reid,
Glen Sharp, Douglas Morales, Jerome Blake,
Lindsay Monge, and Javier Minjares.