

CAL FIRE Resource Management Grant Programs Overview

Climate Action Team Public Health Working Group

October 17, 2017

John Melvin, Staff Chief – Resource Protection and Improvement



About me.

- B.S. in Forestry, Humboldt State University.
- ISA Certified Arborist (WE-5889A)
- CA Urban Forests Council Cert. Urban Forester #101
- Registered Professional Forester #2817
- Fire Training
- Medical and Hazmat First Responder Training
- Work experience in forestry, urban forestry, arboriculture, wildland fire, medical first response, and GIS.
- I oversee the Urban and Community Forestry, Forest Pest Management, Vegetation Management and Prescribed Fire Programs.

CAL FIRE's California Climate Investments Grant Programs

- Landscape Scale Forest Health Grant Program
- Forest Legacy Program (FLP)
- Urban and Community Forestry Grants
 - *Urban Forest Expansion and Improvement*
 - *Urban Forest Management Activities*
 - *Urban Wood and Biomass Utilization*



California Climate Investments CAL FIRE Landscape Scale Forest Health Grants

- A landscape scale approach to:
 - Improve forest health while sustaining forest benefits
 - Increase carbon storage in forests
 - **Protect water quality and water supplies**
 - Create forests more resilient to disturbance (fire, drought, pests and disease, etc.) in light of climate change.
 - **Reduce emissions resulting from wildfires**

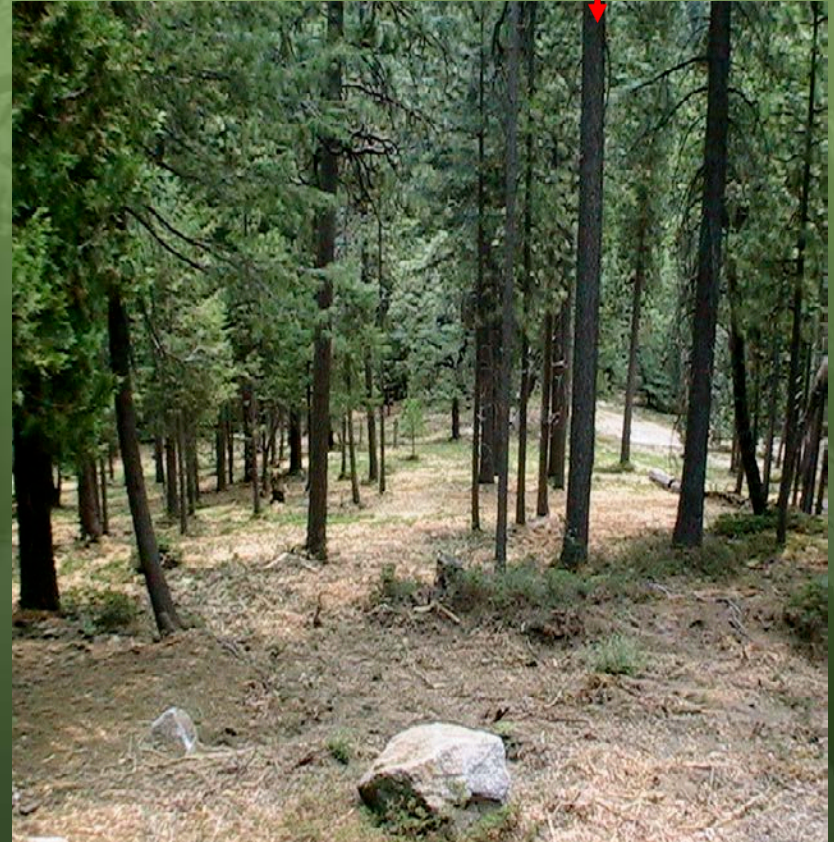
Landscape Scale Forest Health Program Focus

- Projects across large landscapes
 - watersheds, firesheds, or larger areas
- Cooperative ventures between multiple ownerships (federal, state, local, non-industrial private)
- Multiple practices implemented with each project
 - ex.: Thinning, harvesting, reforestation, prescribed burning, fuel reduction, seed bank or nursery operation, conservation easements, and biomass utilization
- Conducted in priority areas as identified by CAL FIRE
 - sustainable working forests, high fire threat to ecosystem health and community safety, and areas under threat by pests, drought, etc.

BEFORE



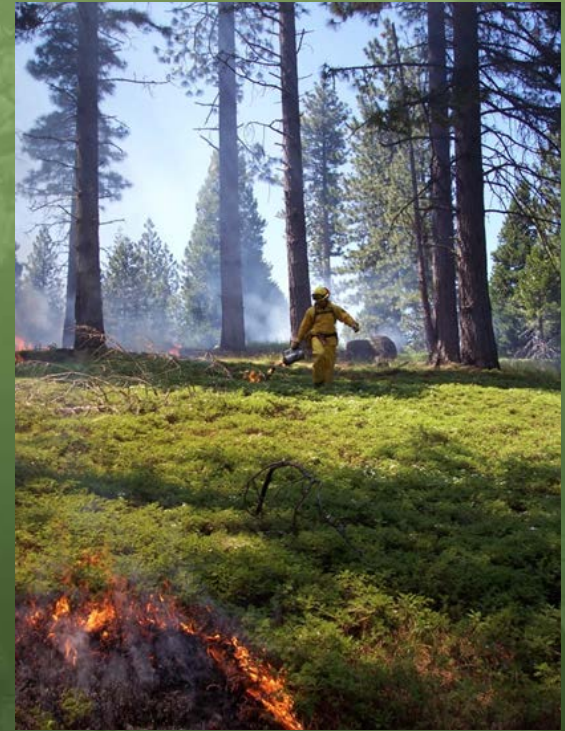
AFTER



Musick Creek Fuel Treatment Project
(Shaver Lake)

(Fresno County near
Before and After Photos)

Prescribed Fire



Reforestation



California Climate Investments CAL FIRE Urban & Community Forestry Program

- Technical assistance and advice
- Public and professional education
- Public events
- Local and regional advocacy
- Networking and partnerships
- Technology transfer
- Grants
- Conduit to national programs



Program Highlights

- Staff of 9, six field specialists, one environmental scientist (education and outreach specialist), one program manager, one analyst
- Websites = www.ufe.org and www.fire.ca.gov
 - SelectTree/CA Big Trees Register/Urbanwood/ForestTree
- CA ReLeaf Network = 100+ Community Groups
- CA Urban Forests Council and Regional councils
- Grant Programs (GGRF 14/15, \$17.8 million, \$15.8 million - grants)
 - a. Urban Forest Expansion and Improvement
 - b. Management Activities
 - c. Urban Wood and Biomass Utilization
- Tree City USA awards – 148 cities, 12 Tree Line Utilities, 10 Tree Campus
- Applied Research & Demonstration

Urban Forest Benefits

- GHG storage and avoided emissions
- Energy Conservation
- Air Quality
- Conserving Runoff
- Water quality improvement
- Economic (property value +)
- Public Health
- Jobs
- Much more.....



It's really about all the benefits gained from implementing a systematic approach of using vegetation to solve problems in our urban areas.

Types of Urban Forestry Grant Projects

- Urban Forest Expansion and Improvement

- Urban tree planting projects and associated costs
- Purchase and improve unused neighborhood parcels
- Similar to Green Innovations otherwise

- Urban Forest Management Activities

- Urban forest management plans
- Tree or urban forest related policies and ordinances
- Urban tree inventories
- Urban forest mapping and analysis
- Note: must also have an “early action” tree planting component*

- Urban Wood and Biomass Utilization

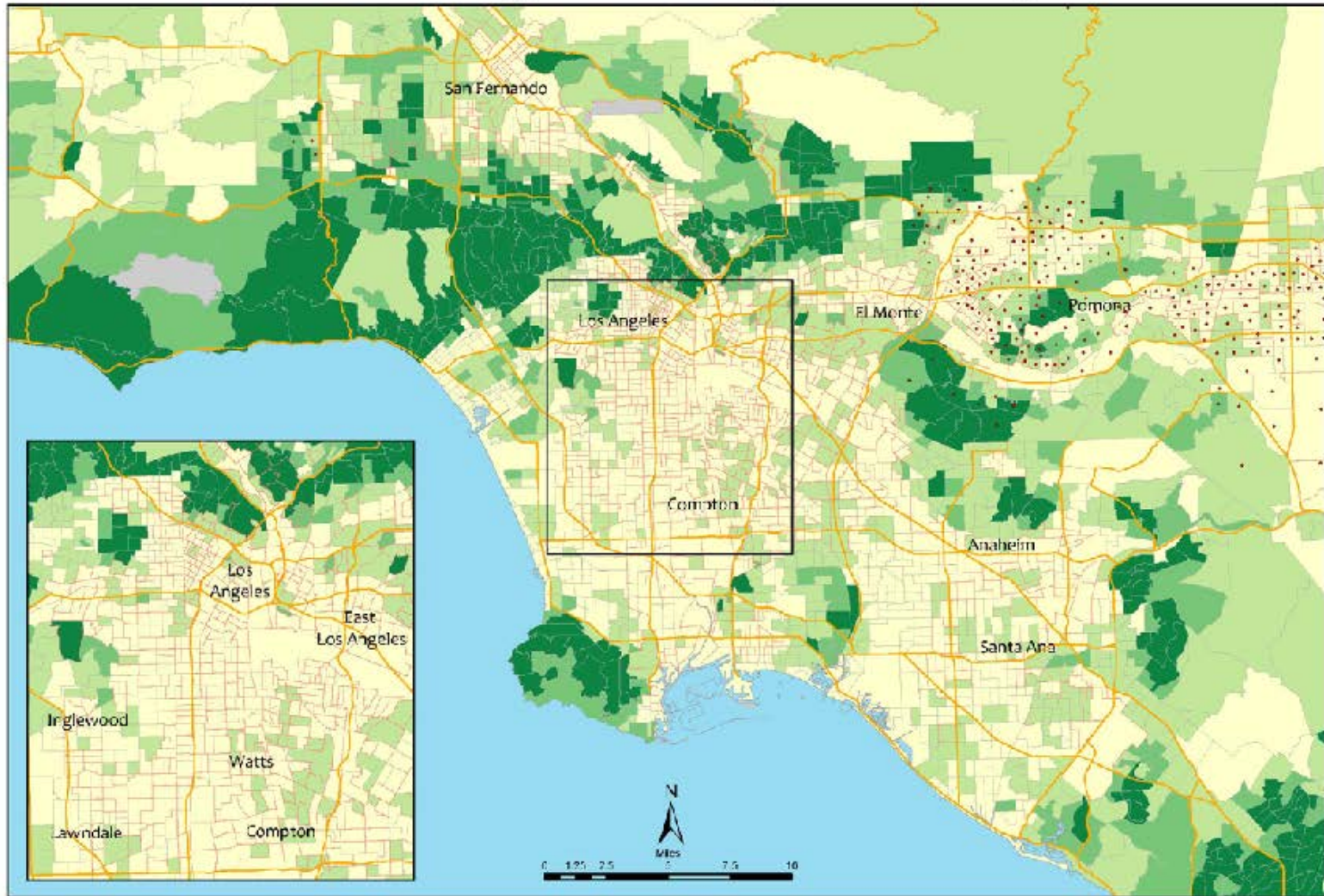
- Development and implementation of an Urban Wood or Urban Biomass Utilization project or program. Better utilizing this resource will lead to improved management of urban vegetation. The focus of this program is to utilize the tree for its highest and best use(s) that leads to reductions in GHG emissions.



25 10:52 AM



LA Urban Area Tree Canopy and Disadvantaged Communities by Census Tract



Data Sources: Disadvantaged Community data derived from CalEnviroScreen v 2.0; Tree Canopy Cover derived from EarthDefine, 2012; Days over 90 data derived from PRISM 2001 - 13 average.

Thank You!

John Melvin, Staff Chief

CA Dept. of Forestry & Fire Protection (**CAL FIRE**)

P.O. Box 944246 Sacramento, CA 94244-2460

(916) 653-9418

(916) 653-8957 fax

john.melvin@fire.ca.gov