



Firestorm 2007



San Diego County Fire Storm 2007



October 21 to November 9, 2007

Significant Damage

- Over 12 Fires burned during the Emergency
- Over 15 % of the County of San Diego - 400,000 Acres



Fire Overview

Fire Name	Date Started	Location	Acres	Homes Destroyed	Other Structures Destroyed	Injuries	Deaths
Harris	10/21/2007	South East County	85,000	111	88	37	6
Witch Creek	10/21/2007	North East County and City of San Diego	197,990	911	205	28	2
Rice Canyon	10/22/2007	Fallbrook	9,000	206	42	3	0
Poomacha	10/23/2007	North East County Merged with Witch on 10/26/2007	42,000	78	19	18	0
Horno	10/23/2007	Camp Pendleton	21,084	0	0	1	0
TOTAL			355,074	1,306	354	87	8

•Source: WebEOC, PreHospital MICN data, Medical Examiner Data

Largest Evacuation in California History

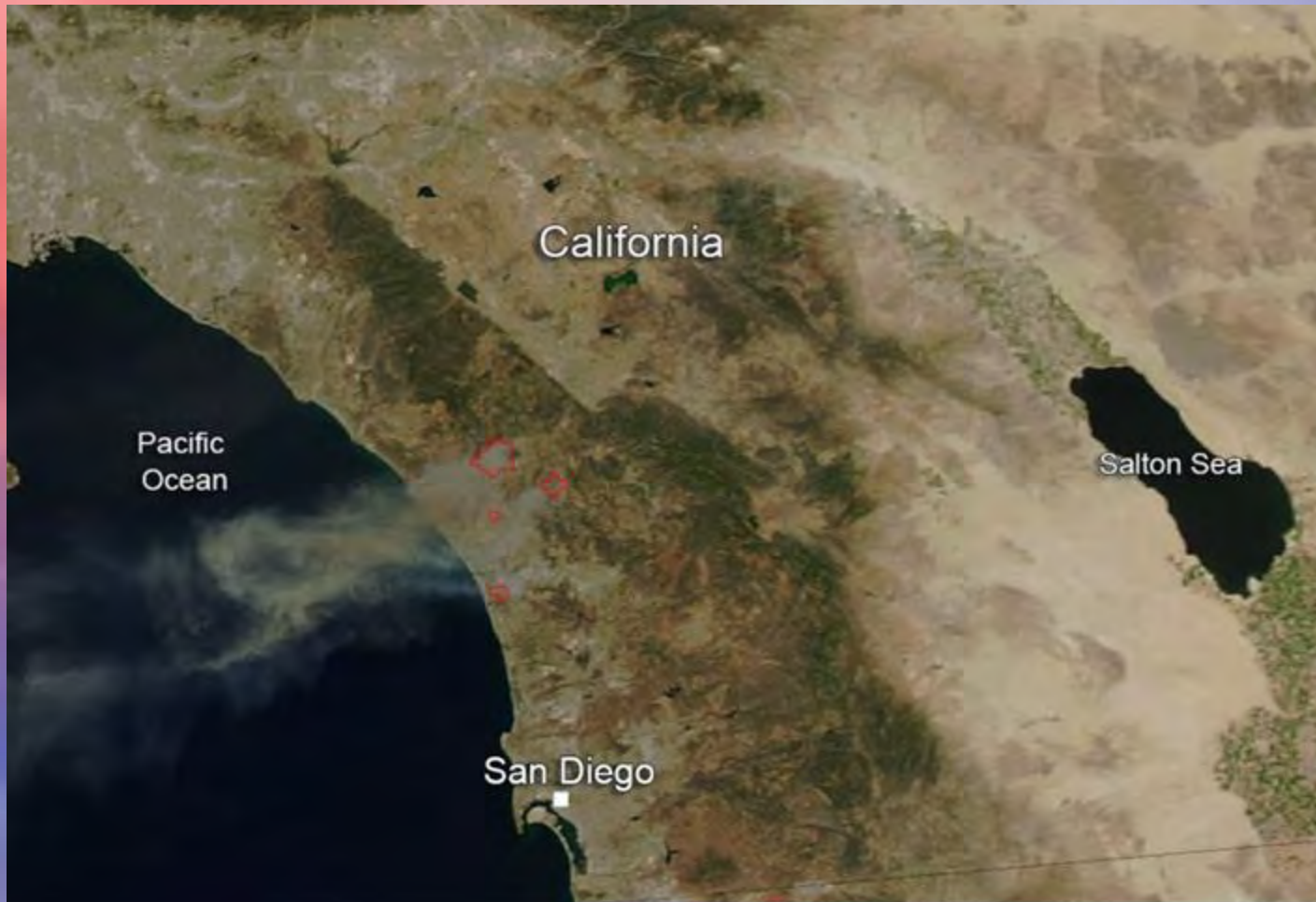


- Approximately 515, 000 people evacuated
- Over 2,200 medical patients evacuated

Oct/Nov 2007: San Diego Wildfires



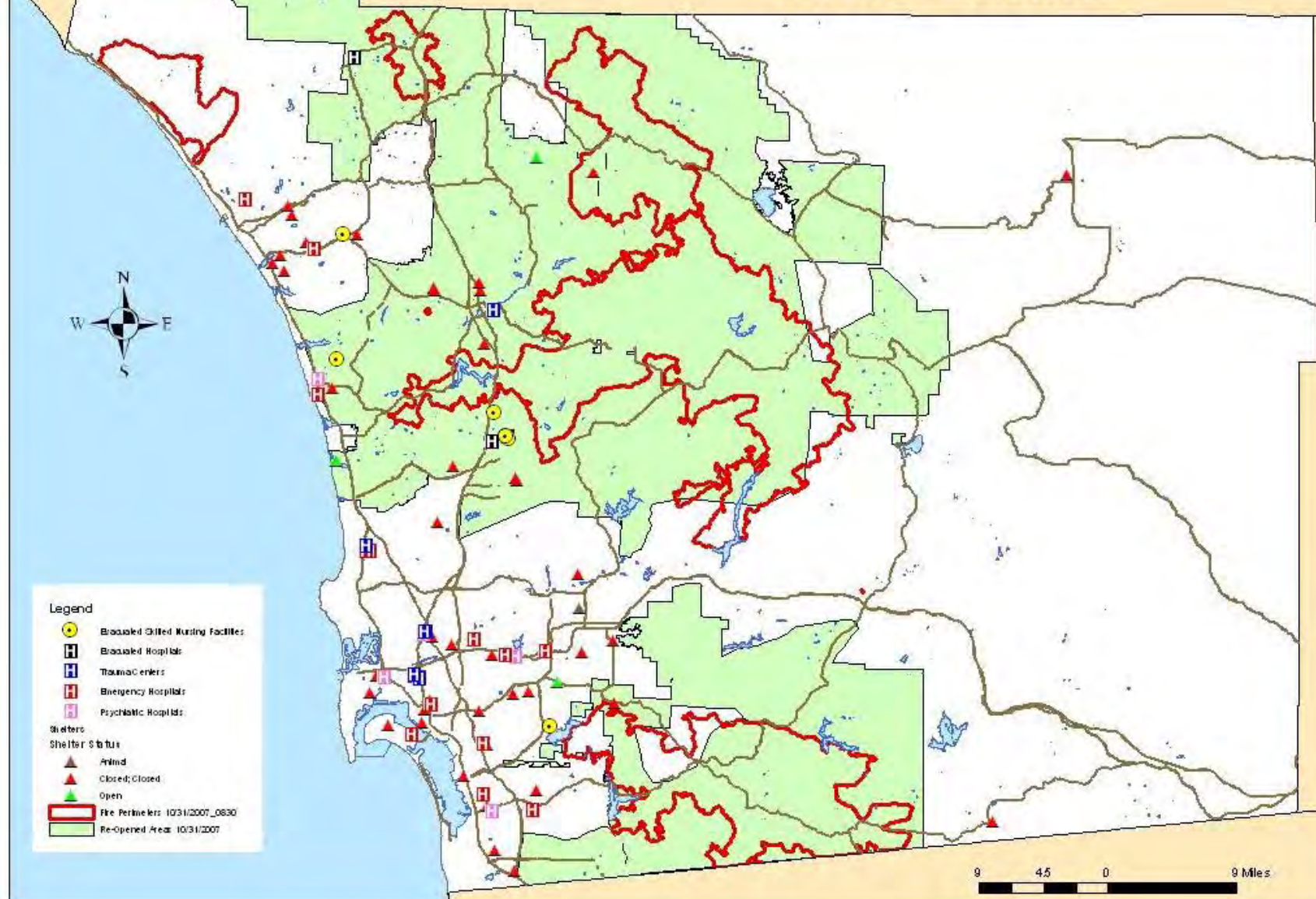
May 2014: San Diego Wildfires



Source: <http://www.nasa.gov/content/goddard/fires-in-san-diego-county-blazing/>

This natural-color satellite image was collected by the Moderate Resolution Imaging Spectroradiometer (MODIS) aboard the Aqua satellite on May 14,

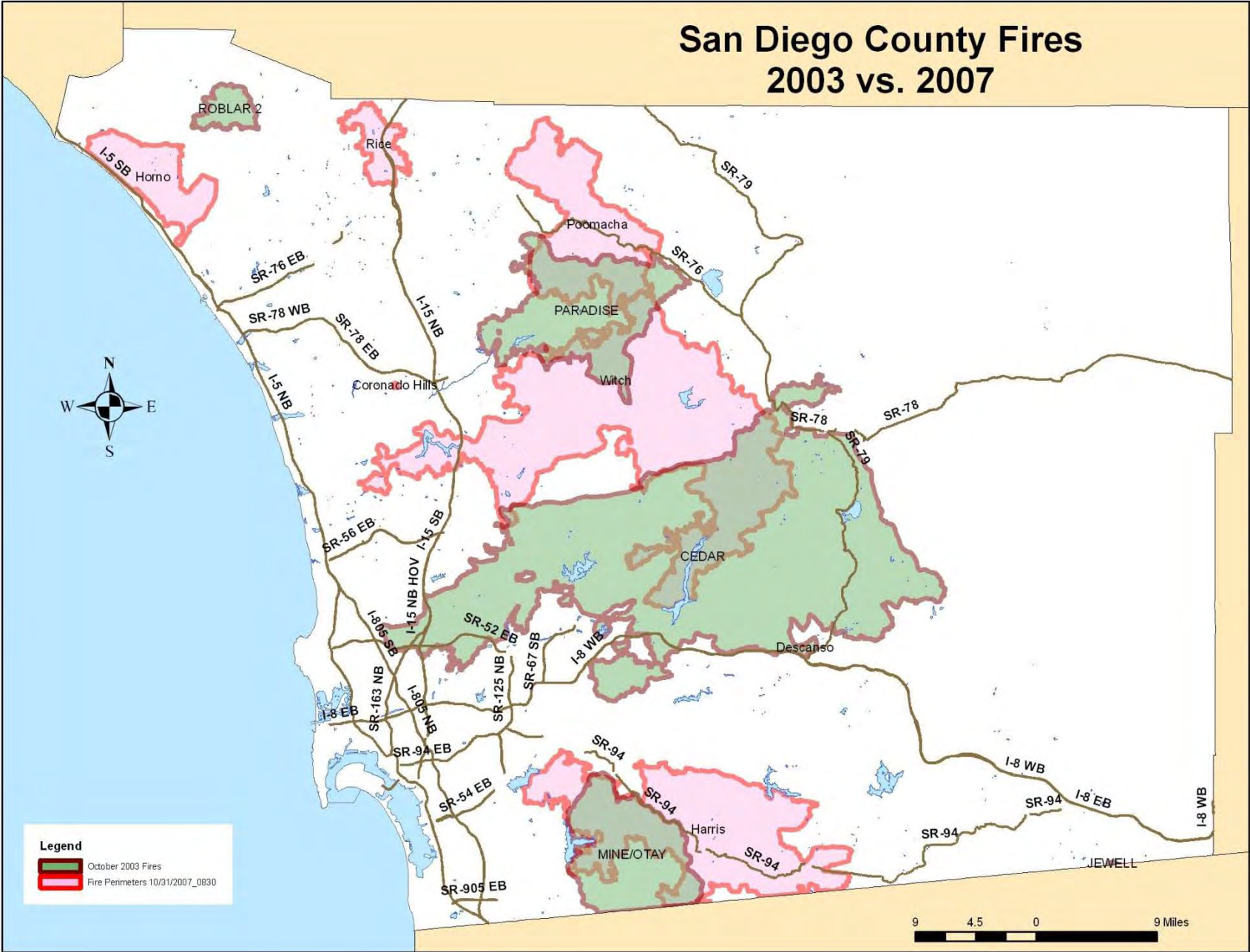
San Diego County Fires 10/21/07 - 10/30/07



- Legend**
- Graduated Shifed Nursing Facilities
 - H Graduated Hospitals
 - H Trauma Centers
 - H Emergency Hospitals
 - H Psychiatric Hospitals
- Shelters**
- Shelter Status**
- ▲ Aired
 - ▲ Closed/Closed
 - ▲ Open
- Fire Perimeters: 10/31/2007_0830
Re-Opened Area: 10/31/2007

9 4.5 0 9 Miles

San Diego County Fires 2003 vs. 2007



EOC Activation: Annex D

- Multiple burn patients were identified from the Harris Fire
- San Diego County EMS activated Annex D to enable the system to absorb more burn patients. The EMS DOC and HHSA DOC were also activated.
- This also allowed for emergency response providers to modify their response to more effectively deal with the larger Firestorm

Response to Firestorm 2007

- Operational Area Emergency Operation Center (EOC) activated Sunday, October 21 at Level III to begin local response, coordinated requests for medical needs, PHN interaction with American Red Cross (ARC), donations, etc.
- EMS Departmental Operation Center EMS DOC (also know as the MOC) activated to coordinate medical response (MRC), evacuation of nursing home/SNFs, and coordinate medical needs.

Response to Firestorm 2007

- HHSA DOC activated – to ensure continuity of operations.
- Ongoing efforts at 4 Local Assistance Centers (LACs) – Recovery Phase.
- Imprints as of Nov 12, 2007:
 - 6496 food stamp applications
 - 2718 mental health requests
 - 2357 public health contacts (e.g., flu shot, first aid)
 - 210 Aging Independence Services requests
- About 1494 HHSA staff on site to assist with efforts.



Declaration of Emergency

- **October 21** - Governor declared a state of emergency
- **October 22** - The Director of the Office of Emergency Services proclaimed a “local disaster”/ratified at the next BOS meeting, Oct 24th
- **October 23** – Presidential declaration of emergency
- **October 24** – President issued a major disaster declaration

Mass Care & Shelter



Max of
52
Shelters

Medical Reserve Corp

- 876 members currently
- 260 members replied with their availability
- 66 members deployed :
 - 48 Nurses
 - 15 Physicians
 - 1 Nurse Practitioner
 - 1 Physician Assistant
 - 1 Respiratory Therapist

Pharmaceutical Operations

- Firestorm 2007 needs:
 - Shelter medications
 - Skilled Nursing Facility Medications
 - Increase use of respiratory medications
- The Pharmacy Emergency Response Team was mobilized
- Varied methods were used to obtain these medications:
 - Hospital Systems provided resources
 - Local, State, and Federal Caches we made available with response teams
 - Local Pharmacies

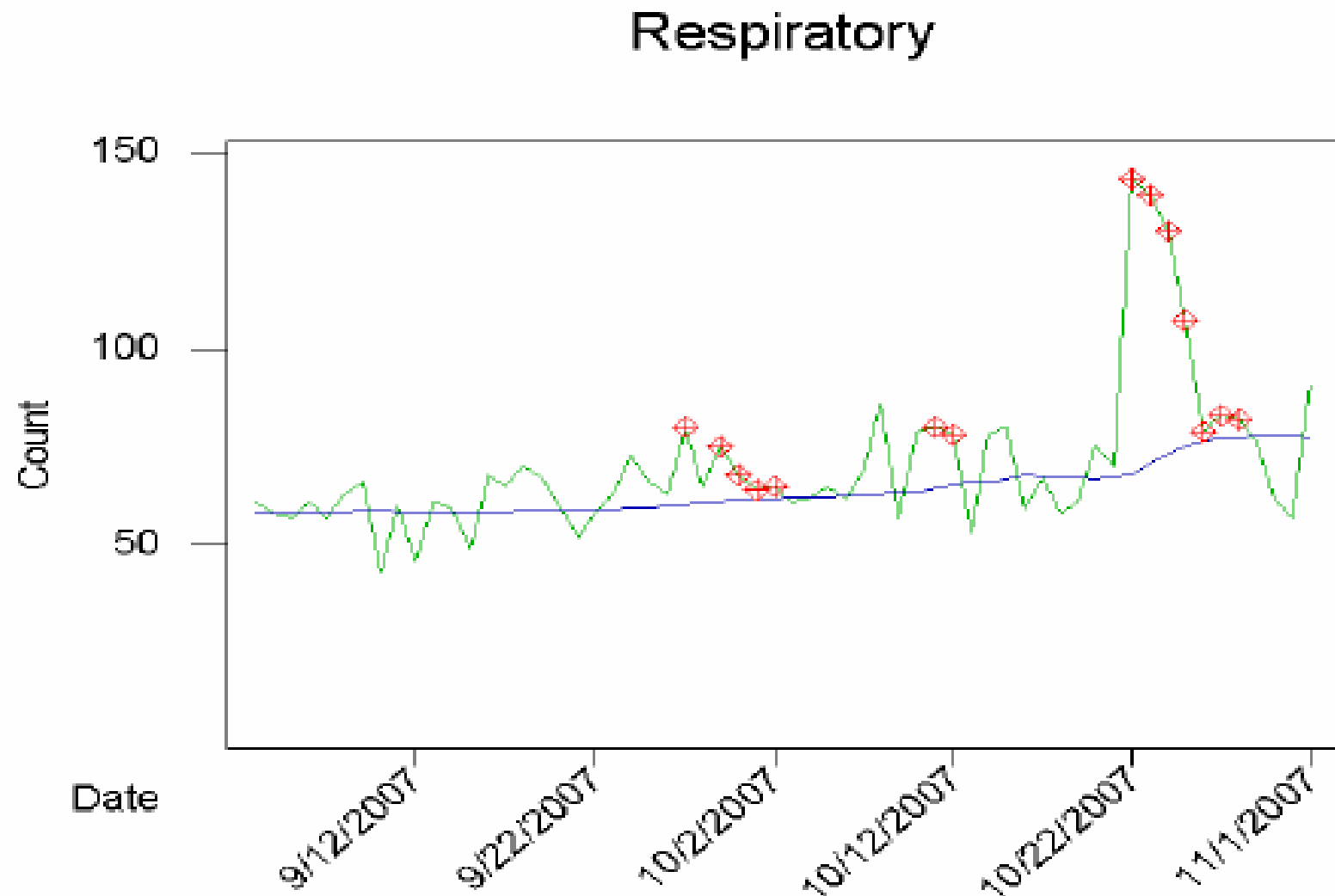
Infection Control Needs

- Shelter Assessment – Daily
- Epidemiology Surveillance Continued
- Contact maintained with Medical Teams at Shelters
- Public Health Nurses served as resources for shelters

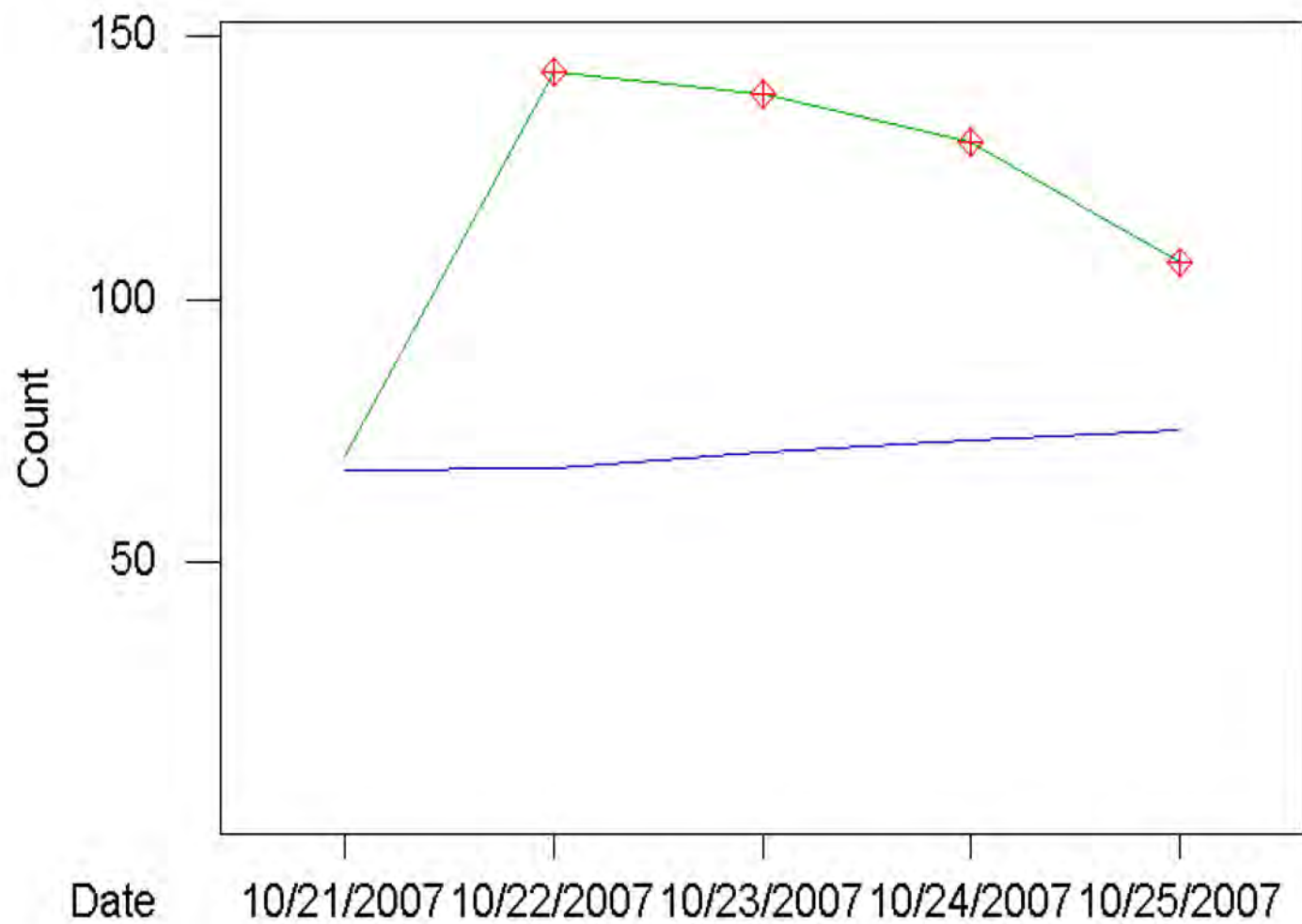
Air Quality Index

Air Quality Index (AQI) Values	Levels of Health Concern	Colors
<i>When the AQI is in this range:</i>	<i>...air quality conditions are:</i>	<i>...as symbolized by this color:</i>
0 to 50	Good	Green
51 to 100	Moderate	Yellow
101 to 150	Unhealthy for Sensitive Groups	Orange
151 to 200	Unhealthy	Red
201 to 300	Very Unhealthy	Purple
301 to 500	Hazardous	Maroon

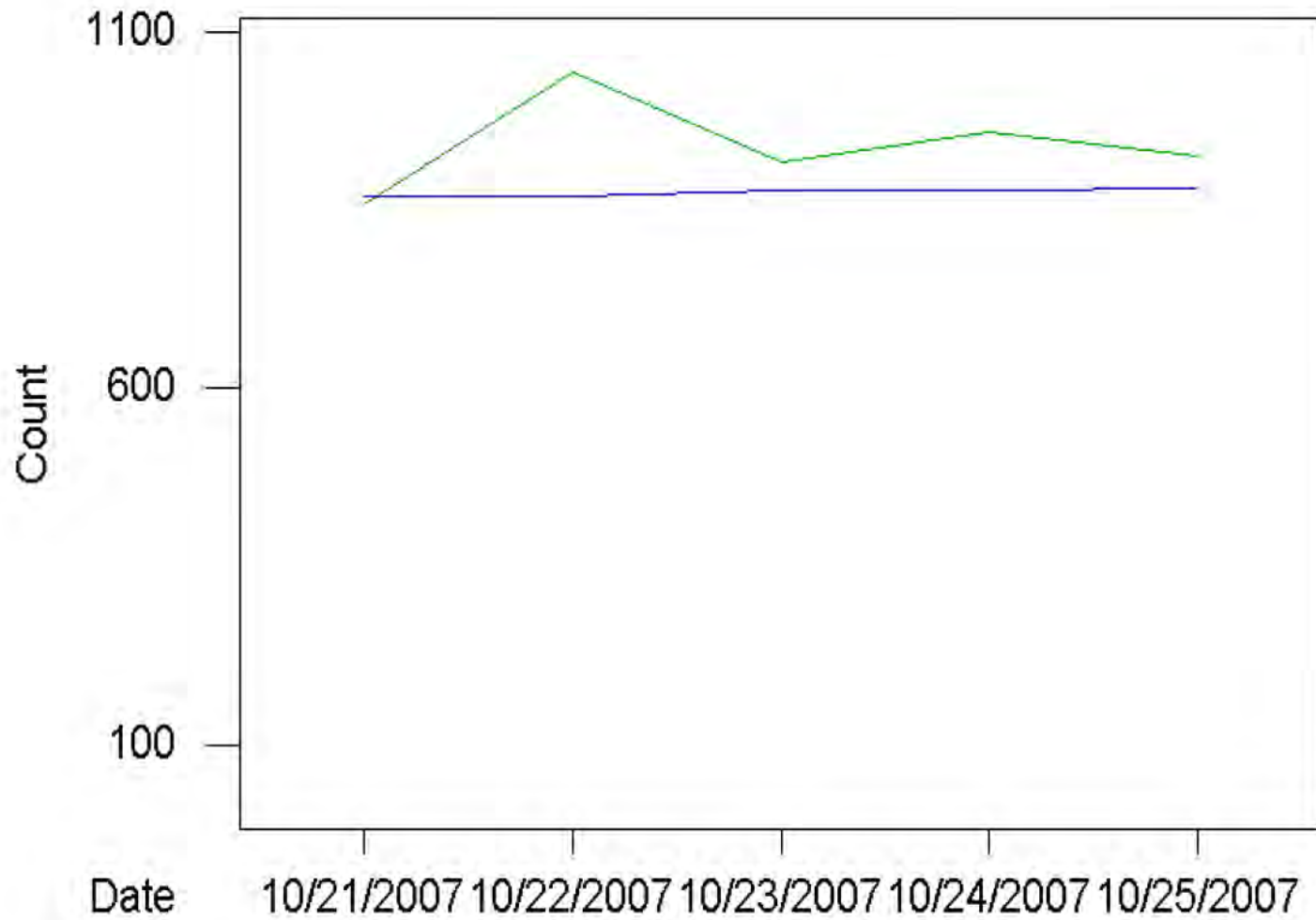
Surveillance of Respiratory Visits



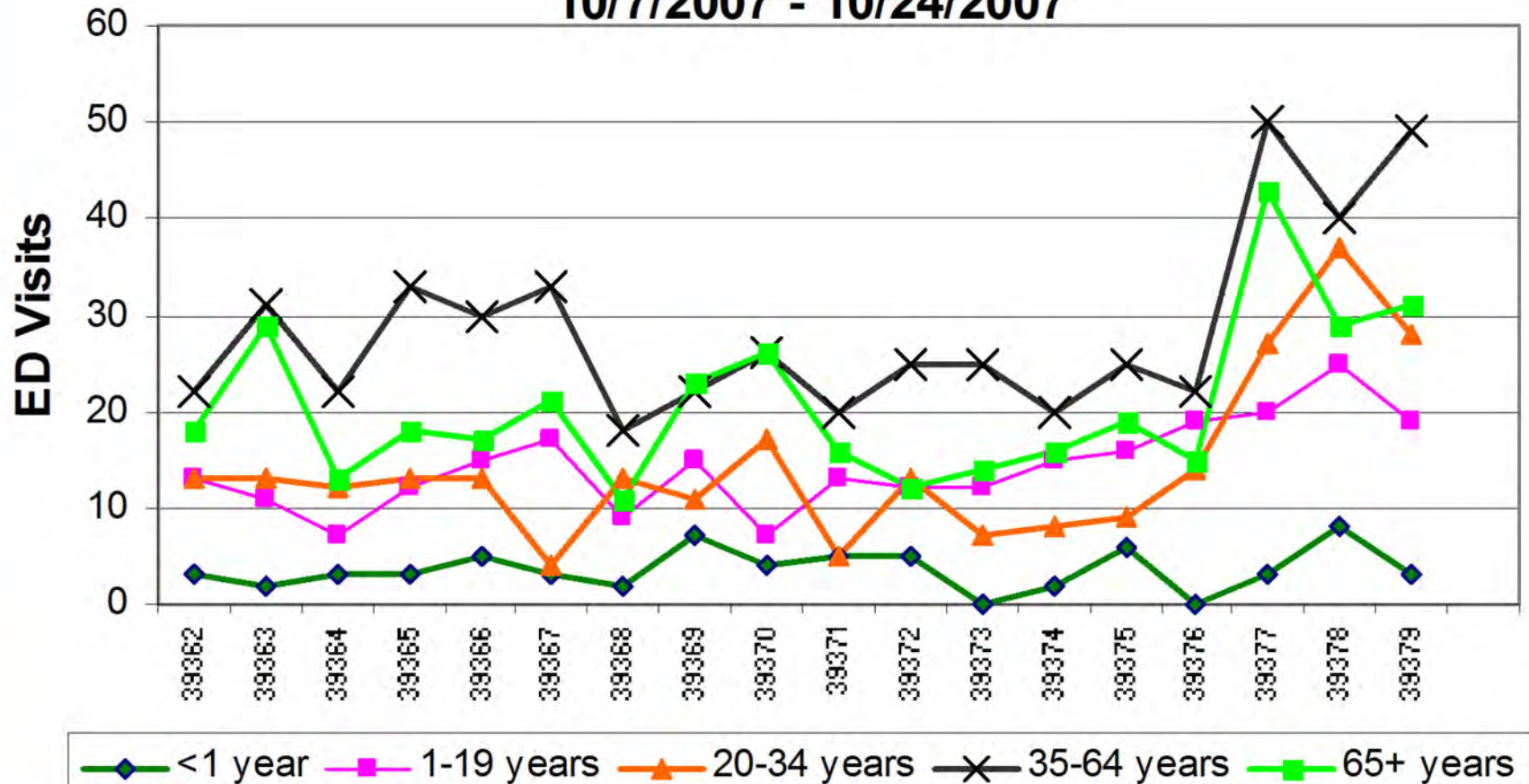
Respiratory



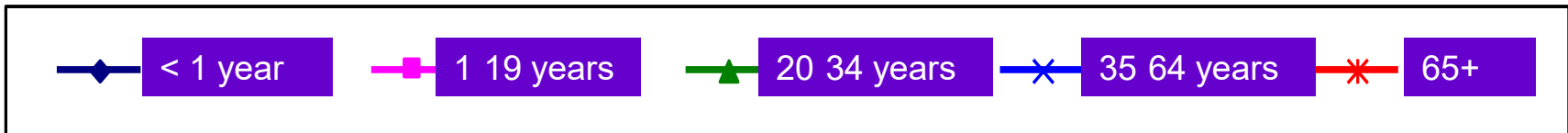
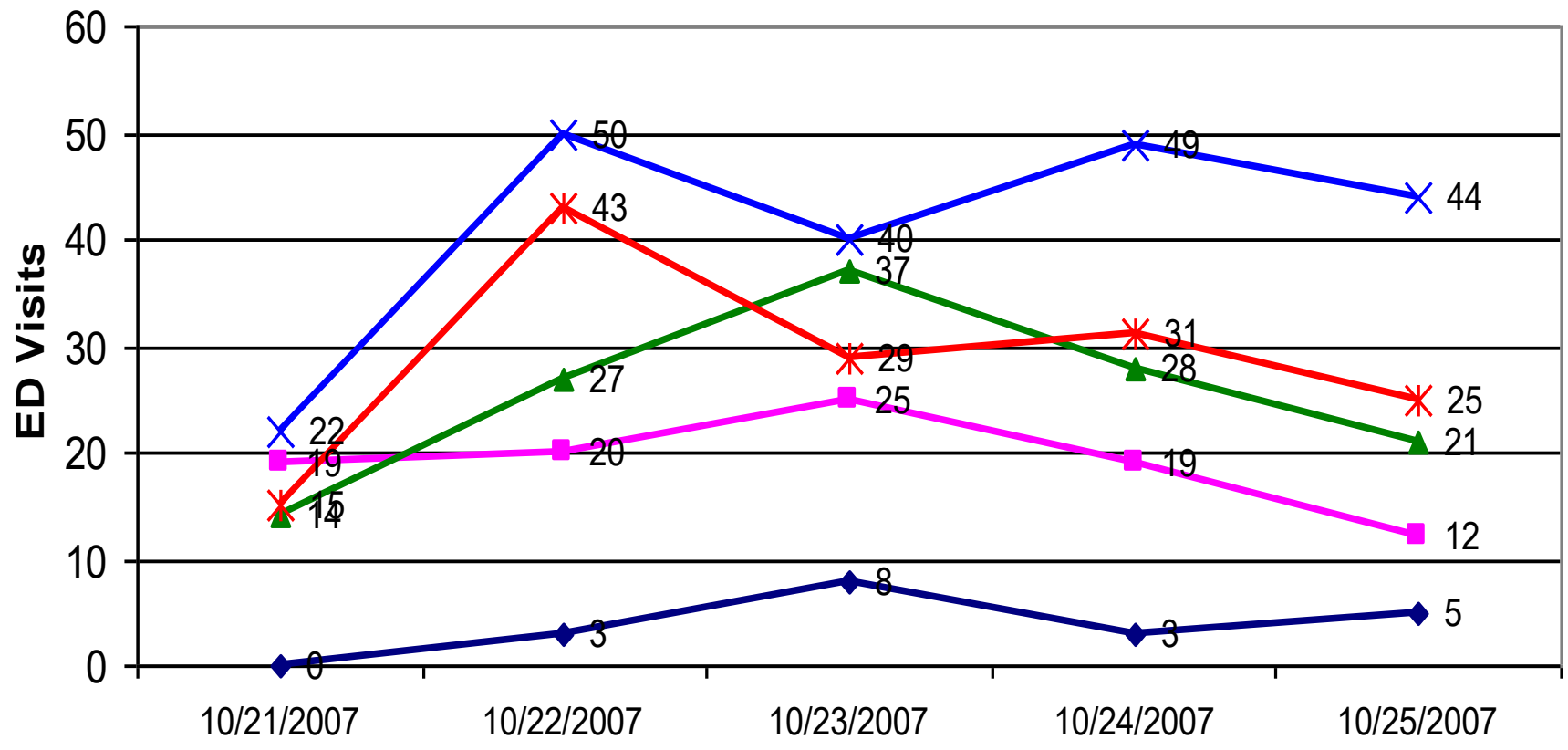
Total Emergency Department Visits



Emergency Department Visits for Respiratory Symptoms by Age, 10/7/2007 - 10/24/2007

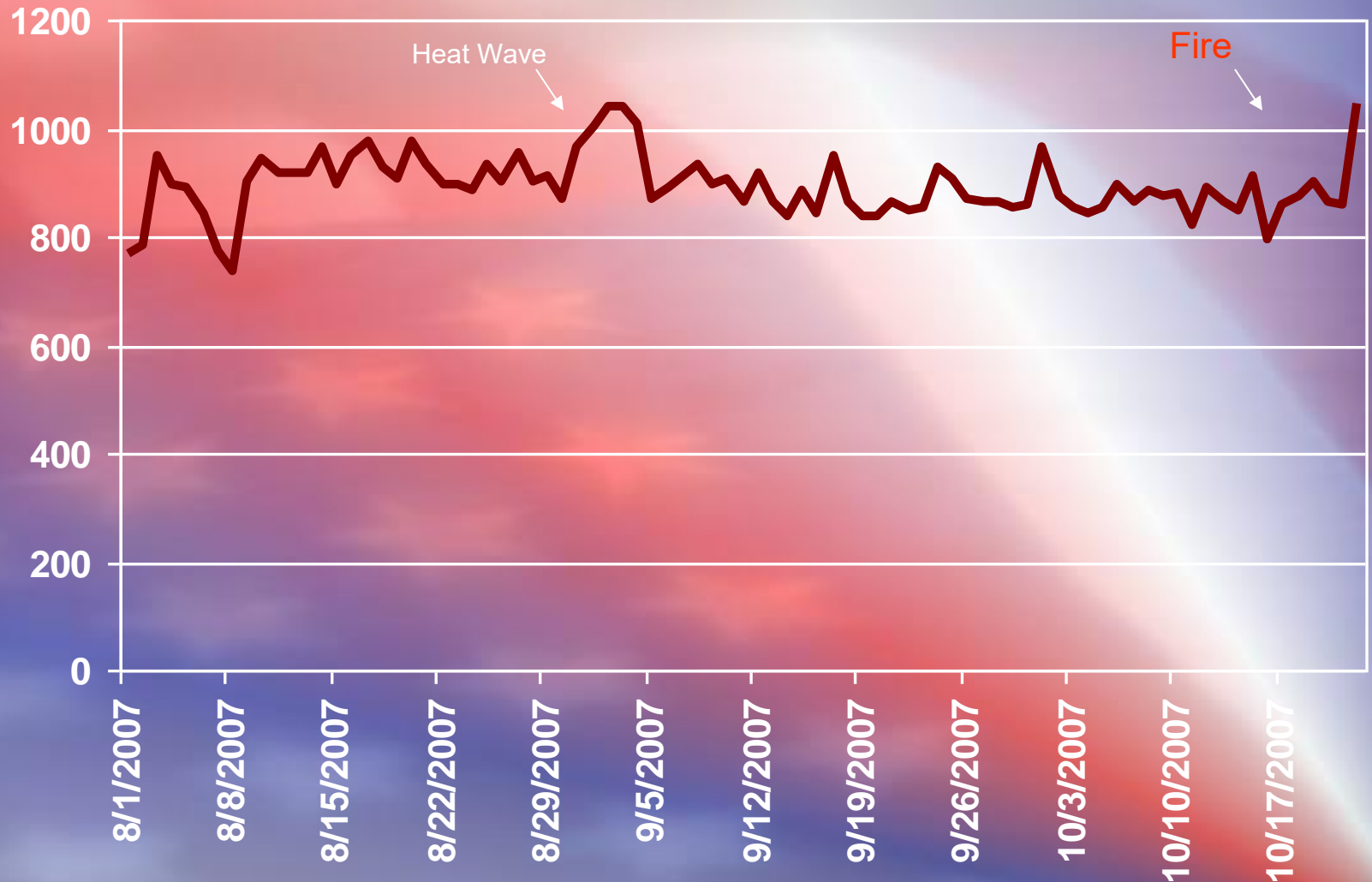


Emergency Department Visits for Respiratory Symptoms by Age, 10/21/2007 - 10/25/2007



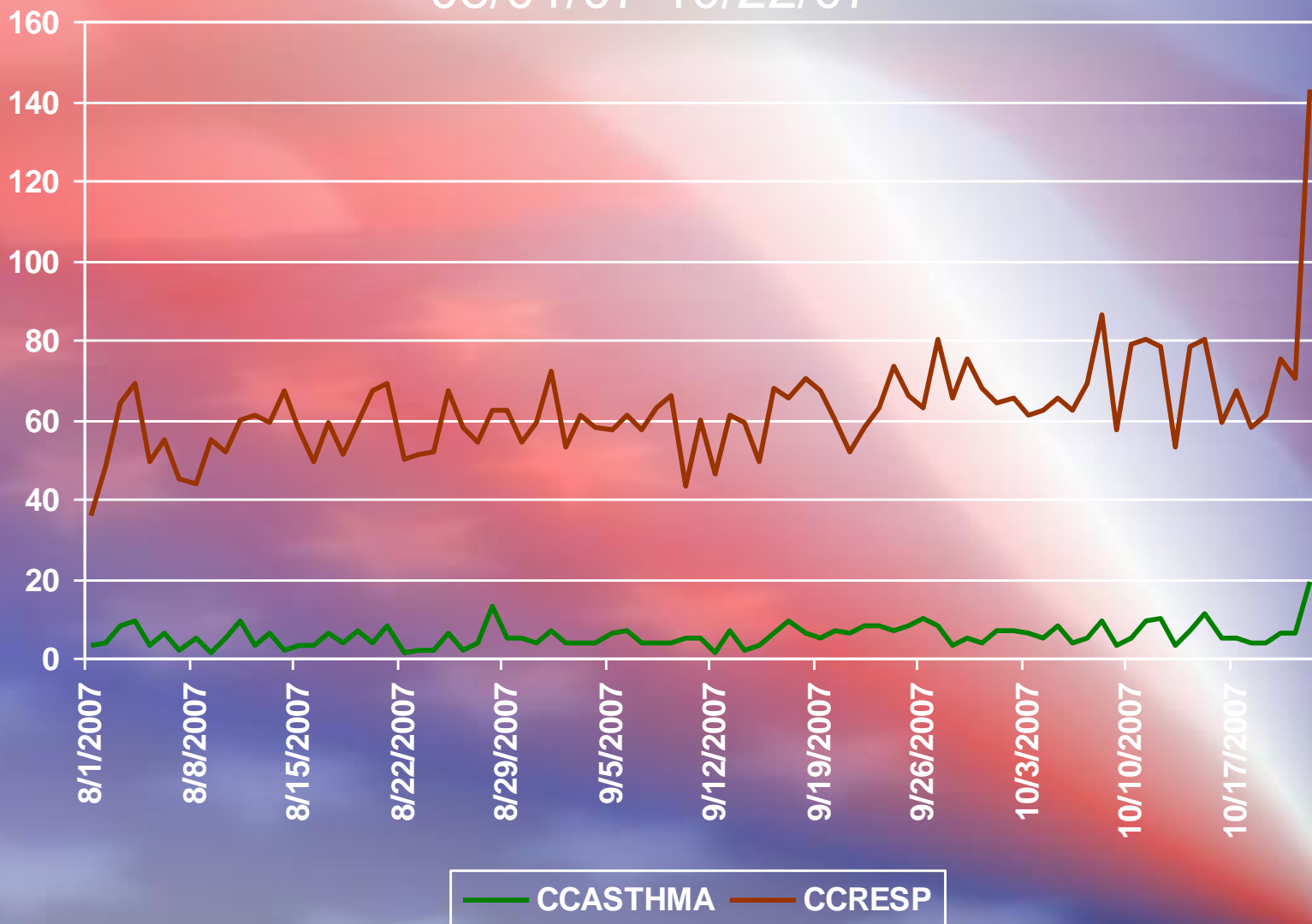
Total Encounters at Participating Emergency Departments*

08/01/07-10/22/07



Respiratory Related Encounters at Participating Emergency Departments*

08/01/07-10/22/07



Conclusions



- Sustained operations during disaster require community and employee support

Questions?

