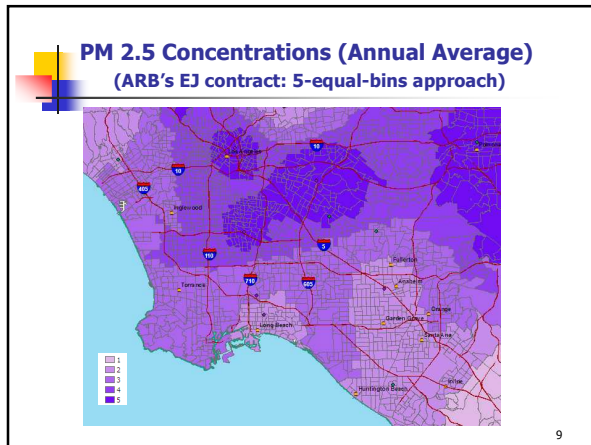


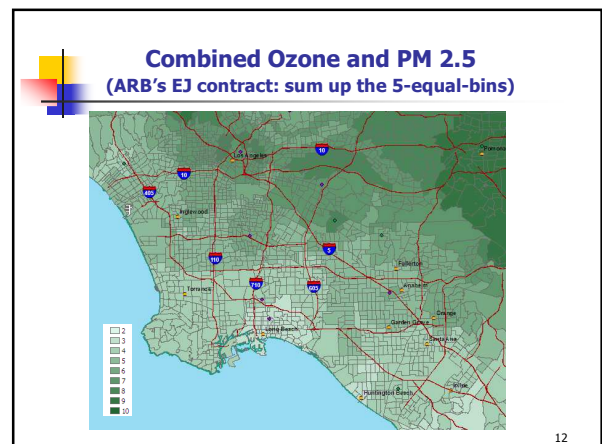
- ### PM 2.5 Concentrations
- ◆ Average of 3 years
  - ◆ Interpolated from monitors to census tracts
  - ◆ Measured air concentrations of fine PM
- 8

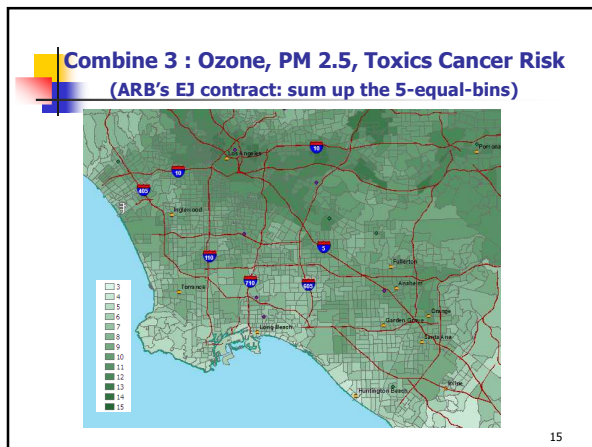
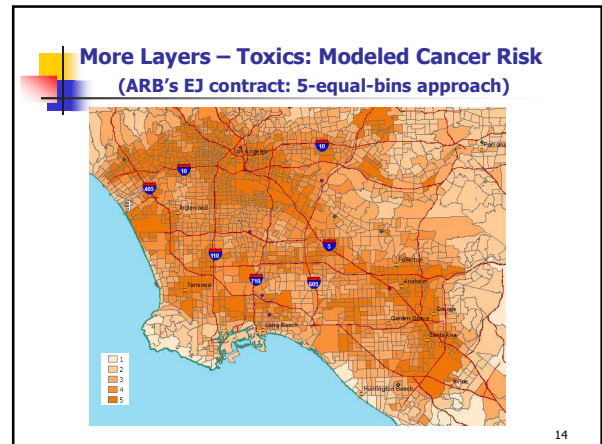


- ### Considerations for Breakpoints
- ◆ ARB's EJ research contract uses 5 equal bins
    - Ranking of values, 1 to 5 (quintile approach)
  - ◆ Health considerations for breakpoints
    - Threshold effects observed in literature
- 10

### Combining Layers on Maps

11





- Considerations for Combining Layers**
- ◆ ARB's EJ research contract sums the 1-5 bins across all layers
  - ◆ Health considerations for combining layers
    - Relative weighting of layers, health impacts
    - Differing health endpoints, target organs
    - Sensitive age groups
- 17

**Other Considerations**

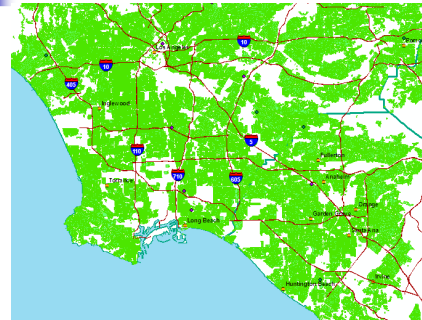
18

## Land Use Layers

- ◆ Data quality varies by region
- ◆ **Residential zoning and/or population density**
- ◆ **Sensitive land uses**  
(e.g., schools, hospitals, child care...)
- ◆ **Proximity to hazardous land uses**  
(e.g., ports, railyards, major facilities)

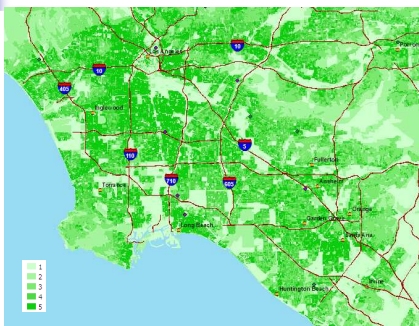
19

## Residential Land Use Zones (ARB's EJ contract: Residential zoning only)



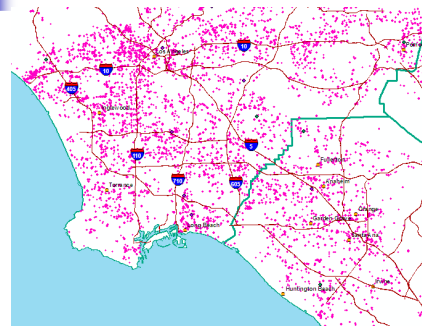
20

## Population Density (Census Data – shown in 5-equal-bins)



21

## Sensitive Land Uses (Schools, Hospitals...) (ARB's EJ contract: Count hazards near sensitive people)



22

## Considerations for Residential Population

- ◆ **Residential land zoning - used in EJ contract**  
- Some population is not addressed
- ◆ **Population density**
- ◆ **Other options?**

23

## Seeking Work Group Input

- ◆ **Appropriate indicator layers & breakpoints**
- ◆ **Combining layers**
- ◆ **Relative weighting**
- ◆ **Residential population density/land use options**
- ◆ **Hazard proximity methods for sensitive populations**
- ◆ **Other**

24

