



# AB 617 2020 Community Recommendations

NOVEMBER 6, 2020

# Zoom Housekeeping

<https://ww2.arb.ca.gov/2020RecsWebinar>

## AB 617 2020 Community Recommendations

NOVEMBER 6, 2020



## Listening to Language Interpretation

1. In your meeting/webinar controls, click **Interpretation**. It can be located at the bottom of the screen.
2. Click the language that you would like to hear. For this meeting, you will have English and Spanish as your options.
3. To only hear the interpreted language, click **Mute Original Audio**.

If you have questions during the meeting, please use the chat feature and type in your question. CARB staff will translate the question for the presenters to respond. If you are not able to use the chat box, let the interpreter know of your question by raising your hand and CARB staff will interpret and type it into the chat box for you.



3

## Before We Get Started...

- Please **mute yourself** and make sure your name is showing as your screen name
- To **rename**, click on the top right side of your picture/video.
- Use this naming convention, **First Last – Affiliation (e.g. Jane Doe - CARB)**
  - **C** - Community Organization / Agency / Air District / etc...
  - **P** – for General Public
  - **I** - Interpreter
- **Need help?** Use the Chat function to request assistance



4

# Zoom Orientation

## Mute/Unmute

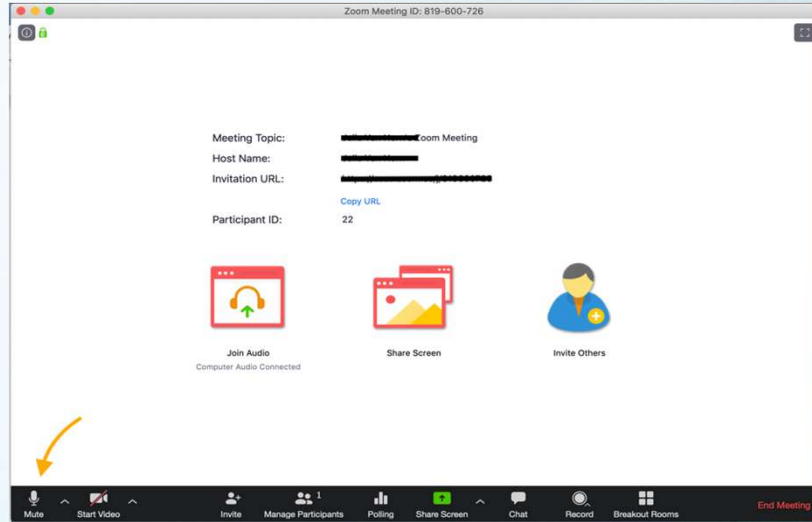
Please remain on mute unless your name has come up in the speaking queue

- Zoom:

**Mute/Unmute** button at bottom left

- On phone:

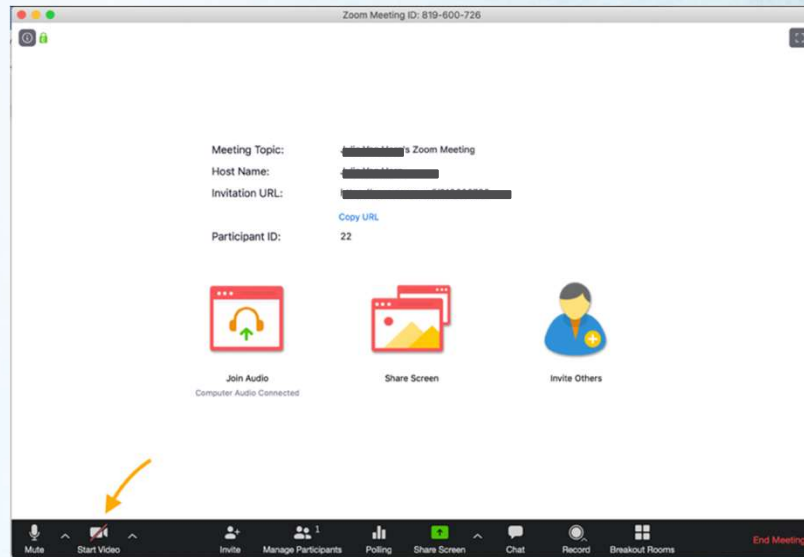
Dial \*6 to mute/unmute



5

## Video

Click the camera icon at the bottom left of your screen to toggle your video on and off.

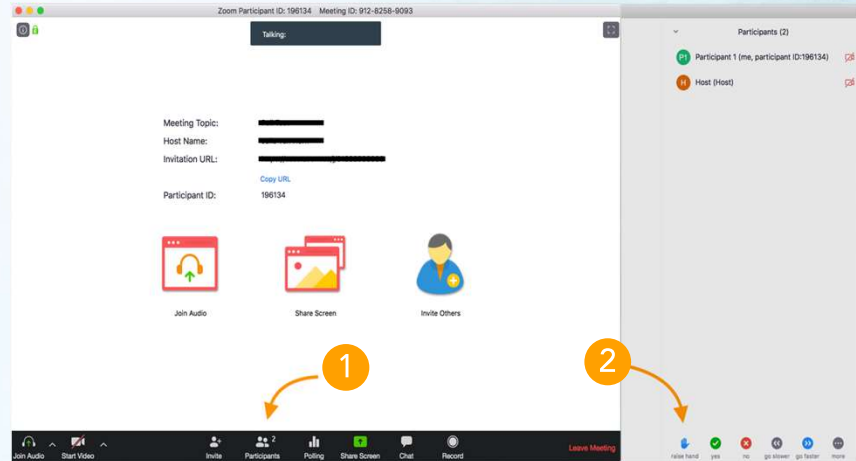


6

## Raise Hand

To be added to the speaking queue, please use **Raise Hand**

Click **Participants**, then **Raise Hand**. We'll also ask those on the phone.



## Language

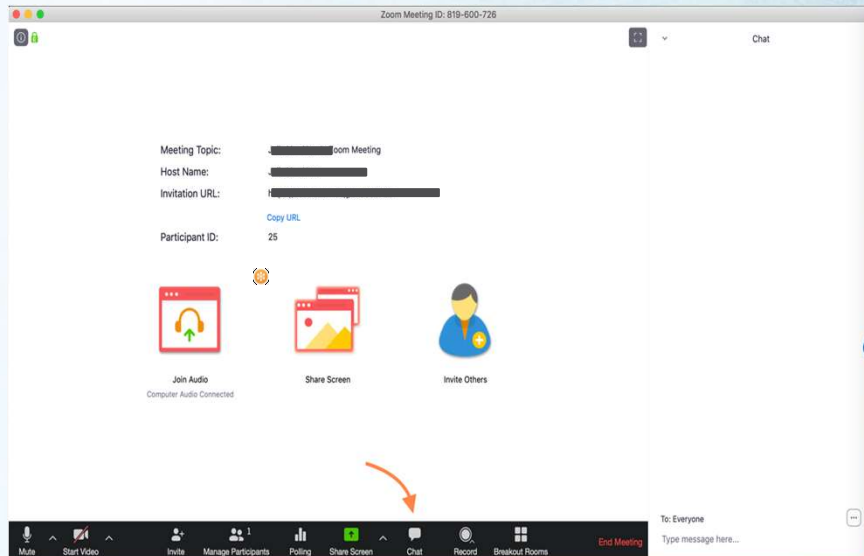
Everyone please click on the **globe** at the bottom of your screen and choose your preferred language: **English** or **Spanish**.

Do not click **Mute Original Audio** unless you only want to hear the interpreter.



## Chat

Click on the **chat** icon near the center bottom of your screen. You can choose to chat to all attendees or 1-on-1 "private" chat. Private chats are archived.



9

10



## Recommendations Presentation

**13 Communities Selected Statewide**

Community Emissions Reduction Plan:

7 implementing (2018)  
4 developing (2019)

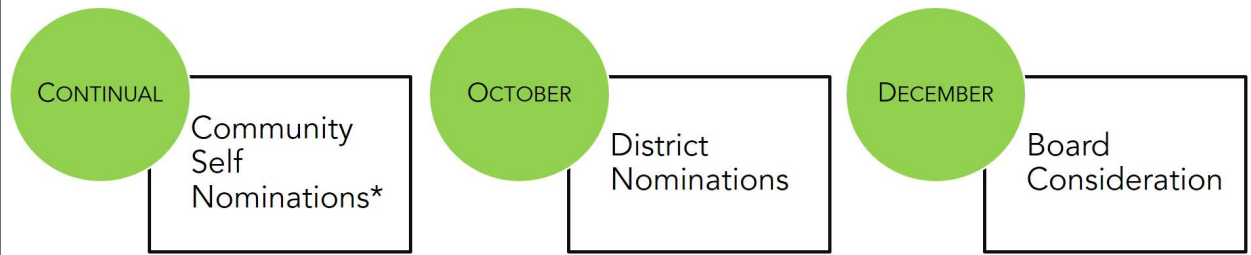
Air Monitoring:

2 monitoring (2018)



# Annual Community Consideration

Process: CARB Governing Board annually considers selection of communities for either community emissions reduction programs, community air monitoring plans, or both



\*Accepted continuously email: [communityair@arb.ca.gov](mailto:communityair@arb.ca.gov)



# Considerations for 2020 Recommendations

13

## 2018

- Factors considered
  - Exposure to air pollution
  - Sensitive populations
  - Other measures of vulnerability
- Regional diversity and sources

## 2019

- Prior year considerations
- 2018 Board direction to prioritize monitoring communities
- Consider resources available, and existing communities need

## 2020

- All prior years considerations
- Board direction (December 2019)
- Budget, anticipate a very limited number of communities



# Communities\* Strongly Supported

*\*Communities with strong support from air districts, and communities to be recommended for selection in upcoming years.*

*\*Additional communities may be added*

*Released in June 2020*

14

### Existing Monitoring Communities

Richmond - San Pablo (Bay Area)      South Sacramento - Florin (Sacramento)

### Continually Supported Communities

East Contra Costa County (Bay Area)      Norwood, Old North Sacramento, Del Paso Heights (Sacramento)

East Oakland (Bay Area)      International Border Community - Otay Mesa, San Ysidro (San Diego)

Eastern San Francisco (Bay Area)      Arvin, Lamont (San Joaquin)

San Jose (Bay Area)      La Viña (San Joaquin)

Tri-Valley (Bay Area)      Madera (San Joaquin)

Vallejo (Bay Area)      Maywood, Commerce (east), Vernon, Bell (South Coast)

Northern end of Imperial County (Imperial)      Pacoima, North Hollywood, Sun Valley, San Fernando (South Coast)

South Natomas (Sacramento)      South Los Angeles, South Central Los Angeles, Hyde Park (South Coast)

## 2020 Community Self-Nominations

- ▶ Since program inception, over a hundred and twenty communities nominated\*
- ▶ 32 self-nominations for the following communities:
  - Salton Sea communities- Northern end of Imperial County (Imperial)
  - Arvin, Lamont, La Viña, Lindsay (San Joaquin Valley)
  - South Los Angeles, Inglewood (South Coast)
- ▶ Air districts received a number of self-nominations considered in their submittal

\*List of community nominations can be found at:  
<https://ww2.arb.ca.gov/capp-selection>



## Air District Recommended Communities

- ▶ Richmond – San Pablo (Bay Area)
- ▶ Northern end of Imperial County (Imperial)
- ▶ North Sacramento\*; Oak Park/ Fruitridge\*; and Meadowview\* (Sacramento)
- ▶ International Border- San Ysidro, Otay Mesa (San Diego)
- ▶ Arvin, Lamont (San Joaquin Valley)
- ▶ La Viña (San Joaquin Valley)
- ▶ South Los Angeles (South Coast)

\* Air monitoring system only; all other recommendations are for both a community emissions reduction plan and air monitoring system





## Considerations for 2020 Community Recommendations

17

- ▶ State Budget maintains the same level of implementation funding
- ▶ Air district's must work with existing allocated funds for all selected communities in their jurisdiction
- ▶ CARB staff is proposing to recommend a limited number of communities
  - Add 2 new communities, and
  - Transition 1 monitoring community to an emissions reduction program

## Draft 2020 Community Recommendations- Existing Monitoring Community

18

Richmond- San Pablo

- ▶ Transition to development and implementation of a community emissions reduction program
- ▶ Consistent with CARB Board direction
- ▶ Supported by the air district and the community monitoring steering committee

## Draft 2020 Community Recommendations- New Communities

19

Arvin, Lamont

South Los Angeles

- ▶ Both develop community air monitoring system and community emissions reduction program
- ▶ Consistent with CARB Board direction to prioritize communities that were recommended, but not selected
- ▶ Arvin, Lamont: Recommended by community-based organizations and air district boards in both 2019 and 2020
- ▶ South Los Angeles: Community capacity building supported by CARB Air Grant

## Preliminary Boundaries for 2020 Recommended Communities\*

20

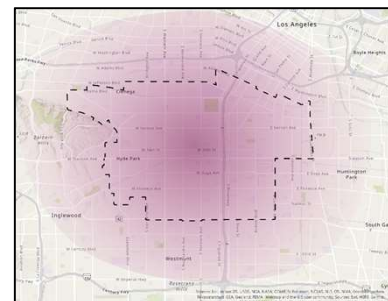
Richmond - San Pablo



Arvin, Lamont



South Los Angeles



\*Draft boundary for preliminary analysis

## Next Steps for 2020 Community Recommendations

21

- ▶ November: Staff Report with CARB staff recommendations released
- ▶ December 10-11: Present recommendations to CARB Board for consideration (Public Hearing)



## Questions / Comments

22

- ▶ For more information, visit the Community Air Protection Program webpage: <https://ww2.arb.ca.gov/capp>
- ▶ Questions or Comments:
  - Email: [communityair@arb.ca.gov](mailto:communityair@arb.ca.gov)  
[airecomunitario@arb.ca.gov](mailto:airecomunitario@arb.ca.gov) (Spanish)
  - Phone: Laura Z. Schmidt: 951-465-7105  
Liliana Nunez: 951-405-4510 (Spanish)

