



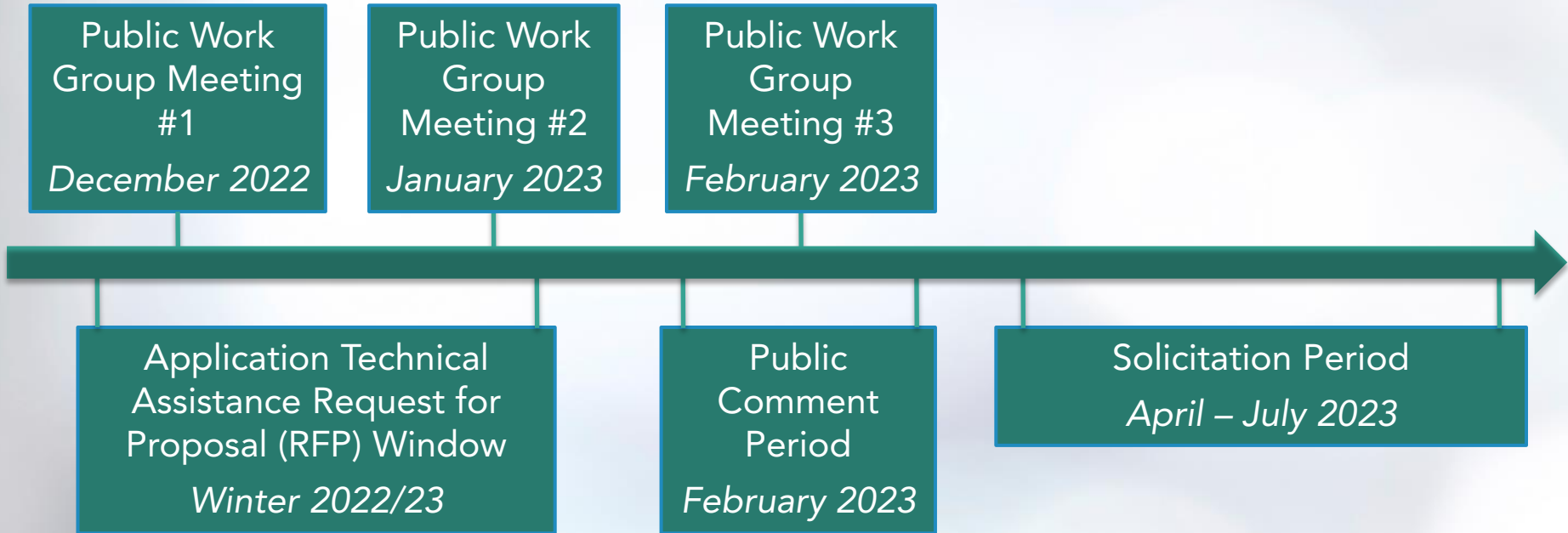
# **Planning and Capacity Building, Clean Mobility in Schools, and the Sustainable Transportation Equity Project**

Public Work Group Meeting #1  
December 12, 2022

# Agenda

Time	Topic*
3:00 pm	Welcome and Introductions
3:05 pm	Agenda, Timeline, and Work Group Schedule
3:15 pm	Background and Past Feedback
3:25 pm	Transportation Equity
3:35 pm	Solicitation Approach and Community-Led Projects Solicitation
4:20 pm	Planning and Capacity Building Administrator Solicitation
4:55 pm	Next Steps
5:00 pm	Adjourn

# Anticipated Timeline



# Upcoming Work Group Meetings

## Work Group Meeting #1

*December 12, 2022*

- Background and past feedback
- Transportation equity
- Solicitation approach
- Community-led project solicitation
- Planning and Capacity Building administrator solicitation

## Work Group Meeting #2

*January 18, 2023*

- Recap of meeting #1
- Scoring criteria
- Funding priorities

## Work Group Meeting #3

*February 14, 2023*

- Recap of meeting #2
- Public comment period
- Example projects

# POLL

In general, what time works best for future public meetings?

(Check all that apply)

- Morning
- Afternoon
- Evening

# POLL

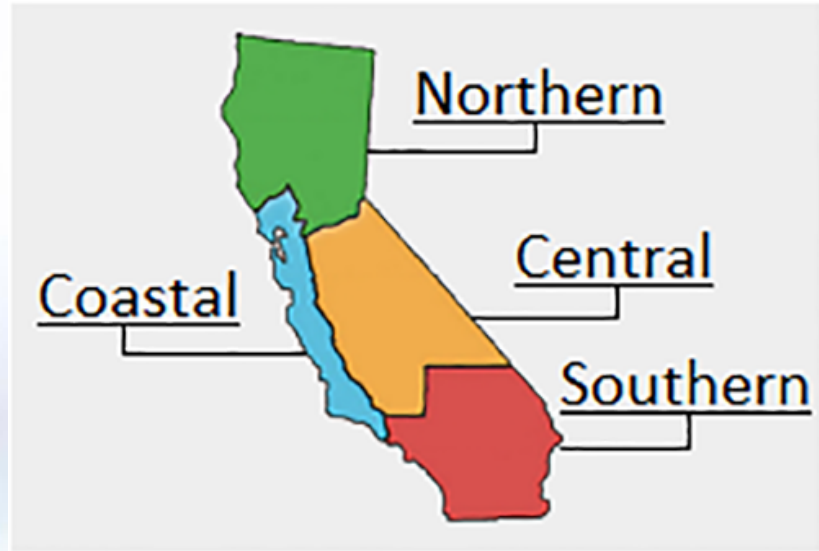
## What type of organization do you represent?

- Community-based organization
- Faith-based organization
- Local or regional government
- Nongovernment or nonprofit organization
- Private mobility provider
- School district or local education agency
- School transportation provider
- Transit agency
- Tribal government
- Other

# POLL

What region of California is your community located in?

- Northern
- Central
- Coastal
- Southern
- Statewide



# POLL

Which grant are you interested in?

(Check all that apply)

- Planning and Capacity Building
- Clean Mobility in Schools (CMIS)
- Sustainable Transportation Equity Project (STEP)
- Not sure yet
- Other



# Background

## Fiscal Year 2022-23



### **\$5M for Planning and Capacity Building**

Community-led Planning and Capacity Building and localized technical assistance and outreach



### **\$15M for Clean Mobility in Schools**

Zero-emission transformations at schools in priority populations



### **\$15M for the Sustainable Transportation Equity Project**

Community-identified clean transportation solutions for priority populations



### **\$20M for Clean Mobility Options**

Expand clean transportation options and community-led shared mobility projects for priority populations and tribal governments

- \$55 million (M) in total for clean mobility investments in fiscal year (FY) 2022-23
- Provide zero-emission and clean mobility options tailored to priority population needs
- Expand transportation choices and reduce vehicle miles traveled
- Invest in low-income and disadvantaged communities, per CalEnviroScreen 4.0

# Other Upcoming Opportunities

## Clean Mobility Options Application Window 2

*Apply for Mobility Project Vouchers  
in March 2023*

## Pre-application Technical Assistance Webinars

*Dec 2022 – Feb 2023*

<http://www.cleanmobilityoptions.org>

## Adult Education & Vocational Schools Zero Emission Vehicle Training Project

*Apply in early 2023*

## Solicitation Development Work Group & Pre-Application Webinar

*Jan 2023*

<https://ww2.arb.ca.gov/our-work/programs/low-carbon-transportation-investments-and-air-quality-improvement-program/low-0>

# Past Approaches

## STEP

- Competitive, single-phase solicitation
  - Technical assistance (TA) provided
- \$44.5 million awarded
  - 8 Planning and Capacity Building grants
  - 5 Implementation grants

## CMIS

- Competitive, single-phase solicitation
- \$34.6 million awarded
  - 4 grants



# Past Feedback

- Significant demand for funding
- Application process and requirements are complex
- Prioritize outreach and investments
- Tailor offerings based on community need
- TA, partnership development, and capacity building are needed
- Financial sustainability is a challenge
- Insurance costs are high
- Implementation delays and increased costs persist

# Comments and Questions



Use the raised hand function (#2 if calling in by phone) or submit your question or comment in the Chat box on Zoom.



Please state your name and affiliation before asking a question or making a comment.

# Transportation Equity

“When a community’s transportation system provides accessible, affordable, environmentally sustainable, reliable, and safe transportation options to all residents, in particular those that have been disproportionately impacted by pollution or lack access to services.

Transportation equity is intrinsically linked to access to economic opportunities and occurs when community residents have the power to make decisions about their transportation systems.”

- From FY 2019-20 STEP solicitation

# Comments and Questions

- Does this align with your definition of transportation equity?
- How would you update this definition?

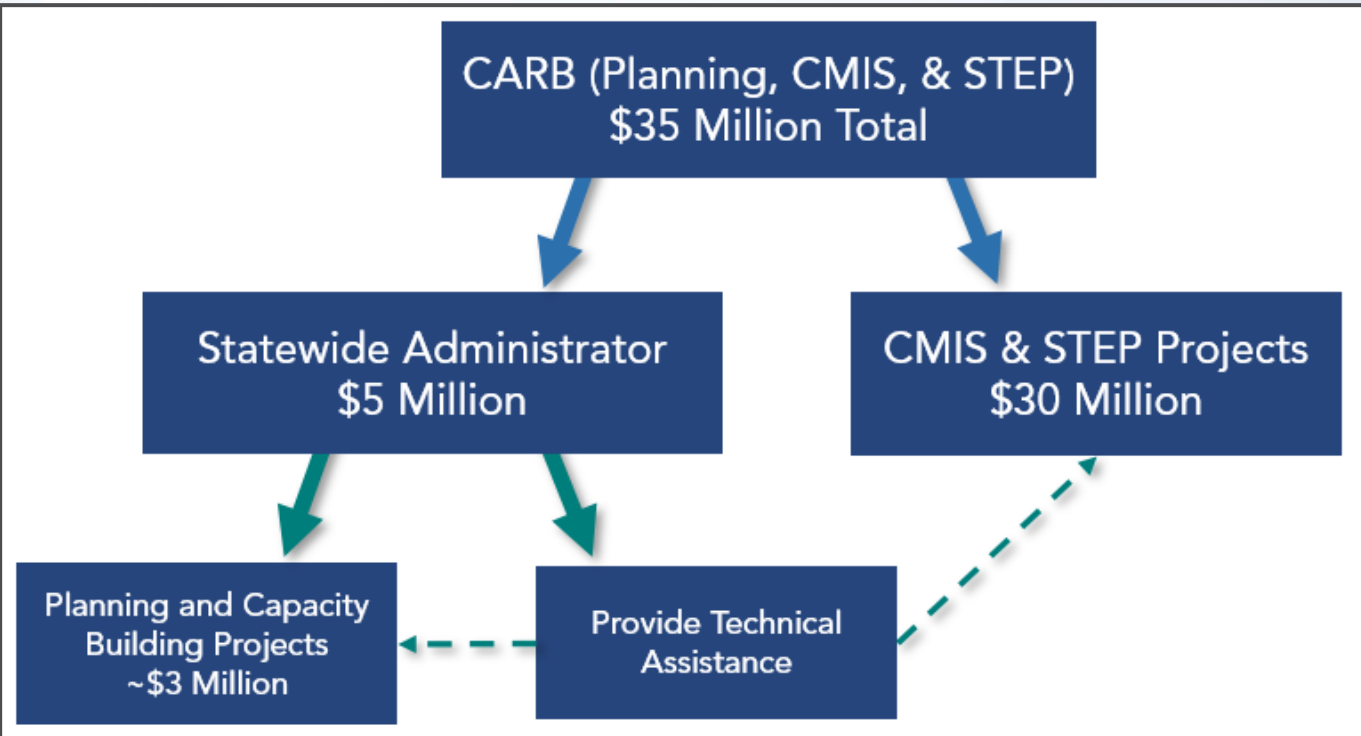


Use the raised hand function (#2 if calling in by phone) or submit your question or comment in the Chat box on Zoom.



Please state your name and affiliation before asking a question or making a comment.

# FY 22-23 Funding Structure





# TWO Solicitations

1

Solicitation for community-based projects (Planning and Capacity Building, CMIS, and STEP)

2

Solicitation for a TA provider and administrator for Planning and Capacity Building grants

# Community-Based Projects

## *Solicitation Approach*

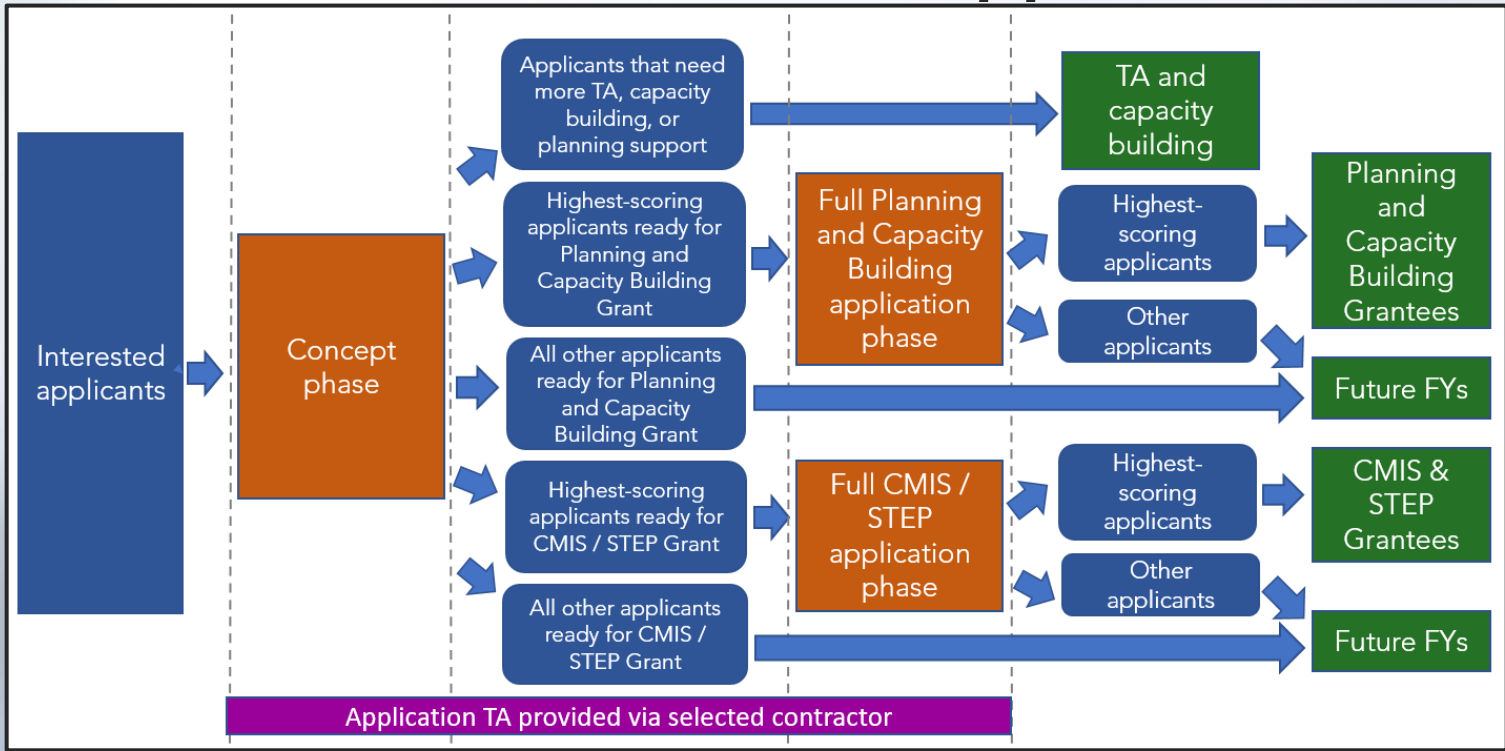
- Combined solicitation for Planning and Capacity Building, CMIS, and STEP
- Purpose:
  - Align requirements and timelines
  - Minimize confusion
  - Encourage coordination and cohesion between Planning and Capacity Building efforts, school communities, and the larger communities
  - Pilot a phased solicitation approach

# Application Technical Assistance

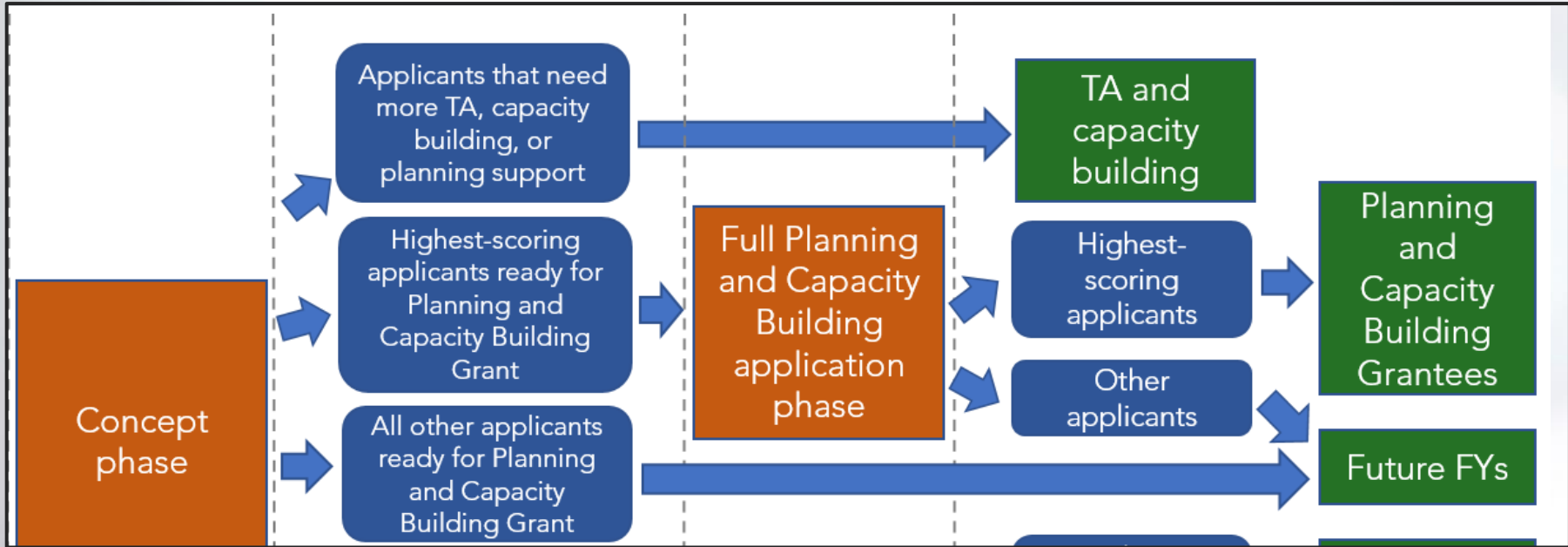
- Provided by third-party for community-based project solicitation
- Winter 2022/23: Request for Proposals to select TA provider
- \$400,000 for 1-year contract
- Scope:
  - Outreach
  - Application support/assistance
  - Evaluation of solicitation process

# Community-Based Projects

## Phased Solicitation Approach

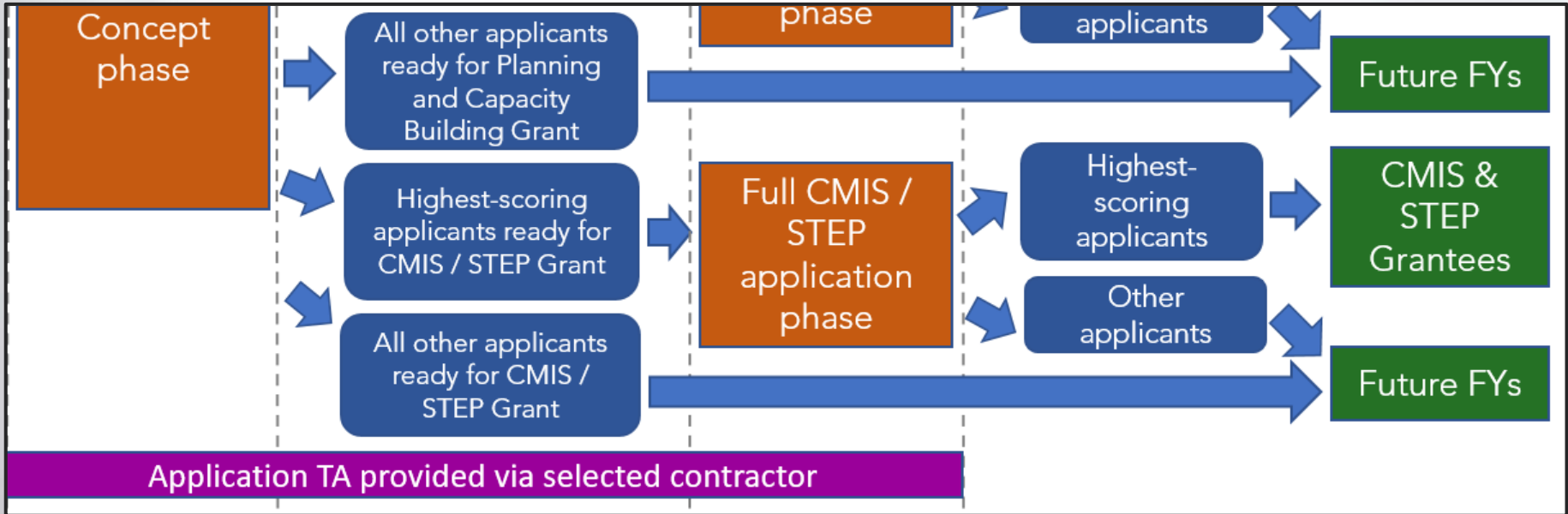


# Community-Based Projects *Phased Solicitation Approach*



# Community-Based Projects

## *Phased Solicitation Approach*



# Comments and Questions

- What are the potential impacts of a joint solicitation approach? Phased solicitation approach?
- Examples of other phased solicitation approaches?



Use the raised hand function (#2 if calling in by phone) or submit your question or comment in the Chat box on Zoom.



Please state your name and affiliation before asking a question or making a comment.

# Phased Solicitation Approach

## *Concept Phase*

1

- Must submit concept to be eligible to move on to full application phase/receive funding
- Could include:
  - Basic project description
  - Applicant and partner qualifications
  - Description of partnership structure
  - Community map and description
  - Estimate of total budget request
  - Description of role of project in furthering transportation equity and connecting to community-identified transportation needs



# Comments and Questions

- What info is relevant to include in a concept phase?
- What info will be challenging to collect for the concept phase?



Use the raised hand function (#2 if calling in by phone) or submit your question or comment in the Chat box on Zoom.



Please state your name and affiliation before asking a question or making a comment.

# Phased Solicitation Approach

## *Unsuccessful Applicants*

1

### Goals:

- Simplify process for unsuccessful applicants to re-apply when funding becomes available
- Quickly select and award additional projects when funding becomes available
- Assess project interest for future FYs

### If more funding becomes available:

- Unsuccessful applicants will be placed on a list for future funding opportunities
- Applications may be evaluated in future FYs

# Comments and Questions

- What are the potential impacts on unsuccessful applicants?
- Examples of solicitations that provided future support to unsuccessful applicants?



Use the raised hand function (#2 if calling in by phone) or submit your question or comment in the Chat box on Zoom.

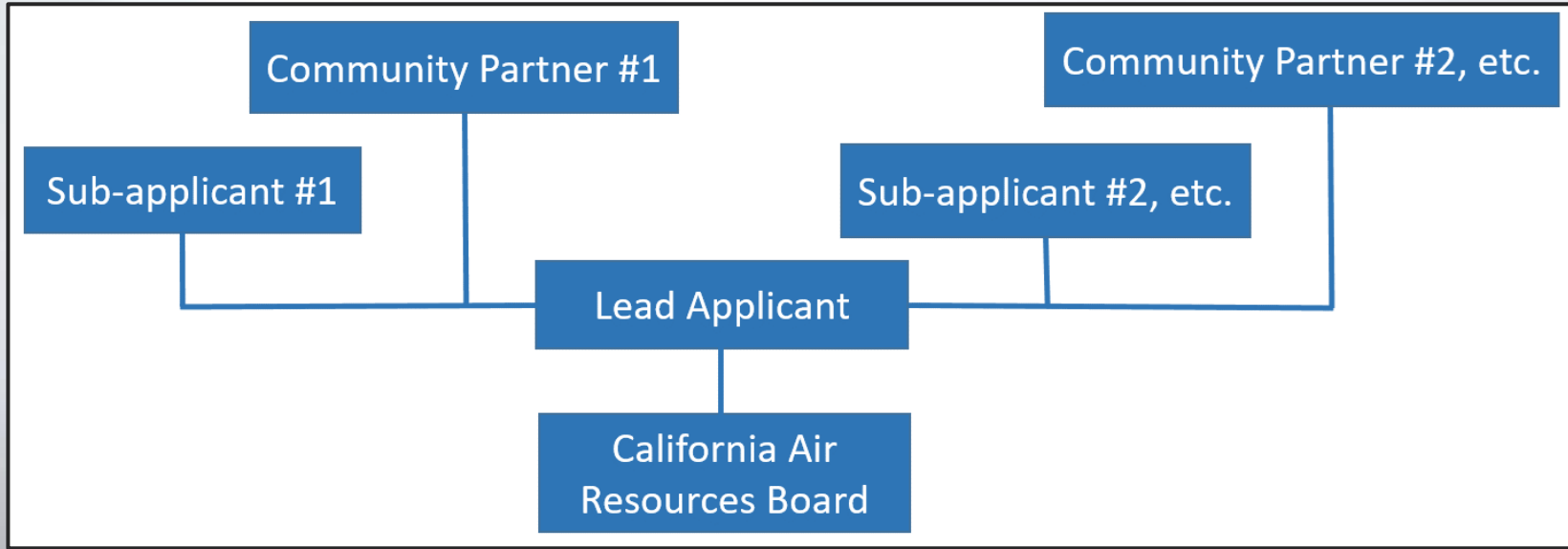


Please state your name and affiliation before asking a question or making a comment.

# Eligible Applicants

- Lead Applicants
  - Community-based organizations
  - Tribes
  - Local governments
  - School districts and local education agencies
- Co-Applicants
  - Public, private, or nonprofit organizations
    - Community-based organizations
    - Faith-based organizations
    - Joint powers authorities
    - Local governments
    - Nonprofit organizations
    - Other public agencies (e.g., Metro Planning Organizations)
  - Philanthropic organizations and foundations
  - Private companies like private mobility providers
  - School districts and local education agencies
  - Transit agencies
  - Tribal governments

# Example Partnership Structure



# Comments and Questions

- What other entities should be eligible?
- What are the ingredients for a successful partnership structure?



Use the raised hand function (#2 if calling in by phone) or submit your question or comment in the Chat box on Zoom.



Please state your name and affiliation before asking a question or making a comment.

# Community-Based Projects

## *Planning and Capacity Building*

1

Projects are intended to increase transportation equity by:

- Improving local understanding of residents' transportation needs
- Preparing communities to implement clean transportation and land use projects
- Developing a foundation for organizational and community capacity building



# Community-Based Projects

## *CMIS and STEP*

Projects are intended to increase transportation equity by:

- Addressing community-identified needs
- Increasing access to key destinations

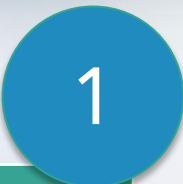
CMIS focus: Support public school districts

STEP focus: Reduce vehicle miles traveled





# Eligible Community-Based Projects



<b>Eligible Project Categories</b> <i>See Handout for More Details</i>	<b>Planning &amp; Capacity Building</b>	<b>CMIS</b>	<b>STEP</b>
Community Engagement and Capacity Building	✓	✓	✓
Clean Transportation, Equity, and Land Use Plans	✓	✓	✓
Workforce Training and Development	✓	✓	✓
Active Transportation		✓	✓
Fixed-Route Transit (including School Buses)		✓	✓
Shared Mobility		✓	✓
Supporting Projects (e.g., infrastructure)		✓	✓
School District Vehicles and Equipment		✓	

# POLL

1

How much should each Planning and Capacity Building grant be?

- Up to \$200,000
- Up to \$500,000
- Up to \$750,000
- No funding limits
- Other

# Comments and Questions

- What other project types should be eligible?
- What elements are needed for successful and equitable clean transportation or planning projects?



Use the raised hand function (#2 if calling in by phone) or submit your question or comment in the Chat box on Zoom.



Please state your name and affiliation before asking a question or making a comment.

# Planning and Capacity Building

## *Administrator Solicitation*

2

- \$5 Million Solicitation
- General Roles
  - Administer Planning and Capacity Building projects
  - Provide customized TA to Planning and Capacity Building, CMIS, and STEP funding recipients
  - Provide targeted support to other organizations in preparation for future funding cycles

# POLL

2

In the Administrator Solicitation, how much of the \$5 million should go toward Administration and TA versus community-based projects?

- \$2 million to Administration and TA
- \$3 million to Administration and TA
- Other

# Planning and Capacity Building

2

## *Administrator Solicitation*

- Eligible Applicants (California-based)
  - Nonprofit organizations
  - Tribal organizations or governments
  - Public entities
- Technical Knowledge and Qualifications
  - Mission rooted in transportation equity
  - Transportation and sustainable community planning and design
  - Meaningful public involvement in transportation decision-making processes and project delivery

# POLL

2

What other types of entities should be eligible to provide TA and Administer the Planning and Capacity Building projects?

- Institutions of higher education
- Consulting firms
- Philanthropic organizations
- Other

# Planning and Capacity Building

## *Types of Implementation TA*

### Capacity Building

- Organization needs assessment
- Strategic planning
- Relationship building
- Grant writing

### Grant Management

- Administrative
- Plan development
- Budgeting
- Track progress
- Meeting facilitation
- Permitting/Site Planning

### Evaluation and Impact Assessment

- Data collection
- Data analysis
- Identify metrics for success

### Equity Support

- Equitable community engagement
- Participatory budgeting



# POLL

2

What types of implementation TA do you think are most critical?

- Capacity building
- Grant management
- Evaluation and impact assessments
- Equity support
- Other

# Planning and Capacity Building

## *Regional TA Teams*

2

- Opportunities
  - Deliver local, place-based support and project guidance
  - Regional project coordination
  - Leverage collaboratives funded through other local, State, and federal efforts

# Comments and Questions

- What will it take to implement this approach?
- What features would make this approach most successful?



Use the raised hand function (#2 if calling in by phone) or submit your question or comment in the Chat box on Zoom.



Please state your name and affiliation before asking a question or making a comment.

# Thank you!

## Next Steps:

- **Survey** – *Send us additional feedback*
- **Meeting Recording and Notes** – *Posted by December 26*
- **Next Work Group Meeting** – *January 18, 2023*
- **TA RFP** – *Out Winter 2022/23*

## Contact Us:

- **Bree Swenson** – [STEP](mailto:Breanna.swenson@arb.ca.gov) and TA RFP, [Breanna.swenson@arb.ca.gov](mailto:Breanna.swenson@arb.ca.gov) OR [step@arb.ca.gov](mailto:step@arb.ca.gov)
- **Violet Martin** – Planning and Capacity Building, [Violet.martin@arb.ca.gov](mailto:Violet.martin@arb.ca.gov)
- **Heather Choi** – [CMIS](mailto:Heather.choi@arb.ca.gov), [Heather.choi@arb.ca.gov](mailto:Heather.choi@arb.ca.gov)
- **Subscribe** – [Clean and Sustainable Mobility Options](#)